

# ASLTA

## American Sign Language Teachers Association

Newsletter

Vol. 3 No. 2 • Late Fall 1996

### EDITOR'S NOTE

from Geoff Poor

We are now heading into the second year of the ASLTA newsletter's new life. As the editor, I would like to extend my great appreciation to the officers of ASLTA for their articles, all the chapters that have contributed news of their activities, and all the people that have sent me feedback on the newsletter. Also, we all owe a great deal to the NAD home office for their cooperation and support, and especially to Nancy Creighton, who takes care of the layout and publishing. I collect and summarize the information, but it is Nancy who makes it all look so readable and professional and sees that it gets out on time. Thanks, Nancy! *[Thanks, I enjoy it. I try to get it out on time. Sorry this one is late! — Nancy C.]*

Also, if you have access to the World Wide Web, check out the ASLTA home page. As Lynn mentions in her report, it has some important ASLTA documents that you can download for your reference. I am planning to add certification information and forms, and more links to related sites. If you have any ideas for what you would like to see on the website, please let me know.

And, of course, we all wish all of you a wonderful holiday time and a fantastic 1997. Let's keep this great momentum rolling!

### FROM PRESIDENT

E. LYNN JACOBOWITZ

#### Homefront

I finally got to work at the office at the NAD HQ and I have been cleaning out the boxes from the days of the old Communicative Skills Program (1967) through the Sign Instructors Guidance Network to ASLTA (1996). Thirty years of boxes sitting in the closets of the NAD HQ are now in my office waiting to be filed, preserved, and scanned. There were old filmstrips, faded transparencies and antiquated 16mm films. It was fascinating to go through them. I felt like I was in a time machine going back to 1960s and finding out what happened to energetic people like T.J. O'Rourke, Mel Carter, and all the past presidents of SIGN-ASLTA. With great pleasure I inform you that Patricia Beech, our '96 NAD-ASLTA program book Historian, is willing to take on this endeavor. Hats off to Patricia again! Perhaps, in the '98 NAD-ASLTA program book, Patricia will give a summary of achievements and pitfalls of CSP-SIGN-ASLTA.

Another pet project I would like to see accomplished is to have a local person (preferably ASLTA member) work on packets to include state legislation that recognizes ASL and/or ASLTA certifications, a recommended reading list of ASL/Deaf Studies, and other fact sheets about ASLTA. This requires organization and updating skills. If you are interested in this project, please call, write, or E-mail me.

The chart on special interest groups was inadvertently deleted in the previous issue and now is being inserted (see page 14). If you are interested in joining or forming the SIG, please call or write me. You need to be an ASLTA member, certified or uncertified, to form this SIG. The benefits vary in each SIG. Some will receive stipends for transportation, room and board. Others will be paid to attend certain con-

#### Submission Deadline

*(get your news to me by this date)*

January 10

March 10

September 10

November 10

#### Publication Date

*(it will be in this issue)*

February 15

April 15

October 15

December 15

Newsletter Editor, Geoff Poor • Center for Sign Language and Interpreting  
Education • NTID/RIT • 52 Lomb Memorial Drive • Rochester, NY  
14623-5604 • (716) 475-6282 V/TTY • (716) 475-6500 FAX •

gspncm@rit.edu

continued on page 2

## **President's Report**

continued from page 1

ferences or organization meetings. Others will be paid for attending the NAD-ASLTA conferences to submit their report and findings. The SIGs are an integral part of ASLTA, meaning that you are making decisions for future generations of deaf people and the ASLTA will be assisting you all the way! ASLTA board members are overwhelmed with many ideas and requests. We depend on you members to make them happen and we will give you credit and/or money for your work. We are a growing organization, which is a wonderful process. Please consider helping to strengthen ASLTA with your ambition, knowledge and skills.

As the President of ASLTA, I must say I am proud of the accomplishments of ASLTA since 1995. It wasn't just me that made those things possible. It was you, the members, who made it all happen. I want to thank you for your ongoing support and enthusiasm in keeping ASLTA alive and kicking. The accomplishments are listed elsewhere in the newsletter. This job as the President of ASLTA has given me a wonderful opportunity for personal and professional growth. I hope to continue this for many more years. Have a great and healthy 1997.

## **President's Report**

The ASLTA Board members agreed to co-sponsor both '97 Deaf Studies V and '98 3rd National ASL Literature Conference. More details about our involvement in these conference will be forthcoming in the next issue. We hope you all will attend both conferences as both will provide a variety of workshops, presentations, teleconferences, and entertainment. This is your chance to professionalize your career and to start and maintain your status in the ASLTA certification system. Many exciting things are happening in this evaluation and certification system. There will be more opportunities for ASLTA professionally certified and experienced members to work on a new certification system for ASL K-12 teachers. ASLTA board consists of 5 stalwart volunteers, overworked and underpaid, but much appreciated. Won't you consider helping them out? We cannot walk alone. We need you. Get yourself certified. Get yourself involved!

My involvement in the ASL Specialist and Teaching Standards Committee has enriched my understanding of the importance of having certified teachers. Certified teachers are now in great demand nationwide in the search for better quality instruction. The State Department of Education in Oregon is considering the recommendations made by Laurene Gallimore and her Oregon committee. Oregon will

be the second state that requires ASLTA certification as one of the requirements for ASL K-12 and college/university teachers. I foresee that more states will follow suit. The chapters of ASLTA should get together and work on state legislation to protect and prescribe ASLTA certification for ASL teachers in each state.

We have a HUGE responsibility to protect, preserve and perpetuate ASL and Deaf Culture. How are we going to do it? We need to put teeth in our legislation by requiring ASLTA certification for all ASL teachers in K-12, colleges and universities, so that our language will not be slighted by those well-meaning but incompetent teachers who claim to be proficient in ASL after taking only a couple of basic ASL classes. Can you imagine a high school student taking a couple of biology courses and becoming a doctor! It's insulting to our profession. We, the ASLTA Board members, beg you all to become certified and maintain the integrity of the profession.

It is our pride that we are ASLTA certified professionals who are protective of our ASL heritage and Deaf Culture. The more ASLTA certified teachers we have, the more powerful our language and culture will become! There is a great need to preserve and perpetuate this language and culture for the generations of deaf citizens yet to come. We should revisit Martha's Vineyard. We need to teach our hearing counterparts the proper use of ASL. We need to instill our Deaf Culture norms so we all can live in harmony and peace.

Right now, I'm seeing the proliferation of poor signing skills, contact signs, artificially represented sign systems such as Signing Exact English, Morphological Sign System, and some unknown alien systems among deaf and hearing people. It's amazing how ASL became suppressed again, not only by oralism or Cued Speech, but also by artificial sign systems. They all were invented by hearing and late-deafened adults. ASL will survive this oppression again. How do we go about it? We ASL users should be certified so that we perpetuate the art and science of ASL for centuries to come. ASLTA Board members request that not only ASL teachers join and be certified, but Deaf Studies teachers, ASL-English Bilingual teachers, Teachers of the Deaf, Parents of the Deaf, Friends of ASL Users, and anyone should join ASLTA to help us perpetuate, preserve and protect our ASL heritage and Deaf Culture.

## **Duties of Sign Language Teachers**

In my keynote speech in California during the first CA-ASLTA conference, I highlighted a few things I'd like to share here as well.

I have developed a list of duties that a sign language teacher should be competent in, including:

- show our respect to the language and its culture.
- display proper ASL/Deaf Studies knowledge, skills and attitudes.
- abide by ethics as ASL instructors; those with little or no knowledge, proper skills, and wrong attitudes towards ASL can hurt the Deaf Community.
- maintain the ASL evaluation and certification system to properly issue certifications to ASL teachers to promote quality of instruction and our professionalism in maintaining our attitudes, knowledge, and skills.
- assure public schools, colleges, and universities that there are qualified and certified ASL teachers ready to teach, not a novice from ASL 1 and 2 classes.

In closing the keynote speech, I added the future goals of ASLTA (see page five). I hope to see this happen and I hope that you also, will give your full support and services to the future goals of ASLTA.

### **ASLTA on the Web**

The ASLTA Board members wish to thank Geoff Poor, Editor of our newsletter and WorldWideWeb (WWW) page, for launching a fine website. Type <http://www.nad.org>, click on the ASLTA box; and you will see the following items: logo, guidelines for chapter affiliation, bylaws, list of chapters and links to chapter presidents who have E-mail addresses, list of board members and links to their E-mail addresses, too. There will be more upcoming events and news on our homepage. It looks so high tech and lively! If you have any more ideas, please call or email Geoff Poor.

### **Deaf Studies V Conference**

There will be an exciting and well-attended Deaf Studies V at Gallaudet University Kellogg Conference Center on April 17 - 21, 1997. Part of this meeting will be the hosting of a teleconference event on April 18 from 1-3 pm EST. The Gallaudet University Pre-College National Mission Programs, College for Continuing Education, and Department of TV, Photography, and Educational Technology are sponsoring this teleconference, "Telling Tales in ASL: From Literature to Literacy" with a focus on deaf and hard of hearing children and youth. Ben Bahan, Bob Daniels, Jane Kelleher Fernandes, and E. Lynn Jacobowitz will design and navigate this educational journey. They will perform selections and provide practical tips for using ASL literature in the classroom. If you are interested in downlinking or hosting the teleconference, please contact them for more information at the fol-

lowing numbers: 202-651-6060 TTY/Voice; 202-651-6074 FAX; [teleconf@gallua.gallaudet.edu](mailto:teleconf@gallua.gallaudet.edu) Email. As the ASLTA President, I'm excited to be on air and reach out to all of you. I hope you will participate in this new innovative and wonderful teleconference.

### **Transfer Credits Allowed**

The ASL Studies portion of the Department of ASL, Linguistics, and Interpretation at Gallaudet agreed that we can allow transfers for sign language students from other programs, provided that they can show they were taught by ASLTA-certified teachers at their respective institutions. I am proud to see this as a part of enforcement in better quality of instruction. Also, the department is looking for an ASL teacher, a faculty position that requires ASLTA professional certification (or must be obtained within 3 years). Send your letter of interest and resume to the department. See the advertisement elsewhere for more details. Almost all of the NTID faculty members of the Department of Communication, Sign Language, and Interpreting Education are ASLTA certified. More institutions are following suit. As soon as there are more than 4 or 5 sites of fully ASLTA certified professors in ASL/Deaf Studies programs, then there will be a need to set up a formal Special Interest Group called the Accreditation and Standardization Committee. Its function is outlined elsewhere in this newsletter.



## **ASL SPECIALISTS AND TEACHING STANDARDS COMMITTEE REPORT**

*by E. Lynn Jacobowitz*

On Thursday, October 10, 1996 the committee met in CSUN (California State University, Northridge) to discuss the standards for ASL teachers of K-12. The committee members, Dr. Larry Fleischer, Steve Nover, Laurene Gallimore, Jay Innes and I, discussed the qualifications and requirements of ASL teachers based on the ACTFL's recommendations. Mel Carter was invited to this meeting as a language consultant. Genie Gertz and Flavia Fleischer were also invited to be a part of the meeting.

There is no university that meets the ACTFL's qualifications and recommendations at this point. However, Laurene

## ***ASL Specialists and Teaching Standards***

continued from page 3

Gallimore, a representative of the Confederation in Oregon for Language Teaching (COFLT) and other committee representatives developed a Proficiency-Based Admission Standards System (PASS) Project to enable the State of Oregon Department of Education to adopt its recommendations and requirements for ASL teachers to be certified and licensed to teach ASL in K-12. There was a testimony made by Fred Farior and Laurene Gallimore on Sept. 19, 1996 to the Teachers Standards and Practices Commission. Their recommended requirements included ASLTA certification, standards, plus a minimum 6 hours of training/workshops per year. There were other recommendations and their goal is to implement them in 1997!

Western Oregon State College may be the first to offer an accredited ASL Teacher Education program in compliance with ASLTA and COFLT standards. This committee developed ASL first and second language acquisition K-12 curricula, which might be the first of its kind in the nation. As soon as the Oregon Department of Education approves the curriculum, the ASLTA board will consider supporting this committee in developing and expanding a standard curriculum for K-12 ASL teachers.

Laurene gave us an article from *The Penn Stater*, July/August 1995, stating that in Prince Georges County, Maryland, there was a study by Marilyn Daniels, Assistant Professor of Speech Communication at the Penn State Worthington Scranton Campus. The study indicated that "For children, sign language might be a more natural communication code than merely spoken English." Also, she found an extra benefit for deaf and hearing children who learn ASL at an early age; they score much better on vocabulary and language tests than their peers. Based on the Peabody Picture Vocabulary Test, the students who used ASL scored fifteen points higher than those who did not. Daniels remarked that using ASL encourages shy children to increase their language-acquisition skills in a relatively pressure-free environment. "It's difficult for some children to speak well," she says, "but with ASL, the children are on more of an even playing field and don't feel inhibited." Daniels believes that brain stimulation explains some of this dichotomy. "You intake signs with your eyes, using the right side of the brain. Then, like any other language, ASL is processed and stored in the left hemisphere. Studies show that the brain needs to be used to develop." But whatever the reason behind ASL's success, Daniels says, "These scores are a powerful indicator of the value of sign instruction for preschool children." This indicates a great need for further research on whether ASL

instruction should be required for both deaf and hearing children in K-12.

This is definitely an exciting and productive field of study for ASL teachers. The committee decided to pursue further study on ASL teachers in K-12, colleges and universities to see what they have done in their programs. Jay Innes will make a survey and send out it to people who are currently in charge of ASL programs, K-12 ASL instruction, ASL/Deaf Studies departments, and other similar positions. If you wish to receive the survey, please identify yourself and your current position to Jay Innes. This survey will enable us to establish a recommended set of standards for board of education in each state to adopt a new ASLTA's ASL K-12 certification system. This will create a new team of evaluators within ASLTA for this type of certification system. It also means new training and procedures for us to develop. There is so much more to do for this new committee. We all are looking forward to better ways to preserve and protect our language and culture.

On Friday, October 11, 1996 the committee met again in CSUN to discuss establishing an ASL Academy within the NAD. Also, we discussed the differences between ASL Teacher, ASL Pathologist, ASL Teacher Assistant, and ASL Specialist. We developed a draft job description for each position. This will need to be further investigated by the committee with your input and, if possible, your job descriptions. However, the committee members agreed that the Teacher and Specialist must possess at least a BA or MA. The ASL Teacher should be skilled and knowledgeable about ASL, Deaf Culture, ASL Linguistics, ASL Literature, and Deaf Studies. The Specialist should be skilled and knowledgeable about ASL, Deaf Studies, ASL Linguistics, ASL Assessment/Evaluation, and ASL Program Coordination/Administration. The ASL Pathologist must possess at least MA or Ph.D. in ASL Linguistics, Neurolinguistics, Pathology, or Diagnosis/Prescriptive strategies. The ASL Teacher Assistant should possess at least a BA degree and be proficient in ASL, Storytelling, Linguistics and Deaf Studies.

Steve Nover explained that his work with Dr. Kathee Christensen and the American Speech Language Hearing Association (ASLHA) will be completed after the conference in San Francisco in November. Steve and Kathee are working on getting grants to develop ASL Specialists' evaluation techniques and tools. Also, Steve Nover discussed the history of Language Planning since 1858. The Council of American Instructors of the Deaf started a language philosophy at

continued on page 6

The two items below were part of E. Lynn Jacobowitz's speech at the CA-ASLTA meeting mentioned on page three. These items list the past work and future plans of ASLTA.

---

## ASLTA'S BOARD ACTIVITIES AND HIGHLIGHTS OF JANUARY 1995 - DECEMBER 1996

- \* Increased NAD-ASLTA membership
- \* Increased number of chapters
- \* Disseminated quarterly newsletters
- \* Had two ASLTA Liaisons
- \* Sent out holiday calendar cards
- \* Created first NAD-ASLTA program book for Portland, Oregon convention
- \* Designed and supervised NAD-ASLTA Booth (Colleen Pouliot)
- \* Ordered novelties: a canvas bag with ASLTA and NAD logo, lapel pins, notebook, pen and paper with ASLTA imprints
- \* Established an ASLTA homepage WWW "NAD.ORG"
- \* Acquired an office at the NAD HQ
- \* Ordered a computer package with two file cabinets for the office
- \* Had two ASLTA representatives in NAD's Education Committee on ASL Specialists and Teaching Standards (E. Lynn Jacobowitz and Steve Nover)
- \* Represented ASLTA in RID Convention (Isabelle Calvacca)
- \* Represented ASLTA in NAD Convention (Alec Naiman)
- \* Raised funds for the program book and ASLTA reception
- \* Joined the National Council for Languages and International Studies (NCLIS) and the Joint National Council on Languages (JNCL)
- \* Implemented a revised evaluation and certification system (Bill Newell)
- \* Endorsed Indiana to require ASL teachers to have ASLTA certification and/or four year ASL degree
- \* Sponsored Deaf Studies V and 3rd ASL Literature conferences
- \* Implemented History Archives (Patricia Beech)
- \* Endorsed Oregon to require ASL to have ASLTA certification or number of courses taken in ASL

## ASLTA ODYSSEY 2001

- ASLTA evaluation and certification system will be adopted and mandated by all 50 states
- ASLTA's SIGs will establish new evaluation and certification systems for their specialties
- Regional and national conferences will occur
- ASLTA's Accreditation Team will travel and approve ASL programs
- ASLTA's LPI raters will become school's appointed Sign Language evaluators
- ASLTA's directory of ASL professionals will be published and disseminated to education settings, ASL and interpreting programs
- ASLTA will establish a clearinghouse of materials, recommended reading lists and videotapes
- ASL students will need to take courses under ASLTA certified teachers
- ASLTA will host the first International Sign Language/Deaf Studies Teachers Conference

As you can see, there are many new possibilities for each of you to contribute to the success of ASLTA. If you are interested in contributing, let me know. We are swamped with many requests and services. We hope 1997 and on you all will make ASLTA a strong and productive organization.

On the behalf of ASLTA board members, we all wish you a happy holiday and healthy new year. Watch for our little gift, '97 Z-folded calendar card, in the mail soon. Thank you for your continuing support of ASLTA.

## ***ASL Specialists and Teaching Standards***

continued from page 4

schools for the deaf. In 1962, the DC Association of the Deaf established sign language classes. In 1967, the Communicative Skills Program (CSP) of NAD got a full-fledged grant from Rehabilitation Services Administration to set up a nation-wide ASL classes. The CSP, with the collaboration of the Sign Instructors Guidance Network (SIGN), hosted the National Symposium on Sign Language Research and Teaching (NSSLRT) in 1977, 1978 and 1980. Then T.J. O'Rourke, with the collaboration of his publishing company, TJ Press, hosted the first American Sign Language Research and Teaching Conference in 1986. Then the SIGN-ASLTA became active in ASL conferences during NAD conventions.

Nover indicated the importance of an ASL Academy: NAD's responsibility to seek the best language/communication mode for deaf children. This discussion led to the idea of establishing a formal language planning committee under the auspices of the ASL Academy. Nover explained the structure of the Language Planning Committee. The Language Planning Committee works with two major planning groups: the Status Planning and the Corpus Planning. The Status Planning Committee focuses on the acceptance of ASL as a language on the State and Board of Education levels. The Corpus Planning Committee develops or collects a list of ASL books, materials, videotapes and other resources. There will be another committee for evaluators. The Evaluator Committee will focus on the success of both the Status and Corpus Planning committees. Then the community will give its input to the Language Planning Committee if all works out in the best interests of deaf children in schools. The implementation of both the Status and Corpus Planning committees will be initiated by NAD HQ. There will be experts serving on all committees. It will happen in a year or two.

The committee agreed that there is a great need for at least a one million dollar endowment to implement these committees within the language planning agency. The committee members developed three phases to make this possible; Phase I is to raise funds, establish organizational structure of the language planning agency, create vision, goals and objectives, and start the talent search. Phase II is to plan the language planning agency within the NAD. The Phase III is to implement the language planning committees. The committee members will seek grants to fit the goals of the committee. If you are interested in serving on the committee, please inform Jay Innes or any of the committee members.

The committee members will meet again one day before Deaf Studies V in Washington, D.C. in April, 1997. The

agenda will focus on the results of the survey on K-12 ASL qualifications for ASLTA certification, the organizational structure and appropriate personnel of the ASL Academy within the NAD, and the recommended standards for the ASL Specialists.

This committee is open to anyone who is interested in attending and listening to the progress we have made.



## **FROM THE VICE PRESIDENT**

*By Keith Cagle*

The ASLTA conference at the NAD Convention in July 1996 was very successful with a large number of workshops, audiences, a new ASLTA booth, more awards, and a reception with the keynote speaker, Mel Carter, and more.

At the ASLTA general meeting, I shared my report with ASLTA members about the ASLTA Presenters Bureau (formerly named Speakers Bureau) and ASLTA-recommended Professional Development Topics. There were only 15 applications accepted for the ASLTA Presenters Bureau. We agreed to extend the application deadline to February 1, 1997. The application form is enclosed with this ASLTA newsletter, see page 7. The list of recommended professional development topics also is printed in this newsletter, see page 8. Their categories parallel the categories of knowledges/skills identified in our ASLTA evaluation system. If you have any suggested topics for future listings, please do send them to me. Have another productive year teaching and learning ASL!

## **FROM THE CHAPTER AFFILIATION CHAIR**

*by Leslie C. Greer*

### **Spotlight on Kansas, K-ASLTA**

*by Sherry Gabel*

Last May, we had our annual fund-raising event, "ASL Clinic" with five stations each for Levels 1 and 2 in Topeka, Kansas. They rotated every 20 minutes, including a break, and concluded with a Deaf panel for questions and answers. The chairpersons were Mr. and Mrs. Bill Fansler. As usual, it was successful.

continued on page 9

# ASLTA PRESENTERS BUREAU

This is for ASLTA members (both certified and non-certified) who give training, presentations and/or workshops such as:

- ASL/Deaf Studies
- ASL/Deaf Studies Curriculum and Syllabus Development
- ASL/Deaf Studies Evaluation
- ASL/Deaf Studies Pedagogy/Instructional Systems
- ASL/Deaf History, Culture and Community
- ASL Linguistics
- ASL/Deaf Studies Materials and Resources

If your application is approved, your name, address & phone number(s) that you want published, and your topics with abstracts, will be published in our new ASLTA Presenters Bureau Annual Directory.

**The extended deadline is February 1, 1997**

Name: \_\_\_\_\_

Address: \_\_\_\_\_

Phone #: \_\_\_\_\_ TTY/Voice (Work) \_\_\_\_\_ TTY/Voice (Home) \_\_\_\_\_  
FAX (Work) \_\_\_\_\_ FAX (Home) \_\_\_\_\_  
Answering Machine - W / H (please circle)

E-mail Address: \_\_\_\_\_

Are you a member of National ASLTA? YES NO

Do you have ASLTA certification? YES NO

If yes, what level? \_\_\_\_\_ Provisional  
\_\_\_\_\_ Qualified  
\_\_\_\_\_ Professional

What topics are you giving for the workshop/training for ASL teachers?

**Please attach an abstract/description for EACH topic. No topic will be included without abstract/description.**

*To be included in the abstract for each topic:*

- Title of workshop/training
- Abstract/Description of workshop/training (approx. 50 words)
- Target Audiences (e.g., ASL teachers, interpreters, researchers, teachers of the deaf / hard of hearing, interpreter trainers)
- Length of workshop/training
- Media needs (e.g., overhead projector, videotape recorder, blackboard, slide projector, etc.)
- Listing of previous presentations for which organization, locations and dates.
- A black and white picture of yourself up close (optional).

**Mail the application form to:**

Mr. Keith M. Cagle, ASLTA Vice-President  
Gardner-Webb University  
Campus Box 283  
Boiling Springs, North Carolina 28017

The directory will be distributed to ASLTA members and interested persons/programs. NAD and ASLTA will not take responsibility for speakers' or agencies' arrangements. This directory will be used as a human resource development book for ASL/Deaf Studies teachers, ASL/Deaf Studies program coordinators, school/college/university administrators, state association presidents, interpreting program coordinators and the like.

# PROFESSIONAL DEVELOPMENT, Endorsed By National ASLTA 1996

## **I CATEGORIES as identified in the ASLTA Evaluation**

- Second Language Teaching
- Linguistic Knowledge
- Teaching Methodology
- Evaluation and Class Placement
- Curriculum Development
- Culture: Information and Behaviors
- Issues related to Teaching ASL / Language / Culture
- Selection of Resources and Materials
- The Profession of ASL Teaching
- Class Management

## **II Specific Topics Related to ASL and Deaf Studies**

- Activities for ASL Class
- ASL Assessment Tools and Techniques
- ASL Classifier System
- ASL Counting Number Systems
- ASL Curriculum Development
- ASL / Deaf Humors
- ASL Discourse
- ASL Evaluation for Students
- ASL Literature
- ASL Morphology
- ASL Non-manual Signals/Markers
- ASL Object-Subject-Verb
- ASL Phonology
- ASL Poetry
- ASL Pronominalization
- ASL Plurality
- ASL Storytelling
- ASL Structure
- ASL Syntax
- ASL Locatives
- ASL Teaching for Adults (Androgogy)
- ASL Teaching for K-12
- ASL Teaching Methodology
- ASL Relative Time
- ASL Semantics
- ASL Verb Agreement
- Deaf and Hearing Cultures
- Deaf Literature
- Developing Syllabus for an ASL course
- French Sign Language
- Geographical Considerations in the Use of ASL in the U.S.

- History, Development and Acceptance of ASL as a Language
- History of Deaf People
- International Sign Language
- Introducing ASL Vocabulary
- Issues in Deaf Studies
- Issues Related to Teaching ASL / Language / Culture
- Lesson Plan of ASL Class
- Linguistics of ASL
- Methods of Teaching ASL
- Selection of Resources and Materials for ASL Class
- Sociolinguistics of ASL
- Teaching Deaf Culture
- Teaching Fingerspelling
- Teaching ASL Grammars
- The Profession of ASL Teaching
- Visual Gestural Communication

## **III General Topics Related to Language, Culture and Teaching Studies:**

- Acquisition and Learning
- Class Management
- Creolization
- Culture: Information and Behaviors
- Curriculum Development
- Educational Foundations
- Educational Media
- Evaluation and Testing
- Introduction to Anthropology and Culture
- Introduction to Applied Linguistics
- Introduction to Psychology
- Introduction to Sociology
- Instructional Design / Development
- Language Contact
- Language Development
- Lesson Planning
- Linguistics
- Pedagogy vs Androgogy
- Professionalism and Professionalization
- Second Language Teaching and Learning
- Sociology of Community
- Teaching Methodology
- Variations in Language



## Chapter News

continued from page 6

Last June, Nancy Eades, ASL/ESL Coordinator at KSD provided us a workshop on "ASL Grammar Structure."

Last November 5, Dr. Richard Lytle gave us a dinner/workshop on "The Social & Emotional Development of Students" for sign language instructors and interpreters.

In December, "ASL Diagnostic Assessment" will be offered for K-ASLTA members by a trained team.

Kansas ASLTA's current address:

Sherry Gabel, President

412 E. Sheridan Bridge Lane

Olathe, Kansas 66062

[913] 782-1715 TTY

[913] 791-0518 FAX

Twila Clark, Vice President

Theresa Hicks, Secretary/Treasurer

## Chapter News From The Convention

By Leslie Greer

On July 3rd, the affiliated chapters, "in process" chapters and I had a chapters meeting at the NAD/ASLTA Convention in Portland, Oregon.

We introduced each other at the beginning of the meeting. There were about 20 people. We had the chapters meeting for these reasons: to open lines of communication; to share information, such as professional development; for feedback; and to update ASLTA information. I explained to them that if their bylaws needed to be updated or revised, they must inform the Chapter Affiliation Chair. I also told them that the National ASLTA's bylaws will be revised and that I hope to have Mr. "Bummy" Burstein look at our bylaws.

I explained the Matching Fund. The Matching Fund will be available to chapters that are less than two years old. I also explained how to use the national ASLTA's Federal Tax number and Tax Exempt number. The chapters can use our Federal Tax number if they open a checking account. Each chapter should get its own Tax Exempt number.

The Chapters are responsible for sending me all professional development information if they have workshops or conferences in their areas.

On July 4th, the ASLTA Chapter Luncheon was held. There were 27 people. We had a pleasant lunch. We shared our experiences and news. In the afternoon, I was moderator at a workshop titled, "How to Establish a Local ASLTA Chapter."

The panelists were:

Alec Naiman, President of Greater New York ASLTA

Jeffrey Howard, President of Northwest ASLTA

JaNahne McCready-Johnson, President of Minnesota ASLTA

Agnes Sutcliffe, representative of Nation's Capital ASLTA

Patricia Beech, President of Veditz Chapter of ASLTA

Colleen Pouliot, President of Lilac Chapter of ASLTA

Bob Paul, President of Chicagoland ASLTA

Eric Scheir, President of California ASLTA

I want to thank these panelists. They gave excellent advice and answers. The audience and I asked questions. I hope that those of you who attended that workshop will establish chapters in your hometowns. If you are interested in establishing a local chapter in your hometown, contact me with smile.

The California ASLTA applied for Matching Funds for their first Biennial CA-ASLTA Conference at California State University at Northridge. It met our Matching Fund's requirements. The conference was a success! The ASLTA Board approved CA-ASLTA's application and supplied the appropriate funds. If you would like to get information about Matching Funds, please contact me.

Wishing all of you a enjoyable holiday with smile!

## More Chapter News

by E. Lynn Jacobowitz

California ASLTA (CA-ASLTA) had its first conference on October 11-12, 1996 at California State University Northridge. As the keynote speaker, I addressed the topic of evaluation and certification systems in the Communicative Skills Program (CSP), the Sign Instructors Guidance Network (SIGN), and the American Sign Language Teachers Association (ASLTA).

I also mentioned future ASLTA workshop goals, such as: Eric Scheir, "How Get ASLTA Certification How?"; Nathie Marbury, "Bravo ASL Curriculum"; Missy Keast, "Educate Through Poetry, Stories and Performances"; E. Lynn Jacobowitz, "Laughter Makes ASL Learning Easy: Incorporation of Deaf Humor in ASL Classes"; Evelyn Zola, "Reminiscing About Vanishing Signs in the Deaf Community"; Dr. Tom Humphries, "The Role of Language Explanation in the Natural Approach"; Nathie Marbury, "Visual Gestural Communication"; Cheri Smith, "Storytelling: A Tool for Building Fluency"; Joyce Groode-Linden,

continued on page 12

# PHOTOS FROM THE NAD-ASLTA CONVENTION IN PORTLAND,



**ASLTA Board Members and appointees. Standing L-R: Leslie C. Greer, Alec Naiman, Laura J. Thomas Roebal, William J. Newell, Ph.D., Colleen Pouliot, seated: E. Lynn Jacobowitz and Keith M. Cagle**



**ASL Specialists Committee, L-R: E. Lynn Jacobowitz, Larry Fleischer, Steve Nover, Laurene Gallimore, Jay Innes**



**ASLTA Chapter Representatives, standing L-R: Jerry Hassel, Jean Parmir, Carol Walker, JaNahne McCready-Johnson, Colleen Pouliot, Agnes Sutcliffe, E. Lynn Jacobowitz; sitting: Laura J. Thomas-Roebal, Janet Etkie-Schwall, Rachel Naiman, Leslie C. Greer**

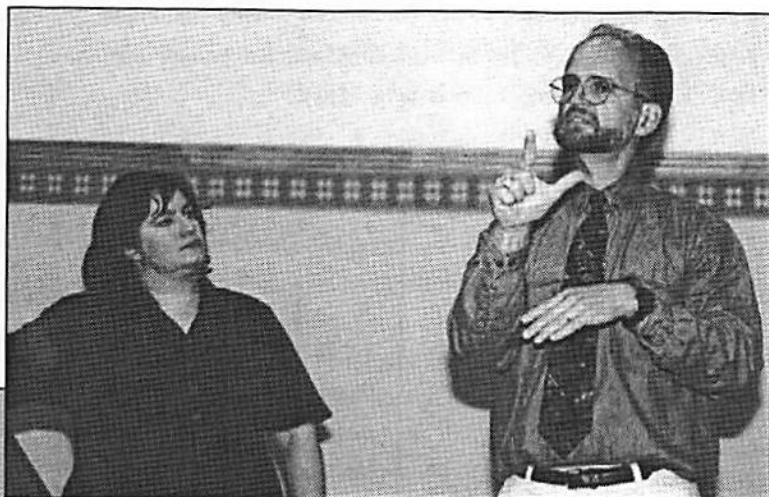


**ASLTA Chapter Representatives, standing, L-R: Keith M. Cagle, Ann Reifel, Eric Scheir, Cindy Scott, Ruth Ann Schornstein, E. Lynn Jacobowitz. Sitting: Mikki Simpson, Nancy V. Becker, Patricia Beech, Evelyn Zola**



**The two photos above show part of the ASLTA convention. Every chapter was**

*Layout by Nancy Freighton*



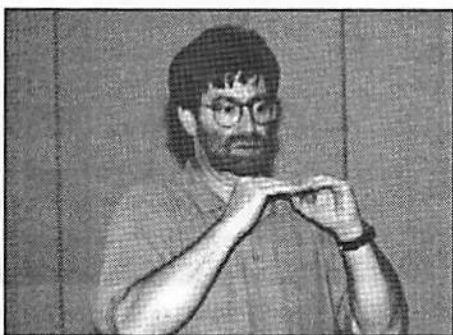
**Patty Togioka and Fred Fariior**



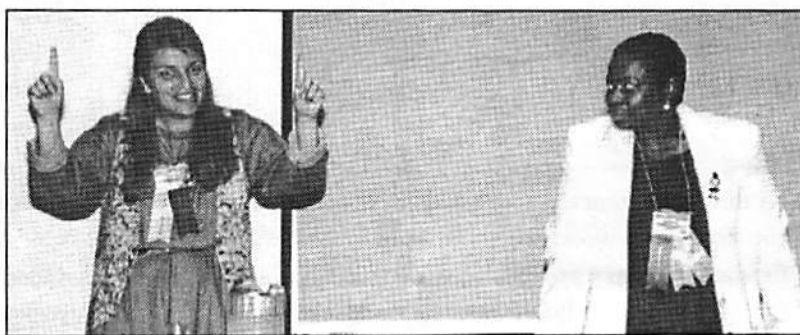
**ASLTA Chapter Representatives, standing, L-R: Jeffrey Howard, Dianne Lyles, Alec Naiman, Bob Paul, E. Lynn Jacobowitz; sitting: Debi Duren, William J. Newell, PhD., Robert Canty**



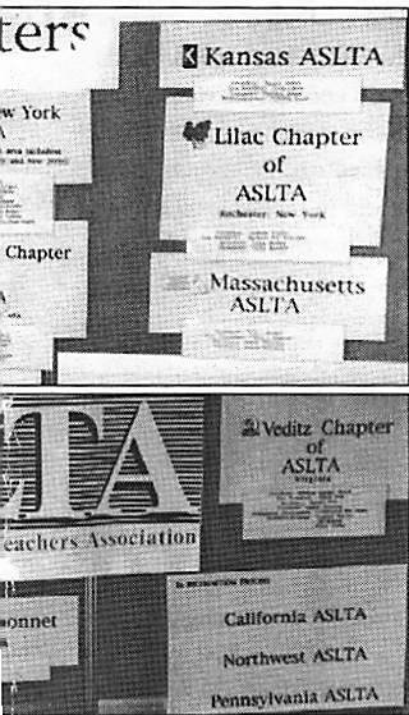
**Lynn**



**Dr. Mike Kemp**



**Jenna Cassell and Nathie Marbury of Sign Enhancers giving a workshop**



**Section of the NAD booth at the...  
...ted on the wall.**



**Patricia Beech, Ruth Ann Schornstein and Glenna Ashton**



**Chapter Presidents Meeting, L-R: Patricia Beech, Keith M. Cagle, JaNahne McCready-Johnson, Eric Scheir, Jeffrey Howard, Alec Naiman and Leslie C. Greer**

## Chapter News

continued from page 9

"Fingerspelling: Who, What, Where, How, Why and When"; and Charles Katz, "The Role of Voice in ASL Instruction".

There were 93 participants at the conference, which featured the National Theater of the Deaf production, "Curiouser and Curiouser." At the general meeting on Sunday afternoon, Eric Scheir — as the newly elected President — spearheaded the conference with the help of stalwart support from CSUN and the Gallaudet University Regional Center at Ohlone College. The other newly elected officers include: Mike Johnson of Fremont, Vice President, Cindy Hodges of Fresno, Secretary, and Jeff Dichter of Los Angeles, Treasurer.

Congratulations, Eric and your committee for a fine conference. I hope your spearheading efforts will spread to other parts of California! I must say the conference was smashing!

## Florida ASLTA

### News Flash!

A mini-conference is coming up on the January 31 - February 2, 1997 weekend. Their tentative schedule is:

#### Friday, January 31

- 5:30 - 7 pm Board Dinner; working meeting  
7:30 - 9 pm Sam Holcomb, "Hot Issues in ASL Teaching." There will be a reception afterwards.

#### Sat., Feb. 1

- 8:30 am - 10 am Sam Holcomb will lecture on his book, "Deaf Culture, Our Way: How to Use His Book in the Classroom"  
10:30am to 12 pm Keith Cagle will present "Hearing and Deaf Cultures: A Comparative Study"  
1:30 - 3 pm Business meeting and elections  
3:15 - 4:15 pm Sam Holcomb will give a short workshop, "Drills in the Classroom," an expansion of activities with books.  
4:15 - 5:30 pm Regional group sessions  
7:30 - 9 pm Surprise entertainment  
9 pm Free-form discussion on new ideas, activities and stimulations

#### Sunday, February 3

- 9:30 till 11 am Keith Cagle on how to obtain ASLTA certification.  
11 am till noon Conference wrap-up  
12 pm - 1 pm Board meeting

The conference closes at noon. This conference will be held in St. Augustine, Florida. For more information, email [ALYSSER@AOL.COM](mailto:ALYSSER@AOL.COM) or write to Alysse Rasmussen, 407 S. 12th Street, Leesburg, Florida 34748-5747.

## Nation's Capital ASLTA

A two-day workshop, Signing Naturally Level 1, by Lori Maynard, Assistant Professor, Interpreter Preparation Program at Catonsville Community College, scheduled for November 2-3, 1996, was postponed to a later date due to insufficient enrollment. However, their Fall Social-Potluck on Friday, October 25, 1996 in Peikoff Alumni House, "Ole Jim" at Gallaudet University, was successful. They had a program of entertainment and prizes for the best jokes, storytelling and ABC folklore.

## Bluebonnet ASLTA (Texas)

Jerry Hassell, Secretary, wrote an article about the Bluebonnet ASLTA during the NAD convention in Texas State Association of the Deaf newsletter. He bragged that the first S.I.G.N. President, Marvin Sallop, was from Texas. Also, he boasted that the Texas was the first state to recognize ASL as a language in 1967, although at the time it was called "dactylology." The legislation was rewritten twice, in 1979 and 1989. The Texas Deaf Caucus conference charged Jerry Hassell to approach a board in Texas to develop certification for ASL. There are two separate boards in Texas: the State Board for Educator Certification, which deals with certification for public schools; and the Texas Higher Education Coordinating Board, which focuses on colleges and universities. To this date, there is little or no material on how to have both boards adopt certification proceedings. If any state has materials, kindly send some to him and to me. This endeavor is important and cannot be ignored when there are so many incompetent ASL teachers out there.

## Frederick ASLTA

E. Lynn Jacobowitz gave a workshop to over 20 participants titled: "Classifiers: How to Use and Evaluate Them" on September 21, 1996. The enthusiasm was high in Frederick and I predicted there will be more workshops like it coming up in elsewhere in Maryland. A couple of participants from Delaware attended and decided to form a chapter in Delaware soon. I look forward to working with them, too. Ruthann Schornstein presented "Numbers in ASL" on December 7, 1996 at Frederick Community College. Brian Brizendine, President of Frederick ASLTA and Raychelle

continued on page 13

## Chapter News

continued from page 12

Harris, ASL Program Coordinator at College of Continuing Education, will co-present "Do's and Don'ts in ASL Classes" in February, 1997. There will be a meeting on January 11th, 1997. There will be two more workshops in March and April. This chapter sounds promising.

### Rhode Island

The legislature passed a bill that recognizes ASL! I hope they will set up an ASLTA chapter and require ASLTA certification in their state. If you know of any states that have added certification requirements since my last research in December, 1995, please call or email me.

### Veditz ASLTA (Virginia)

Fred Hartman was scheduled to give a workshop titled "Fingerspelling and Number Usage" on Saturday, November 16, 1996 from 9 am to 3 pm. Their board meeting was held December 4 at 7 pm. On Tuesday, January 7, 1997 at 7 pm, there is a program meeting called "Syllabus and Grading" (snow date: Jan 14). On Monday, February 10, at 7 pm, the program meeting will be on "How to Obtain ASLTA Certification." On March 17 at 7 pm, there is a board meeting. On Tuesday, April 22 at 7 pm, the program meeting will

be a retrospective on "Deaf Studies Conference." On Monday, May 19, at 7 pm, there will be the annual meeting and election. On Monday, June 23 at 7 pm, there will be a board meeting. All events are in the Reuben I. Altizer Meeting Room at the Northern Virginia Resource Center for Deaf and Hard of Hearing Persons. For more information, call Patricia Beech at 703-866-0797 TTY/Fax or E-mail: gaiter@oasys.dt.navy.mil. Their October 1996 newsletter carried a wide array of news, calendar events, nearby chapter news, points of contact for ASL Teaching Jobs, job announcements, and a brief history of VASLTA. This newsletter was a gem! Kudos to the President, Patricia Beech, who is also the Editor of Veditz ASLTA!

### Lilac Chapter of ASLTA (Rochester, NY)

E. Lynn Jacobowitz presented "Laughing Makes ASL Learning Easy: Incorporating Humor in ASL Classes" on November 20. An opportunity to socialize with members of the Lilac Chapter of ASLTA followed.

### Nebraska

Keith M. Cagle was invited by the Nebraska Commission for the Hearing Impaired in Omaha to give training on the

continued on page 16

## GALLAUDET UNIVERSITY, DEPARTMENT OF ASL, LINGUISTICS AND INTERPRETING FACULTY POSITION: ASL STUDIES PROGRAM

The Department of American Sign Language, Linguistics and Interpretation in the Gallaudet University School of Communication announces an 11-month faculty position at the Instructor or Assistant Professor level, Ph.D. preferred. The position is primarily in the areas of teaching American Sign Language and teaching undergraduate/graduate department majors in American Sign Language. Preference will be given to candidates with additional qualifications in other areas of linguistics.

### QUALIFICATIONS:

1. Ph.D. in linguistics, applied linguistics or second language teaching preferred. Candidates without the Ph.D. will be considered, based on their experience with linguistics and the teaching of American Sign Language.
2. Experience teaching American Sign Language in formal programs; prior experience in another relevant area (e.g., Interpreting, American Sign Language Literature, Deaf Culture, etc.) also will be considered helpful.
3. American Sign Language Teachers Association Professional certification preferred. (If no certificate at time of application, must get one within three years.)
4. Research interest and experience in some aspect of sign language and record of publication in major field preferred.
5. Demonstrated excellence in teaching.

### RESPONSIBILITIES:

1. Teach both graduate and undergraduate American Sign Language skill courses.
2. Teach courses in the undergraduate major, which focuses on theory and practice of teaching American Sign Language.
3. Participate in development and revision of curricula for both new and existing programs.
4. Supervise practicum and internship students.
5. Teach American Sign Language structure courses.
6. Coordinate Undergraduate and Graduate ASL Programs as well as Summer programs such as the New Signers Program and Culture and Language Colloquium ASL Program.
7. Assume normal faculty responsibilities as assigned.

**SALARY AND RANK:** Appointment at Assistant Professor rank for applicant with Ph.D. in hand. Applicants without a Ph.D. in hand may be appointed at the rank of Instructor. Salary will be commensurate with experience and qualifications. *Starting Date: August 18, 1997.*

**APPLICATION PROCEDURES:** Send letter of application, vita, and three letters of reference demonstrating quality of research and teaching to: Search Committee, American Sign Language Program, Department of ASL, Linguistics and Interpretation, Gallaudet University, Washington, DC 20002, *Closing Date: March 1, 1997.*

# SPECIAL INTEREST GROUPS (SIGs) AND THE PROFESSIONAL PROGRAM QUALIFICATIONS

Early Childhood ASL/Deaf Studies Teachers	K - 12 ASL Teachers (L1 and L2)/Deaf Studies Teachers	ASL/Deaf Studies Teachers/ Trainers at Colleges/ Universities	ASL Accreditation and Standardization	ASL Proficiency Interview Raters	ASL/Deaf Specialists/ Pathologists
<b>BA/MA</b> Early ASL Acquisition Related Courses:  Early Childhood Education Language Development Psycholinguistics Parent Infant Education Cognition Psychomotor Development Language Acquisitions Language	<b>MA/Ph.D.</b> ASL Pedagogy Related Courses:  Curriculum Methods of Teaching ASL Sign Systems Sign Writing Bilingualism Visual Gestural Communication Deaf Studies Second Language Acquisition ASL Phonology ASL Morphology	<b>BA/MA/Ph.D.</b> ASL Linguistics Related Courses:  Phonology Morphology Syntax Psycholinguistics Sociolinguistics Bilingualism Sign Systems Sign Writing Pragmatic Higher Education Language Acquisitions	<b>BA/MA /Ph.D.</b> ASL Linguistics and ASL Program Management Related Courses:  Phonology Morphology Syntax Psycholinguistics Sociolinguistics Sign Systems Sign Writing Pragmatic Language Policy and Planning Program Supervision and Administration	<b>BA/MA /Ph.D.</b> ASL Language Proficiency Assessment and Evaluation Related Courses:  Phonology Morphology Syntax Psycholinguistics Sociolinguistics Discourse Analysis Pragmatic Communication Evaluation and Assessment Techniques Interview Techniques	<b>MA/Ph.D.</b> ASL Pathologists/ Specialists/ Therapists Related Courses:  Physiology Cognition Psychomotor Development Neurology Assessment and Diagnostics Intervention Communication Sciences Language Acquisitions Bilingualism

## ASLTA CERTIFICATION REQUIREMENTS FOR SIG

ASLTA: Early Childhood ASL	ASLTA: K12 ASL	ASLTA: College/ University ASL Teacher/ Trainer	ASLTA: Linguistics	ASLTA: Language Proficiency Interview	ASLTA: ASL Specialists
1) Teaches ASL/ Deaf Studies to Deaf/Hard of Hearing Kids Ages 0-5 2) Works With Parents of Deaf/Hard of Hearing Kids	1) Teaches ASL as First and/or Second Language 2) Teaches Deaf Studies 3) Meets ASLTA, CED, NABE and ACTFL Standards and Certification	1) Teaches ASL as First and/or Second Language in Higher Education 2) Trains Students to Teach ASL as First and/or Second Language in K12 and/or Higher Education 3) Teaches/Trains Student	1) Establishes Guidelines of ASL Standardizations in ASL Linguistic and Sign Terminology 2) Approves and Gives Accreditation to ASL Programs That Meet a Certain Number of Certified ASLTA Teachers	1) Interviews and Evaluates: ASL Teachers of Deaf/Hard of Hearing Students; Deaf Studies Teachers; ASL Specialists; Administrators/Staff/ Faculty Members 2) Trains ASL Teachers to Become ASLPI Raters	Meets Communication and Language Therapeutic, Habilitation and Rehabilitation for Deaf, Hard of Hearing, Latened Deaf, Elderly, Stroke Victims, Aphasiacs, Stutterers, ASL Discourse Disorders, Etc.

## ASLTA HITS 500!

Mindy Ann Moore, a student at Gallaudet University in Washington, DC, became the 500th member of ASLTA. This time last year, there were approximately 365 national members of ASLTA, and we continue to grow daily.

Thanks for joining us, Mindy, and contributing to our growth!

# A BRIEF HISTORY OF SIGN INSTRUCTORS GUIDANCE NETWORK (SIGN), AND AMERICAN SIGN LANGUAGE TEACHERS ASSOCIATION (ASLTA)

*Written by William J. Newell, Ph.D.*

*Compiled by Marja Miceli Abenchuchan, Keith M. Cagle, Melvin Carter, Jr., E. Lynn Jacobowitz, Willard J. Madsen and Jane Norman; excerpted from NAD-ASLTA Program Book, Portland, Oregon 1996*

We celebrate our 20th year as a professional association of American Sign Language Teachers. Actually the beginnings of SIGN go back more than 20 years to around 1973 when the National Association of the Deaf's (NAD) Communicative Skills Program (CSP) under the direction of T.J. O'Rourke "TJ" obtained a grant to promote the "standardization" of sign language instruction and the "facilitation" of the establishment of sign language instruction and the "facilitation" of the establishment of sign language classes and programs across the United States. Our first official meeting occurred in conjunction with the biennial convention of the NAD in Houston, Texas in July, 1976. This is why we are marking this year, 1996, as our 20th anniversary.

This attempt to reconstruct the "history" of SIGN and ASLTA will be brief and most likely, at least, partially inaccurate. I became a member of SIGN myself in 1976 but was not involved at the national level with SIGN until 1986 when I assumed the position as President. In reconstructing this brief history I have relied on other members of our current ASLTA board, the former director of the CSP and home office manager of SIGN, Mel Carter as well as others. What this "little exercise" to reconstruct the history of SIGN/ASLTA proves to me is that we desperately need someone to assume the role as "archivist/historian" for our organization. We have records and documents in boxes at the NAD home office which contain invaluable information about the beginnings and the "rocky" history of our first 20 years. Now is the time for us to capture and preserve some of the most important of these documents for the future. I urge anyone of our members reading this who has an interest in history or anthropology to take up the charge to become our archivist/historian and begin working on reconstructing an accurate history of SIGN/ASLTA and documenting this for future generations of ASL teachers. This project could make an excellent doctoral research project for someone's dissertation and would be of great practical value to ASLTA. The remainder of this paper will be presented in outline form

which I believe will give readers the quickest overview of some of the highlights of the history of SIGN/ASLTA.

## **Beginnings of SIGN**

SIGN was established as part of the CSP of the NAD in 1973. CSP was a grant supported project of the NAD devoted to the promotion of "manual communication" instruction across the United States. Related to this I recall attending a meeting in 1972 in Houston, Texas when I was a teacher of deaf students because this "famous" deaf man was coming to Houston to talk about "manual communication" instruction. I attended this presentation by TJ only now realizing that his speech in Houston, Texas in 1972 was a part of this CSP effort to promote the teaching of "manual communication" across the United States.

The period from 1973 to 1976 was used to develop the organizational structure, bylaws and to develop the SIGN evaluation system which was to become a main focus of SIGN and early leadership.

TJ was director of CSP, 1973 - 1979. A team including Dennis Cokely, Will Madsen, Jane Norman, and David Knight were primarily responsible for developing the original SIGN evaluation system. Other persons who were instrumental in the initial evaluation system efforts include members of the original evaluation team, TJ, Eleanor Propp, Mabs Holcomb, George Johnston, Paul Menkins, Betty Colonomos, and Larry Berke.

The first SIGN evaluation of teachers took place in conjunction with the NAD/SIGN convention in Houston, Texas in 1976.

Melvin Carter became director of CSP and home office manager of SIGN in 1979 upon the resignation of TJ. Mel remained as CSP director until 1984.

## **Presidents of SIGN / ASLTA**

1976 - 1978 Marvin Sallop  
1978- 1980 Kenneth Rust  
1980- 1984 Larry Fleischer

1984- 1986 Nancy Frishberg  
1986- 1990 William J. Newell  
1990- 1995 Keith M. Cagle  
1995 - E. Lynn Jacobowitz

### **Period of Decline and Revitalization**

With the departure of Mel Carter as director and home office manager of SIGN in 1984 there was no foundation by which officers of the organization could carry on the work of SIGN. From 1984 — 1986 SIGN practically collapsed as an organization.

In 1986, at the Salt Lake City convention, then executive director of the NAD, Gary Olsen called an emergency meeting of any members of SIGN in attendance to the convention. There was no planned meeting of SIGN at this convention and there had been no evaluations conducted. At this emergency meeting Mr. Olsen requested that the members in attendance elect a slate of officers to "revitalize" SIGN. At this meeting, yours truly Bill Newell was elected President, Keith Cagle was elected Vice President, and Isabelle Calvacca was elected Secretary/Treasurer.

Due to lack of consistent management and oversight in the period from 1984 — 1986, the SIGN evaluation system and the team of evaluators was "defunct". One of the first acts of President Newell was to suspend the SIGN evaluation system until the entire system could be reviewed, training could be provided and a new core of evaluators could be ready carry out a primary mission of SIGN/ASLTA to provide a peer review evaluation system for teachers of ASL.

SIGN evaluation system revisions occurred from 1986 1988 and the SIGN evaluation was again administered at the Charlotte, South Carolina convention in the summer of 1988. Training of a new team of evaluators occurred prior to administration of the evaluation at this convention. This training was provided by Mel Carter to insure continuity to the evaluation which had occurred prior to the collapse of SIGN. The late Alan Barwiolek was appointed chairperson of the evaluation team.

### **SIGN Was "Back on Its Feet"!!!**

Another major agenda for my term as president was to begin the establishment of local chapters of SIGN (now ASLTA). I recognized that we were limited at the national level in what we could effectively do for local teachers of ASL. Only at the grassroots level could local groups have an impact on their own training as ASL teachers. During my term as president I initiated the promotion and establishment of local chapters which continues today. Our chapters

are growing rapidly. They are and will become the most important element of our ability to create the profession of ASL teaching!

In October of 1991, under the leadership of President Keith M. Cagle, SIGN was able to shake off the "outdated" references to its name as an organization that we were the American Sign Language Teachers Association (ASLTA).

In our first 20 years our organization has grown and matured. We have grown up with and practically created the profession of ASL instruction. Our history reflects the growing awareness, pride and understanding of what it means to be an ASL teacher. Our history reflects the growing self-awareness that our field has experienced since the early 1970s. It has not been an easy path, but we made it through. We are still here and we are still "kicking". We are stronger than ever. Let us remain strong and continue to grow. Under the direction of our current president, E. Lynn Jacobowitz, ASLTA has expanded its membership, the number of local chapters have increased from 10 to 19 chapters and we are preparing ourselves to broaden our areas of interest and influence in the broad field of ASL. As our progenitor, George Veditz, President of NAD, 1913 has proclaimed, "Sign Language is God's noblest gift to the deaf." May we, who teach ASL to others, share this same reverence for ASL and convey this sense of awe to our students.



### **Chapter News**

continued from page 13

teaching of ASL and to explain the procedures of obtaining national certification, as well as for establishing a local chapter. There is a steering committee with representatives from Iowa and Nebraska to study the feasibility of establishing a bi-state chapter of ASLTA, separate state chapter or regional chapter of ASLTA (from Lincoln to Des Moines). There were over thirty-five participants.

### **Northwest**

E. Lynn Jacobowitz gave three workshops, "Visual Readiness in ASL Classes", "Laughing Makes ASL Learning Easy: Incorporating Humor in ASL Classes" and also, "Introduction to ASLTA and The Certification Process," co-sponsored by the Abused Deaf Women's Advocacy Services (ADWAS) and Northwest ASLTA (working on their official recognition soon) on December 7.



# NEW AND RENEWING MEMBERS OF ASLTA

Let's welcome new (n) and renewing (r) members;  
May — Nov., 1996:

- |  |  |  |   |
|--|--|--|---|
| Ainsley, Connie A. (n), Council Bluffs, IA   | Bouton, Cathi (r), Fairbanks, AK                             | Combee, Linda R. (n), Lakeland, FL       | Filer, Peggy A. (r), Alamosa, CO  |
| Alruna, Mary (r), Stewart Manor, NY          | Brittingham-Garrido, Dana L. (n), Dixon, CA                  | Conner, Jerry (r), St. Petersburg, FL    | Fleischer, Lawrence (r), Granada Hills, CA                              |
| Amann, Nancy Hlibok (n), Tucson, AZ          | Bruno, Sallie M. (r), Mastic Beach, NY                       | Connor, Rosalee (r), Silver Spring, MD   | Flores, Lorraine (r), Oakland, CA                                       |
| Anicello, Jodene M. (n), Bothell, WA         | Bryant, Patrick A. (r), Dublin, VA                           | Cooper, Sheryl B. (n), Columbia, MD      | Forbes, Joanna (r), Schuylkill Haven, PA                                |
| Arellano, Leticia (n), Westminster, MD       | Buell, Stephanie T. (n), Madison, WI                         | Corbett, Mary Ann (r), Columbus, OH      | Ford, Christine (n), Phoenix, AZ  |
| Armour, Torrie V. (r), Rochester, NY         | Buisson, Gerald J. (r), Covington, LA                        | Cornwell, Amy L. (r), Bloomington, IN    | Fortney, Olin Russell (n), Ocean Beach, CA                              |
| Ashton, Glenn (r), Boca Raton, FL            | Burch, Daniel D. (r), Baton Rouge, LA                        | Cronlund, Judith (r), Rome, NY           | Foshee, Eleanor (r), Augusta, GA  |
| Austin, Sheila L. (n), Galloway, OH          | Bush, David S. (r), Fort Wayne, IN                           | Crook, Elizabeth (r), Tyler, TX          | Foster-Shearburn, Geneva (n), St. Louis, MO                             |
| Bahleda, Suellen J. (n), Eagle River, AK     | Caccamise, June Reeves (r), Rochester, NY                    | Cross, Karen (r), Lexington, KY          | Frankel, Sandra (r), Olney, MD  |
| Baker, Jenifer T. (n), Lacey, WA             | Calvacca, Isabelle (r), Fort Myers, FL                       | Cuervo, Juan (r), Midland Park, NJ       | Fraychineaud, Kathy (n), Tucson, AZ                                     |
| Barbara, Nancy J. (r), Tampa, FL             | Campbell, Christopher (n), Clay, NY                          | Decker, Dinah J. (n), Cortland, NY       | Frazier, Nancy K. (n), Westminster, MD                                  |
| Barkstrom, Diane L. (r), Pleasant Valley, NY | Campbell, Cindy (n), Clay, NY                                | Decker-Pickell, Cindy J. (n), Wilson, NC | Fritz, Julia (n), Vancouver, WA   |
| Bart, Jenifer A. (n), Vancouver, WA          | Campbell, Diana (n), Farmington Hills, MI                    | Deville, Gayle Anne (r), Danville, KY    | Gabel, Sherry (r), Olathe, KS   |
| Baumgardner, Barbara (n), Cheyenne, WY       | Canty, Robert (r), Indianapolis, IN                          | DiRoberto, Lori (r), Akron, OH           | Gallimore, Laurene E. (n), Salem, OR                                    |
| Bearman, Sandra Lynn (n), Shelburne, VT      | Carmean, Jennifer (n), San Diego, CA                         | Dickinson, Susan Joan (n), Littleton, CO | Glad, Laura (n), Craig, CO  |
| Beech, Patricia (r), Springfield, VA         | Cassell, Jenna (n), Dallas, OR                               | Dively, Valerie (r), Bowie, MD           | Glickman, Karen R. (r), Beverly, MA                                     |
| Beldon, Elizabeth (r), Mishawaka, IN         | Cerney, Brian (r), Wexford, PA                               | Downing, Carol L. (n), Arlington, VA     | Gonzalez, Oscar Luis Hernandez (n), 38320 Santa Cruz De Tenerife Spain, |
| Bell, Janice K. (r), Columbus, OH            | Chametnik, Sandy (r), New York, NY                           | Dyal, Dale A. (r), Una, SC               | Gordon, Jean M. (r), New Carrollton, MD                                 |
| Belsky, Marta S. (r), Okemos, MI             | Chowdhury, Abdur Rashid (r), Khatal Bagan Dhaka, Bangladesh, | Dye, Margarette M. (n), Atlanta, GA      | Gramly, Charles F. (r), Worthington, OH                                 |
| Berke, Lisa J. (n), Troy, VA                 | Christensen, Kathee (n), San Diego, CA                       | Eades, Nancy L. (r), Olathe, KS          | Gratzke, Vicki (n), Schaumburg, IL                                      |
| Bienvenu, MJ (r), Gaithersburg, MD           | Cinatl, Michael (r), N. Richland Hills, TX                   | Earls, Lori L. (n), Westminster, MD      | Graves, Carolyn K. (n), Port Orchard, WA                                |
| Bigelow, Tim M. (n), Hillsboro, OR           | Clough, Catherine (r), Richmond, VA                          | Edwards, Betty (r), Clearwater, FL       | Greer, Leslie (r), Albuquerque, NM                                      |
| Bilbrey, Debra (n), Renner, SD               | Cobb-Wessling, Maggi (n), Ft. Thomas, KY                     | Edwards, Laura R. (n), Manitowoc, WI     | Griffith, Patricia L. (n), El Cajon, CA                                 |
| Blumerick, Marika V. (r), Shelby Twp, MI     | Cohen, Richard (n), Parsippany, NJ                           | Ellsworth, Anne M. (n), Lacey, WA        | Harbison, Kathryn (n), Delavan, WI                                      |
| Boesen, Suzanne (n), Austin, TX              | Collins, William T. (n), Wesley Chapel, FL                   | Ennis, David E. (r), Middletown, MD      | Harbison, Tom (n), Delavan, WI  |
| Bonni, Betti (r), Pinellas Park, FL          |  | Epstein, Paula (r), Miami, FL            | Harris, Raychelle L. (n), Silver Spring, MD                             |
| Boosey, Cynthia (n), Johnson City, TN        |  | Estes, Dinah (n), Eufaula, AL            | Hassell, Jerry (r), Austin, TX  |
|  |  | Farrior, Fred E. (n), Salem, OR          |   |
|  |  | Fask, Judy Freedman (r), Worcester, MA   |   |

continued on page 18



## ASLTA Members

continued from page 17

- Hayden, Eleanor (r), Baltimore, MD  
Heisey, Lindsey C. (n), Frederick, MD  
Herbst, Cynthia L.K. (r), Reseda, CA  
Hirsch, Ann (r), Westminster, MD  
Hirsch, David (r), Westminster, MD  
Hoffman, Arlene J. (n), Arlington, VA  
Holcomb, Barbara (r), West Henrietta, NY  
Holcomb, Samuel (r), West Henrietta, NY  
Honner, Maryjane Stelmach (r), Clinton Township, MI  
Hoover, Lois E. (n), Lacey, WA  
Hordiewich, Effie (r), Campbell, OH  
Howard, Pamela Marie (n), Mesa, AZ  
Huston, Bill (r), Andover, MA  
Ingham, Edward W. (n), Portland, OR  
Isham, William P. (n), Albuquerque, NM  
Jacobowitz, E. Lynn (r), Silver Spring, MD  
James, Margaret A. (r), Milwaukee, WI  
James, Raphael (n), Little Rock, AR  
Johnston, Edna (r), Cary, IL  
Johnston, George (r), Plainfield, NJ  
Jones, Helen (r), Toledo, OH  
Julander, Jes A. (n), Salt Lake City, UT  
Kahn, Paul (n), Baltimore, MD  
Kannapell, Barbara (n), Washington, DC  
Kelly, Ed (n), Long Beach, CA  
Klein, Mary Geralyn (r), Okemos, MI  
Klopping, Sandra Lee (r), Fremont, CA  
Knowles, M. Leslie (n), New Orleans, LA  
Kranis, Jo Ann (r), New York, NY  
Kruse-McConville, Brenda L. (n), Council Bluffs, IA  
Kuhns, Belinda O. (r), Columbus, OH  
Kush, Kathleen (r), Darien, IL  
Laba, Char (r), Washington, DC  
Langholtz, Daniel J. (n), San Francisco, CA  
Lazorisak, Carole (r), Staten Island, NY  
Lazzari, Nina M. (n), Jacksonville, FL  
LeMieux, Darcie (r), Aloha, OR  
Leavitt, Gary L. (n), West Jordan, UT  
Lefebvre, Karen E. (r), Loudonville, NY  
Lentz, Ella M. (r), Hayward, CA  
Lipsky, Jim (n), Boston, MA  
Lockard, Beth (r), West Chester, PA  
Lockmiller, Carlotta (r), Ada, OK  
Lundborg, Nancy L. (n), Odenton, MD  
Lupo, Michael (n), Greenville, NC  
Luttrell, Jolene W. (n), Frederick, MD  
Luttrell, Susan I. (n), Frederick, MD  
Lyons, Beatrice R. (r), Hixson, TN  
Lyster, Sharon L. (n), Waldorf, MD  
Madsen, Willard J. (r), Seabrook, MD  
Mahmood, Linda (r), Rocky River, OH  
Mahmood, Shukry (n), Beaumont, TX  
Malcolm, Richard (r), Baton Rouge, LA  
Manley, Claire L. (n), Omaha, NE  
Manning, Carol B. (r), Omaha, NE  
Marbury, Nathie Lee (n), Keizer, OR  
March, Heather (r), Princeton, MA  
Marsh, Charles (r), Olathe, KS  
Martin, Manuel D. (n), Wrentham, MA  
Massey, C. Robin (n), Bowie, MD  
Mayra, Anna (r), Anchorage, AK  
Mazza, Maureen J. (n), Oro Valley, AZ  
McDavid, W.R. (Randy) (n), Jacksonville, FL  
McEntee, Maureen (r), Foster, RI  
McKenzie, Shirley (r), Davison, MI  
McKinney, Charlie (r), Lexington, SC  
McMullen, Susie (r), Akron, OH  
Miller, Hedy L. (r), Milwaukee, WI  
Moore, Julie S. (r), Portland, OR  
Moore, Mindy Ann (n), Washington, DC  
Morey, Patricia F. (r), Valley Cottage, NY  
Morikawa, Georgia (n), Honolulu, HI  
Morrison, Freida M. (n), Troy, MI  
Mosleh, Mary (r), Brooklyn, NY  
Mounicou-Buckley, Deborah (n), Attica, NY  
Murphy, Gayle A. (r), Grove City, OH  
Naiman, Rachel (r), Lakewood, CO  
Naughton, Karen K. (n), Albuquerque, NM  
Nelson, Janet L. (n), Vancouver, WA  
Nelson, Kimela (r), Iowa City, IA  
Neumann, Tina M. (n), Scottsdale, AZ  
Nicolay, Yvonne (n), Vancouver, WA  
Niedermaier, Jan (n), West Trenton, NJ  
Nover, Stephen M. (r), Tucson, AZ  
Nunes, Charlene A. (n), Stockton, CA  
Oliver, Diana (r), Fulton, MO  
Owens, Timothy "Timo" (r), Louisville, KY  
Palmer, Howard (n), Jackson, MS  
Palmisano, Mary Jo (n), Washington, DC  
Parker, Connie M. (r), Niles, MI  
Parker, Susan K. (n), Bremerton, WA  
Parks, Ray S. (r), Portland, ME  
Perry, George K. (n), Indianapolis, IN  
Polk, Adele M. (r), Woodbridge, VA  
Poor, Geoffrey S. (r), Rochester, NY  
Pritchard, Alva Dean (r), Jacksonville, FL  
Rask, Karen M. (r), Columbia Heights, MN  
Rasmussen, Alysse (r), Leesburg, FL  
Reeves, Jodi (n), Kent, WA  
Reifel, Ann (n), Indianapolis, IN  
Rendon, Marie (n), Spokane, WA  
Revell, James (n), Tucson, AZ  
Ricca, Judith A. (n), Silver Spring, MD  
Ricci, Virginia F. (r), Oakdale, MN  
Riggs, Thomas (r), Longmont, CO  
Roberts, Patricia N. (r), Solon, OH  
Roche, Daniel J. (n), Park Forest, IL  
Rolewitz, Michele M. (n), Fargo, ND  
Rosenfeld, Paul (n), Rockville, MD  
Rosenthal, Lore Lyon (r), Philadelphia, PA  
Roth, Ellen D. (n), Chicago, IL  
Rouso-Stelzer, Rhoda (r), Brooklyn, NY  
Rudy, Bonnie J. (n), Albuquerque, NM  
Rusi, Ellen H. (n), Victoria BC Canada  
Rust, Kenneth (n), Southfield, MI  
Rutherford, Susan D. (r), Berkeley, CA  
Schatz, Susan (r), Alexandria, VA  
Schein, Jennifer J. (n), Hyattsville, MD  
Schniedewind, Robert (n), Portland, OR  
Schooley, James C. (r), Kissimmee, FL  
Schreyer, Paul W. (r), Raleigh, NC  
Schroeder, Carl (r), New Carrollton, MD  
Schweitzer, Carol (r), Marshall, WI  
Selph, Barbara (r), Boiling Springs, NC  
Shockley, Nancy L. (n), Lawrence, KS  
Simpson, Eileen M. (n), Morganton, NC  
Sinclair, Mary Lynn (n), Walkersville, MD  
Sinclair, Wayne (n), Walkersville, MD

# NATIONAL ASLTA EXECUTIVE BOARD

## President

E. Lynn Jacobowitz  
Dawes House  
Gallaudet University  
800 Florida Ave. NE  
Washington, DC 20002  
202-651-5450 TTY; 202-651-5741 FAX  
eljacobowitz@gallua.gallaudet.edu

## Vice President

Keith M. Cagle  
Gardner-Webb College  
Campus Box 283  
Boiling Springs, NC 28017  
cagle@hci.net

## Secretary/Treasurer

Laura J. Thomas-Roebal  
Helen Keller National Center  
North Central Office  
205 West Wacker Drive, Suite 919  
Chicago, IL 60606-1212  
312-726-2810 TTY; 312-726-3503 FAX  
ljtr@aol.com

## Evaluation Chair

William J. Newell, Ph.D.  
Center for Research, Teaching and Learning  
NTID/RIT  
52 Lomb Memorial Drive  
Rochester, NY 14623-5604  
716-475-6275 V/TTY; 716-475-6500 FAX  
wjnncd@rit.edu

## Chapter Affiliation Chair

Leslie C. Greer  
Department of Linguistics  
Humanities Building #550  
University of New Mexico  
Albuquerque, NM 87131-1196  
505-277-7414 TTY; 505-277-6355 FAX  
greer@unm.edu



American Sign Language Teachers Association  
(ASLTA) is a professional organization within the  
National Association of the Deaf (NAD)  
814 Thayer Ave., Silver Spring, MD 20910.

Sindicic, Renato I. (n), St.  
Augustine, FL  
Smith, Daniel (n), Indianapolis,  
IN  
Smith, Margaret Rom (r),  
Boardman, OH  
Smith, Marilyn J. (n), Seattle,  
WA  
Snyder, Carolyn (r), Little  
Rock, AR  
Solow, Sharon (r), Pebble  
Beach, CA  
Spradlin-Elliott, Dedi L. (n),  
Blue Ridge, VA  
Stack, Henry (n),  
Portland, OR  
Staller, Karen Beth (r),  
Philadelphia, PA  
Stamper, Linda (n), Silver  
Spring, MD  
Stone, Joan (r),  
Pittsburgh, PA  
Stone, Rachel (n),  
Westminster, MD  
Straubhaar, Rita (r),  
Burlington, VT  
Sturm, Valerie (r), West  
Jordan, UT  
Suggs, Trudy (n), Westmont,  
IL  
Sullivan, Vicki Joy (r),  
Lawrenceville, NJ  
Supalla, Ted (r), Rochester,  
NY  
Sweatman, Dru Tucker (n),  
Mobile, AL  
Sykora, Alice (r), Lake Mills,  
WI  
Tadak, Patricia A. (r),  
Cheektowaga, NY  
Thomas, Alan L. (n), Moline,  
IL  
Thompson, Betti (n), Roanoke,  
VA  
Timperlake, Benna H. (n),  
Corpus Christi, TX  
Trujillo, Gwen (n), Cincinnati,  
OH  
Upchurch, Melissa L. (n),  
Cedar Rapids, IA  
Van Den Berg, Patricia (n),  
Roseville, MI  
Vaughn, Lisa (n), Brattleboro,  
VT  
Vicars, William G. (r), Layton,  
UT  
Ward, Jill (r),  
Salem, OR  
Warshaw, Farley (n), Frederick,  
MD  
Warshaw, Janice (n), Frederick,  
MD  
Watts, Dawn K.B. (n), Falls  
Church, VA  
Weiner, Lynn (n),  
Germantown, MD  
Weinrib, Melinda M. (r),  
Flushing, NY  
White-Pickering, Mary Ann  
(n), Greenbelt, MD  
Wilcox, Phyllis (n),  
Albuquerque, NM  
Wilkins, Dorothy (r),  
Rochester, NY  
Wills, Thomas L. (n), Portland,  
OR  
Wilson, Christine Ann (n),  
Galena, OH  
Wilson, Nat W. (n), Seattle,  
WA  
Winter, Kristi G. (n), Portland,  
OR  
Wright, Terry R. (r), Wilson,  
NC  
Wyble, Rachel (n), Allison  
Park, PA  
Yesbeck, Nancy (n),  
Richmond, VA  
York, Jeffery B. (n), Valdese,  
NC  
Young, Tina R. (n),  
Hagerstown, MD  
Yount, Barbara P. (n), Fort  
Worth, TX  
Zwicker, Sally Ann (r),  
Cincinnati, OH

## "How to Apply for ASLTA Certification"

*Now Available On Videotape*

With the generous cooperation of DawnSignPress, ASLTA has produced a videotape titled, "How to Apply for ASLTA Certification." It uses ASL to explain clearly the procedures and requirements of the certification and evaluation system. For more information, or to order a copy, contact: Keith M. Cagle, ASLTA Vice President, Gardner-Webb College, Campus Box 283, Boiling Springs, NC 28017, cagle@hci.net.

# ASLTA CHAPTERS

## California ASLTA

Eric Scheir, President  
ESCHEIR@AOL.COM  
(310) 394-3433 TTY  
(310) 395-1419 FAX

## ASLTAC—Colorado

Jason Stewart, President  
Rachel Naiman, Vice President  
Karl Beyer, Secretary/Treasurer  
Tom Riggs, Public Relations  
Lynda Rimmell, Professional  
Development

## Chicagoland ASLTA

Bob Paul, President  
William Rainey Harper College  
1200 West Algonquin Road  
Palatine, ILL 60067-7393  
(847) 372-7873 TTY  
(847) 925-6048 FAX  
Barbara Fairwood, Vice President  
Gail Partridge, Secretary  
Amy Dixon Kolar, Treasurer

## Florida Chapter of ASLTA

Glenna Ashton, President  
19644 Carolina Circle  
Boca Raton, Florida 33434  
GLENNARA@AOL.COM  
Kim Marie Smith, Vice President  
Alyse Rasmussen, Secretary  
Marilyn Knetzer, Treasurer  
Mike Ernest, Editor

## Frederick ASLTA

Brian Brizendine, President  
David Ennis, Vice President  
Deb Myers, Secretary  
Joette Gasco, Treasurer  
Jackie Kanekuni,  
Professional Development Chair

## Greater New York ASLTA

Alec Naiman, President  
330 West 30th Street  
New York, New York 10001  
ANAIMAN@AOL.COM

Kim Hirschberger, Vice President  
Warren King, Treasurer  
Members at Large, Janice Buonicontri,  
and Michael Kaufer, Michael Russo  
Dorothy Cohler, Membership Director

## Hoosier ASLTA

Robert Canty, President  
4905 E. 72nd Street  
Indianapolis, IN 46250  
(317) 849-2344  
BCANTY@LQUEST.NET  
Ellen Marshall, Vice President  
Wendy Whiting, Treasurer  
Fred McBroom, Treasurer

## Kansas ASLTA

Nancy Eades, President  
17400 West 156th Terrace  
Olathe, Kansas 66062-6341

## Lilac Chapter of ASLTA

Colleen Pouliot, President  
P.O. Box 23853  
Rochester, New York 14692  
Fax (716) 475-6500  
CAPNSS@RIT.EDU  
Barbara Ray Holcomb, Vice President  
Leisa Boling, Secretary

## Michigan ASLTA

Janet Deschler, President  
6200 Elro Street  
Burton, MI 48509  
(810) 744-2817 TTY  
Brenda Cartwright, Vice President  
Marta Belsky, Secretary  
Shirley McKenzie, Treasurer

## Minnesota ASLTA

JaNahne McCready-Johnson, President  
12115 Dogwood St. NW  
Coon Rapids, MN 55448-2633  
(612) 757-1646 TTY  
Ann Bahl, Vice President  
Adeline Svenningsen, Secretary  
Virginia Ricci, Treasurer

## Nation's Capital ASLTA

Nancy Billingslea, President  
20 Samantha Court  
Owings Mills, MD 21136  
(410) 654-2241  
Lori Maynard, Vice President  
Rosalee Connor, Treasurer  
Rosemary Plummer-Strausler, Secretary  
Holly Roth, Professional Development  
Representatives: John Fenicle  
Dianne Lyles  
Sharon Matthew

## North Carolina Tar Heel ASLTA

Terry R. Wright, President  
P.O. Box 1013  
Wilson, NC 278941013  
TWRIGHT748@aol.com  
(919) 237-3892  
Keith M. Cagle, Vice President  
Christine Rudauskas, Secretary  
Lily Brown, Treasurer

## Texas Bluebonnet ASLTA

Carol Seeger, President  
2000 Magic Hill Drive  
Pflugerville, TX 78660-8175  
(512) 251-3254 TTY  
(512) 471-3841 TTY (w)  
Lisa Bosson, Vice President  
Jerry Hassell, Secretary  
Larry Schwarz, Treasurer

## Veditz Chapter of ASLTA

Patricia Beech, President  
5806 Heming Avenue  
Springfield, VA 22151-2716  
(703) 866-0797  
GAITHER@OASYS.DT.NAVY.MIL  
(301) 227-3398 TTY (w)  
(301) 227-3343 FAX (w)  
Adele Polk, Vice President  
Sandra Wise, Secretary  
Laurie Dowling, Treasurer  
Bill Ennis, Professional Development  
Cindy Burton, Jill Moebus, and Paula  
Yanke, Members at Large

*As of 12-22-96. Please send any updates and corrections to this list to Leslie Greer (see page 19 for contact information).*

