



# AMERICAN SIGN LANGUAGE TEACHERS ASSOCIATION



## ASLTA Exploring Partnerships

### A merger of organizations coming?

The Board is engaged in discussions with representatives from the ASL Round Table (ASLRT) and its Curriculum, Instruction, and Assessment (CIA) subcommittee to explore how both organizations can work together in pursuit of raising standards for all ASL learners, whether as a heritage / first language or in a world language / second language environment. Right now, we are in the discussions phase and hope to move towards developing a memorandum of understanding (MOU), which will outline specifically how ASLTA, ASLRT, and ASL-CIA will partner with each other.

#### Q1: What is ASLRT and ASL-CIA?

The ASLRT is an organization dedicated to promulgating best practices related to ASL instruction for deaf and hard of hearing learners in pre-K - 12 educational settings. ASLRT members are administrators from schools for the Deaf, ASL teachers, ASL specialists, bilingual specialists, and classroom teachers. **Continued next page**

### BOARD ELECTIONS COMING UP IN JUNE

Find out which positions are available and think about joining the ASLTA Board!

**PAGE 7**

### DEAF ART COMPETITION WINNERS

See the winning pieces from the Fall competition. Handwaves to all the competitors & winners!

**PAGES 10 & 11**

### ASLTA CERTIFICATION UPDATES

Everything you need to know about the new certification system & renewal procedures.

**PAGES 13 - 16**

### COUNTDOWN TO THE ASLTA CONFERENCE!

6 months to go before we're together again at our 9th National Conference in SLC!

**Early bird registration of \$300.00 ends January 31, 2017.**  
Register today!

#### Sneak Peek!

See some of the workshops scheduled for the conference!

**page 4**

#### Call For Volunteers

Want to develop national ASL standards?

**page 6**

#### Shop on Amazon?

Support ASLTA at the same time!

**page 8**

#### Membership Report

How is ASLTA doing?

**page 9**



The ASL-CIA is a subcommittee of ASLRT and focuses on the active development of curricular, instructional, and assessment materials for use in heritage / first language settings.

### Q2: Why now?

While ASLTA's mission is to promote ASL study in both heritage / first language and second language settings, the organization has traditionally been more focused on the needs of college-level instructors. Attempts to meet the unique needs of teaching ASL as a first language failed to gain much traction, so several years ago a group of like-minded individuals formed ASLRT as a separate organization. Timo Owens, the deceased former President of ASLTA, made re-uniting ASLTA and ASLRT an essential objective of his tenure. His successor, President Arlene Garcia, has continued Timo's lead in pushing ASLTA to meet the needs of all ASL instructors, particularly at the Pre-K-12 levels in both first and second language settings. Thus, the ASLTA Board made a strong effort to reach out to ASLRT and form a stronger relationship. Both organizations agree that we are stronger together than divided!

### Q3: How will this strengthen ASLTA?

By centralizing expertise on the teaching of ASL, ASLTA can better position itself as a leader and resource at the national level. Bringing together ASL professionals from a wide variety of specializations facilitates the exchange of ideas, the sharing of expertise among different segments of ASLTA's membership base, and improve credibility and professionalism in the ASL field and beyond.

### Q4: How will this improve ASLTA's mission?

ASLTA recognizes the need to ensure our pre-K - 12 grade ASL teachers are supported through the organization, and is committing to meeting ASLTA's mission to *"perpetuate, preserve, and promote American Sign Language (ASL) and Deaf Culture*

*through excellence in teaching. This includes teaching ASL as a heritage or first language, as a second language, and as part of Deaf Studies."*

### Q4: How will ASLTA demonstrate support to heritage / first language and world language PreK - 12 ASL teachers?

ASLTA is committed to expanding the type of presentations and workshops available at the ASLTA conferences, to better meet the needs of our membership. You can expect to see more topics

**“Together, ASLTA and ASLRT can be a strong, healthy organization capable of meeting the needs of all ASL instructors in heritage language and world language settings, from pre-kindergarten to college!”**

**Arlene Garcia, ASLTA President**

geared to particular interests, such as how to manage a high school classroom, or learning about developmental benchmarks for ASL as a first language learners, for example.

### Q5: Is this partnership between ASLRT and ASLTA a done deal?

ASLTA and ASLRT have committed to explore ways to integrate ASLRT programs and members into ASLTA. There is much work ahead and many more discussions to be held, but this is an exciting opportunity for ASLTA to grow and better meet the needs of our current membership as well as attracting new membership. ASLTA members will be kept informed as each new development occurs.



Have questions or comments about ASLTA's potential partnership with ASLRT? Contact Arlene Gunderson, ASLTA President ([president@aslta.org](mailto:president@aslta.org))

# IT'S TIME TO REGISTER!

**Save on registration!** Early Bird.... \$300.00 (deadline: January 31) Late..... \$425.00 (deadline: June 15)  
Regular..... \$375.00 (deadline: May 31) At the Door.. \$450.00

# ASLTA



**JUNE 28 - JULY 1, 2017**

# ASL ELEVATED

ASLTA 9th Biennial National Professional  
Development Conference

Salt Lake Marriott Downtown at City Creek



AMERICAN SIGN LANGUAGE  
TEACHERS ASSOCIATION





The organizing committee of the 2017 ASLTA Professional Development Conference is pleased to give you a sneak peek at just some of the many workshops and presentations appearing at this summer's conference. We have a great line-up of fantastic presentations for you, so register now! See you in Salt Lake City!

Need help asking your principal or chair for support to attend the ASLTA conference? The next page has a sample letter you might want to use to as part of your request. Customize it as needed, and remember: The strongest point you can make is to explain how attending the conference will make you a better teacher - and show which workshops will help! List specific workshops that will be most beneficial to your classroom and your school.

## TO DO!!

- Register for conference before Jan 31 (great price at \$300!!)
- reserve hotel room
- get tickets! train? plane? road trip?
- find out which friends & colleagues are going. Be great to catch up!

## DON'T FORGET!!

- Ask principal to support going to ASLTA
- Revise the sample letter or make my own to explain the benefits of me going to the ASLTA conference

## ASL ELEVATED

JUNE 28 - JULY 1, 2017

of Stories with Handshape Constraints  
Deaf Space and Service Learning  
Digital Innovation Elevates New Zealand  
in the Higher Ed Field: Best Practices  
Interactive Classroom Activities  
COURSE, ME DEVELOP ONLINE ME?  
tures and Informational Videotexts  
sework Meets Practice in the Lab: T  
Canvas: Maximizing ASL instruction  
ave you Kahoot or Pear Deck Tod  
Top Ten Misconceptions We Want  
Appsolutely of ASL

Are you going to the ASLTA conference? Let us know! Post on our Facebook page that you're going, or better yet: Make a video saying that you're going to be there in Salt Lake City. Let everybody know where you're going and what the ASLTA conference means to you!

## **SAMPLE LETTER: Professional Development Request to Attend ASLTA 2017 National Conference**

To: [Your principal / your chair's name]

From: [Your name]

Date: [Insert date]

Subject: Request to Attend American Sign Language Teachers Association Conference

I am requesting support to attend the American Sign Language Teachers Association (ASLTA) national professional development conference, taking place June 28 - July 1, 2017, in Salt Lake City, Utah.

ASLTA is the only professional association for ASL teachers across the country, and hosts one conference every other year. This conference offers hands-on workshops, practical solutions to everyday classroom challenges, and cutting-edge technology applications for teachers, offered by the field's most noted and recognized educators. I anticipate enhancing my skill sets in pedagogy, technology, proficiency-driven activities, curriculum mapping, and more.

Attending the national conference is a significant investment in time and resources, but an invaluable one. Since the ASL teaching field is so small, very limited opportunities exist in our local area and state. Unlike my spoken-language colleagues who have a comprehensive network of quality professional development opportunities, ASL teachers in our area have to make do with limited offerings by local teachers. The quality of presentations, the breadth of topics, and the experience of the presenters simply cannot be replicated or replaced nearby. I hope you'll recognize that the national ASLTA conference is a unique opportunity for ASL teachers and support my request.

Specifically, attending the national ASLTA conference will increase my classroom effectiveness and professional learning objectives. I plan to attend the following sessions to improve my skill sets in these areas:  
[List the specific sessions you want to attend]

The knowledge and skills I will acquire will be useful to my classroom and contributions to the school community:

[List any school initiatives you see may be applicable to ASLTA sessions]

Please feel free to review the full list of conference topics at [www.aslta.org](http://www.aslta.org). Perhaps there are some topics you suggest I attend?

In terms of costs, the early bird registration of \$300.00 includes all educational sessions, lectures, keynote addresses, access to the exhibitor's hall, evening activities, and receptions. It also provides access to over 300 of my professional peers and opportunities to network with colleagues and presenters.

Early bird registration (until January 31, 2017): \$300.00

Regular registration (until May 31, 2017): \$375.00

Late registration (until June 15): \$425.00

At the Door: \$450.00

Transportation: [insert cost]

Hotel: [insert cost]

The total cost for me to attend the ASLTA conference will be: [insert amount]

Thank you for considering supporting my attendance at this important professional conference.

Regards,  
[Your name]



AMERICAN SIGN LANGUAGE  
TEACHERS ASSOCIATION



# ASLTA REPRESENTED AT ACTFL CONFERENCE

Board members Brenda Schertz (Chapters Affiliate Chair) and Christine Multra Kraft (Professional Development Chair) attended the recent American Council on the Teaching of Foreign Languages (ACTFL) conference in Boston, on November 17-20. A record 8,500 attendees were present, with teachers of 63 different languages at all levels, program administrators, and Board representatives of various state associations and national language groups.



Photo courtesy of Robyn J. Marcak  
Great to see other ASL instructors at ACTFL!

## What does ACTFL do for ASLTA?

ASLTA has worked hard and successfully lobbied to have ACTFL recognize ASL, which influences decisions and policies made by state departments of Education, school districts, and schools across the country. ACTFL has committed to ensuring ASL is promoted, defended, and included in all ACTFL endeavors on the same level as spoken languages. ASL can no longer be overlooked by other languages!

Christine represented ASLTA at the annual Assembly of Delegates, for a full-day meeting and training. There, delegates collaborated to establish goals to combat issues affecting most American world language teaching communities: State and national advocacy for language classes; teacher certification issues; growing and maintaining effective professional support organizations; recruitment / retention of qualified language teachers; and the current social-political climate of our country related to the language teaching field.

Workshops at the conference covered a full range of language teaching and research. Hands waving to Dr. Jason Listman for presenting on using a first language to teach a second. The crowded exhibit hall was full of teaching resources including one familiar face: GoReact!

ASL remains the third most popular world language taught in the USA, but out of over 1,000 workshops at ACTFL, only 4 were related to teaching ASL. ACTFL conference organizers are very eager for this number to increase. The call for papers for the next ACTFL conference in Nashville, Tennessee has a deadline of

January 13, 2017. Consider submitting a presentation proposal to share your expertise in teaching ASL or conducting research!

Also, from nominated regional runner-ups, ACTFL selects a "Teacher of the Year" at the annual conference. Know any great ASL teacher? Work with your state ACTFL-affiliated organizations to submit their name for ACTFL Teacher of the Year!

Christine also attended the Standards Collaboration Board (SCB) meeting during the ACTFL conference. This board is responsible for updating the ACTFL standards for learning world languages and is working with about 20 different language organizations. ASLTA needs to update our ASL standards to reflect newly-revised ACTFL standards. The SCB is supporting ASLTA's effort to meet the new competencies, and the ASL Standards committee is looking forward to the project.



If you'd like to work on updating the national ASL Standards, contact Dr. Jason E. Zinza, chair of ASLTA's ASL Standards committee. The committee is looking for 2-3 qualified ASL teachers who have in-depth understanding of ACTFL's 5 C's and proficiency benchmarks. Send an email to [aslhs@asлта.org](mailto:aslhs@asлта.org) to schedule a time to discuss this opportunity!



Get involved with running ASLTA!



# ASLTA BOARD ELECTIONS TO BE HELD AT THE CONFERENCE

The following Board positions will be filled by general election at the ASLTA conference in Salt Lake City, in person and by online voting.

- **President (end of term)**
- **Secretary (vacant due to resignation)**

-----

**The incoming President will need to appoint:**

- **Professional Development Chair**
- **Treasurer**

Have questions about the nomination and / or election process? Contact ASLTA Vice-President, Keri Brooks, at [vicepresident@aslta.org](mailto:vicepresident@aslta.org)

Nominations may be made by any voting member of ASLTA, provided the nomination is accompanied by 1) Biographical data describing the nominee's qualifications for the position, and 2) The signature of the person being nominated.

POSITION	RESPONSIBILITIES	QUALIFICATIONS
<b>President</b>	The President presides at all meetings; is responsible for oversight of all Board duties; coordinates all Board activities and meetings; prepares meeting agendas; appoints committee chairs; serves as the primary liaison with external organizations.	Must have ASLTA Professional / Master level certification. Must be an ASLTA member in good standing for at least two years prior to election.
<b>Secretary</b>	The Secretary is responsible to keep minutes of all meetings; creates the ASLTA newsletter and eblast notices to membership; and additional duties may be assigned by the Board.	Must have ASLTA certification. Must be an ASLTA member in good standing for at least two years prior to election.
<b>Professional Development Chair</b>	The Professional Development chair is responsible to coordinate all aspects of professional development activities for ASLTA, including: Conference planning, webinars, and CEUs.	Must have ASLTA certification. Must be an ASLTA member in good standing for at least two years prior to election.
<b>Treasurer</b>	The Treasurer oversees all financial transactions; maintains accurate financial records; prepares financial reports for each Board meeting. Also maintains accurate membership records; additional duties may be assigned by the Board.	Must have ASLTA certification. Must be an ASLTA member in good standing for at least two years prior to election. Familiarity with IRS 501(c)(3) requirements highly desired.



# MEMBER SPOTLIGHT

## Kashandra Ball



Lives in: **Dallas, Texas**

Teaches: **High school**

Courses taught: **ASL 1, 2, 3**

Teaching experience: **12 years high school, 5 years at the Jean Massieu Academy-Arlington, occasionally teaches at the community college level.**

Going to the ASLTA conference? **Yes!**

*ASLTA caught up with ASL teacher Kashandra Ball and she shared some good laughs about the trials and tribulations of being Deaf and teaching ASL to high schoolers. Highlights of our conversation:*

**ASLTA:** Tell me a bit about your background. Who is Kashandra Ball?

**KB:** I'm Deaf and a Texan. Do I need to say anything more?

**ASLTA:** What's your Deaf experience been like?

**KB:** When my mom found out I was Deaf, she immediately began learning ASL and eventually began working as an interpreter. I was lucky in that I always had access to language and communication growing up. She was so committed to my education that she drove me every day 1.5 hours each way to school in the city so I could have Deaf peers.

**ASLTA:** Switching gears now, how do you describe your teaching style?

**KB:** I'm very hands-on in terms of activities, so I'm always looking for ways to keep students engaged. I'm a strong proponent of full immersion, and I make sure my classroom is student-centered.

**ASLTA:** Any tips to teachers about maintaining a voice-off classroom?

## SUPPORT ASLTA BY SHOPPING ON AMAZON.COM!



Amazon has donated more than 35 million dollars to thousands of organizations and charities through the Amazon Smile program (as of November 30, 2016).

Did you know you can support ASLTA without spending any extra money? You can if you're an amazon.com shopper! It helps even if you only occasionally use Amazon to shop online!

How to get started:

1. Log out of amazon.com if you're logged in, and go to http://smile.amazon.com
2. Type in American Sign Language Teachers Association
3. Select us! You know you want to!
4. Hit "Start Shopping"
5. Now the important part: Bookmark this URL as your starting place every time you visit Amazon to shop.
6. You should see at the top of your window when you are logged in something like "You are Supporting the American Sign Language Teachers Association"
7. Go wild... Shop, till you drop! ASLTA will earn 0.5% of your purchase. Be assured, ASLTA has no way of knowing what you buy. It is completely private. An easy, painless way to support ASLTA.

**DO IT TODAY! And thank you for your support!**

**KB:** Keep them busy! Teach students vocabulary they use in their daily lives so they don't have to use spoken English.

**ASLTA:** What do you do to keep current in your teaching?

**KB:** I'm a big fan of technology. I love exploring ways to use technology, like trying new software or apps. Right now I'm doing a lot of podcasting in ASL and using EdPuzzle.

**ASLTA:** What advice do you have for high school teachers that has worked in your classroom?

**KB:** It's all about maintaining routines. Don't stray from your routine and students will know what to expect. Otherwise, it'll be a disaster. And, don't try to be their friend. You're a teacher, so model language and teach culture, and you'll do fine!

On why Kashandra is going to the ASLTA conference: **"I want to see and learn different ways how I can challenge and improve my teaching from people at the national level, from all over the country."**



# MEMBERSHIP REPORT

Our members may have noticed that this year for the first time ASLTA has sent membership dues reminders starting in August. Our membership cycle is September 1 through August 31. This coincides closely with the school year. We sent three reminders in early August, September and October to all members and a final reminder in early November to Certified members only. Sending these reminders has been made possible by the upgrades to our membership database that were done in conjunction with our updated website project.

## Current Membership (as of early Nov.)

Membership Type	Member Count
Supporting Individual	58
Associate Individual	285
Certified Individual	257
<b>Total Individual Members</b>	<b>600</b>
Institutional	9
ASLTA Chapters	3
ASLHS Chapters	100
<b>Total Organizational Members</b>	<b>112</b>

The below chart shows the number of “expired members.” These represent memberships in each category that expired in 2014/15 or in prior years.

## Expired Memberships (as of early Nov.)

Membership Type	Member Count
Supporting Individual	97
Associate Individual	434
Certified Individual	98
<b>Total Individual Members</b>	<b>629</b>
Institutional	19
ASLTA Chapters	24
ASLHS Chapters	86
<b>Total Organizational Members</b>	<b>129</b>

Certainly we would prefer to see these numbers much higher. There are literally thousands of ASL, Deaf Studies, and related professionals nationwide. Our ASLTA Facebook page has over 3,000 followers. We still have some work to do to expand our membership and strengthen our organization. Our “grace period” for renewing memberships is from September 1 - November 30. The chart below shows the number of persons who were members last year in 2015/2016 that have not yet renewed their membership for 2016/2017.

## Have Not Yet Renewed Membership

Membership Type	Member Count
Supporting Individual	25
Associate Individual	257
Certified Individual	49
<b>Total Individual Members</b>	<b>331</b>
Institutional	16
ASLTA Chapters	9
ASLHS Chapters	113
<b>Total Organizational Members</b>	<b>138</b>

Won't you help us? Recruit your fellow ASL and / or Deaf Studies teachers and related professionals. This is our National Professional Development Conference year. If you have attended our conference in the past, then you know what a great opportunity it is for professional development and networking. Recruit a member and have them join you in attending the conference. Please visit [www.aslta.org](http://www.aslta.org) for membership and conference information.

# WINNERS OF THE ASL HONOR SOCIETY'S DEAF ART COMPETITION

Each fall, the ASL Honor Society sponsors a national Deaf Art competition with cash prizes, in honor of beloved Deaf artist, Chuck Baird. The mission of the competition is to expose students to the artists, genres, and visual expressions of Deaf culture as expressed through art. Students at all levels of ASL instruction are encouraged to participate.



The ASL Honor Society expresses its gratitude and appreciation to Matt and Kay Daigle for allowing their artwork to be reproduced by students, and for serving as judges in the competition. Check out the Daigle's website: [www.mdaigletoons.com](http://www.mdaigletoons.com)

## 2016 COMPETITION FAST FACTS

- Featured art was the cartoon artwork of Matt and Kay Daigle.
- Over 200 entries from across the country were submitted.
- College, university, and high school students participated.
- Winners were selected by Matt and Kay Daigle.

Category 1: Create Original Artwork Inspired by Matt & Kay Daigle's Work

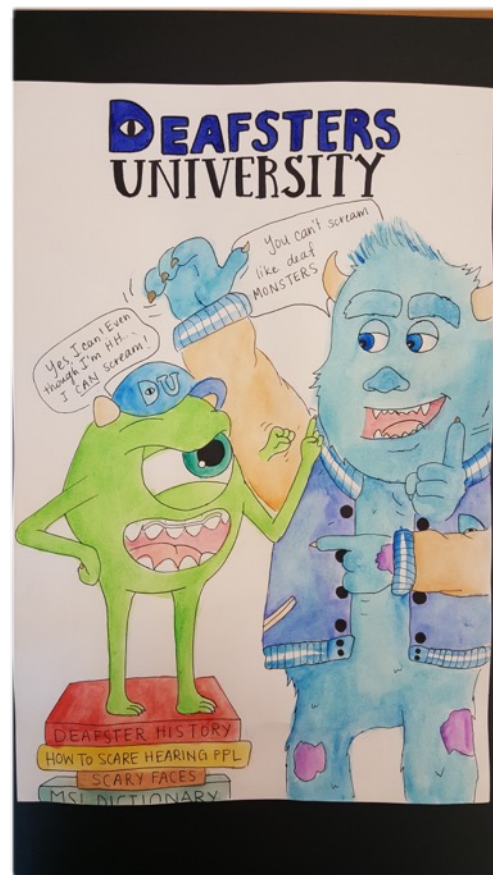
"We were highly impressed by the entries. It was so challenging to vote for all these exceptionally talented students."  
- Matt and Kay Daigle

SECOND PLACE  
"Suppression of Sign"  
by Pa Lee



THIRD PLACE  
"Gorillaz"  
by Martene Grumblis

FIRST PLACE  
"Deafsters University"  
by Ira Colendrino







**FIRST PLACE**  
**"Fast & Furious Fingerspelling"**  
 by Pamela Chapman

Category 2: Reproduce An Original Artwork by Matt & Kay Daigle



**SECOND PLACE**  
**"Deaf Jack-o-Lanterns"**  
 by Casadee Subart



**THIRD PLACE (tied)**  
**"Gnomeo and Juliet"**  
 by Corrina Vue



**THIRD PLACE (tied)**  
**"Deaf Wizard"**  
 by Gussie Ford

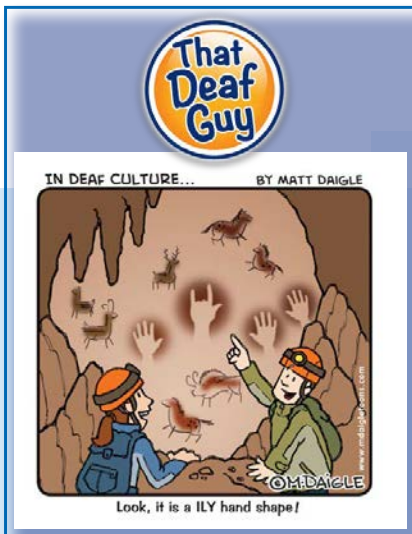
"[The ASLHS art competition] gives our student members the unique opportunity to study and produce or reproduce Deaf Art. [Students] have the opportunity to delve into profound, comical, and sometimes satirical portrayals of the Deaf Experience and by doing so develop a better understanding of the people who share American Sign Language and Deaf cultural values. This is the core objective of sharing American Sign Language with the larger culture." - Anna Mayra, competitions assistant



# GREAT NEWS!

**THE ASL HONOR SOCIETY** is sponsoring **TWO** competitions for the upcoming school year. Why should your students participate?

- ▶ Helps them apply what they learn in the classroom in a fun, exciting way
- ▶ Opportunity to win cash prizes!
- ▶ Participants receive additional points if they apply for the ASL Scholarship



## FALL SEMESTER: The Chuck Baird Memorial Deaf Art Competition

Entry deadline: November 12, 2016

### CATEGORIES:

- 1) Reproduction: Painting or drawing of a student's copy of the 'ILY' cartoon by Kay Daigle.
- 2) Original Creation: Student creates a cartoon reflecting their understanding or perspective of an element of Deaf life, history, culture, or language.

*Students can enter artwork using watercolor, colored pencils, charcoal, oil, acrylics, pencil sketch, and paint.*



## SPRING SEMESTER: The ASL Literature Competition: Drum Songs

Entry deadline: April 7, 2017

### CATEGORIES:

- 1) Recitation:  
Students perform the Bison School Drum Song.
- 2) Original Creation  
Students create an original rhythm-based school drum song.

For entry forms and guidelines for both competitions, visit the ASLHS website:  
[www.aslhonorsociety.org](http://www.aslhonorsociety.org)



Also find us on Facebook! [facebook.com/ASLHonorSociety](https://facebook.com/ASLHonorSociety)

# WHY JOIN THE ASL HONOR SOCIETY?

## THE ASLHS is just like an ASL club on campus.

Easy to manage, doesn't take any extra work, but best of all, it opens the door to a lot of benefits:

- ▶ **ASL Scholarships.** We provide the only nation-wide scholarships for students majoring or minoring in ASL, Deaf Studies, Deaf Education, and Interpreter Education. Help your students pay for school!
- ▶ **Teacher Grants.** The ASLHS provides grants to ASL teachers that can be used for any educational-related activity. Want to pay for guest speakers? No problem. Want to purchase DVDs? No problem. Want to take your students on a field trip? No problem!
- ▶ **Student Competitions.** Your students can participate in the annual ASL Literature competition and annual Chuck Baird Memorial Deaf Art competition. Help them apply the concepts and skills you teach in the classroom! Cash prizes are awarded.
- ▶ **Graduation Materials.** Recognize outstanding students with honor cords, the Alice Cogswell Medal, or the Laurent Clerc Medal. Encourage students to work hard and earn praise!



## DON'T LET YOUR STUDENTS GET LEFT BEHIND! JOIN TODAY!

American Sign Language Honor Society



High School • College • University

Visit our website or find us on Facebook!

[www.aslhonorsociety.org](http://www.aslhonorsociety.org)  
[facebook.com/ASLHonorSociety](https://facebook.com/ASLHonorSociety)

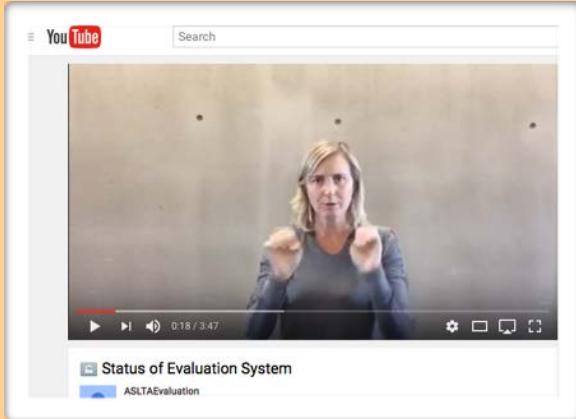




# ASLTA CERTIFICATION UPDATES

## Q & A About the Revised Certification System

### •What is the current status of the new system?



View the status update here:

[www.youtube.com/watch?v=NnyilsNybf8](http://www.youtube.com/watch?v=NnyilsNybf8)

### •When does the new certification system go into effect?

Not until the certification portion of the ASLTA website is complete. When it is ready, all Qualified and Professional candidates and certified individuals will be transferred into the new system.

### •What is required to apply for the Certified and Master levels?

Please see the graphics on the next page of this newsletter.

### •I have ASLTA's Qualified certification. What happens to me?

The former "Qualified" certification has been renamed CERTIFIED. Your renewal period will occur every four years.

### •I have ASLTA's Professional certification. What happens to me?

The former "Professional" certification has been renamed MASTER. Your renewal period will occur every eight years.

### •When do the renewal periods begin?

Your renewal timeline is based on when you received your first ASLTA certification. The clock does not reset once you are transitioned to the updated certification.

## UNDER CONSTRUCTION

We are currently configuring the new ASLTA website to accommodate the revised certification system. We recognize that this is taking longer than anticipated, and appreciate your patience during this transition phase.

We will make regular announcements as more information becomes available. We anticipate to have the website ready soon.

## COMMON QUESTION ANSWERED: WHAT IS THE RENEWAL PROCESS FOR THE REVISED ASLTA CERTIFICATION?

Many ASLTA members have asked about the renewal process for the revised ASLTA certification system. A new chart on the next page is intended to help members understand the renewal system for CERTIFIED and MASTER certifications.

For questions or comments on the revised certification, contact Dr. Amy June Rowley at [evaluation@aslta.org](mailto:evaluation@aslta.org).



Seeking comments from ASLTA-certified members! What advice or suggestions would you give someone who is unsure about pursuing ASLTA certification? How would you encourage someone to go for it? How has ASLTA certification made a difference for you personally and / or professionally? Let us know! Your comments will appear in the next newsletter!

Send your comments to [aslhs@aslta.org](mailto:aslhs@aslta.org)!



# What is the revised renewal process for ASLTA certified members?

ASLTA's revised certification system also has an updated renewal process that recognizes the importance of successful collaboration and sharing of knowledge and skills with the field, particularly from our Master certified members.

**Want ASLTA certification?**  
 You must be an ASLTA member  
 All ASLTA members are encouraged to pursue ASLTA certification

Did you earn the **MASTER LEVEL** certification from ASLTA?  
 You must maintain your ASLTA membership every year or lose your certification, period.

Did you earn the **CERTIFIED LEVEL** certification from ASLTA?  
 You must maintain your ASLTA membership every year or lose your certification, period.

You must renew your certification **EVERY 8 YEARS**

Only one extension lasting one year allowed. A fee is charged.

Only one extension lasting one year allowed. A fee is charged.

You must renew your certification **EVERY 4 YEARS**

How do I renew my **MASTER LEVEL** certification?  
 You must document contributions to the field **every year**.  
 You must document **8 years** of contributions to the field that include:

- **Publications**
- **Conference Presentations**
- **Mentoring**
- **Service on the Board of ASL-related organizations**
- **Community Advocacy**
- **ASL/Deaf Community Service**

ASLTA-related contribution recommended.

Professional development must be ASL-related.

At least **one** national-level contribution related to ASL is expected **every two years**.  
 Presenting at ASLTA, CIT, RID, ASLRT, WFD, TISLR, to name a few options, meets this requirement.

How do I renew my **CERTIFIED LEVEL** certification?  
 You must document **40 hours** of professional development or contributions to the field.

Contributions to the field means:

- **Service** (committee work, board involvement, etc.)
- **Research** (presentations, publications, etc)
- **Teaching** (mentoring, etc).

## Requirements for Certified Level Certification:

### FOR PORTFOLIO OF TEACHING EXCELLENCE

**Candidates need to submit:**

- 1 Teaching Philosophy Video which includes:
  - o Teaching Methods
  - o Multiple teaching strategies
  - o Examples of how inclusive classroom practices are conducted
- 2 Teaching Demonstration/Lesson Plan/Materials Video for a beginning or intermediate level course which includes:

Teaching Demonstration	Written Lesson Plan	Materials
Grammatical/linguistic component	Vocabulary/semantics	All materials for the lesson must be included and the lesson must be the same as the one being demonstrated
Cultural component	Activities	
Evidence of Multiple teaching strategies	SLOs/Outcomes/Objectives	
Use of communication behaviors, classroom layout and other Deaf Space techniques		
Creative use of Technology		

- 3 Assessment Tools/Materials (Video and Written)
  - o An example of an assignment and any grading materials for the assignment
  - o An example of a quiz and any grading material for the quiz
  - o An example of an exam and any grading material for the exam
  - o Video should explain how each of these are used and any objectives or goals measured by each assessment tool. Overall course goals should be explained as well.
- 4 Explanation of Advocacy situation (scenario will be provided)

### FOR THE DOCUMENTATION OF EXPERIENCE

**Candidates need to submit:**

- 1 Curriculum Vitae (CV) which includes 4 parts:
  - o Educational background
  - o Teaching background
  - o Professional Development evidence & hours
  - o Deaf Community service
- 2 Transcripts/Degrees (Must have BA or higher)
- 3 ASLPI score of 3+ or higher, SLPI: ASL rating of Advanced Plus or higher or other proficiency interviews that may be approved in the future.

### FOR REQUIRED COURSEWORK, CANDIDATES MUST HAVE COMPLETED THE FOLLOWING COURSEWORK: (3 CREDIT HOURS EACH):

- ASL Literature
- ASL Linguistics
- Deaf Culture/Deaf Community

Candidates without formal coursework evidence can be interviewed to determine if candidate has sufficient knowledge of specific field in lieu of coursework. Each course not completed entails a separate interview. Interviews will be at additional cost to the candidate.

**CONTACT INFORMATION:**  
[EVALUATION@ASLTA.ORG](mailto:EVALUATION@ASLTA.ORG)



## Requirements for Master Level Certification:

### FOR PORTFOLIO OF TEACHING EXCELLENCE

#### Candidates need to submit:

- 1 Teaching Philosophy Video which includes:
  - o Teaching Methods
  - o Evidence of how you use multiple teaching strategies
  - o Examples of how inclusive classroom practices are conducted
- 2 Syllabus developed for an advanced (3 year or higher course) or specialized level course which was developed by the candidate.
- 3 Teaching Demonstration/Lesson Plan/Materials Video for an advanced or specialized level course which includes:

Teaching Demonstration	Written Lesson Plan	Materials
Grammatical/linguistic component	Vocabulary/semantics	All materials for the lesson must be included and the lesson must be the same as the one being demonstrated
Cultural component	Activities	
Evidence of Multiple teaching strategies	SLOs/Outcomes/Objectives	
Use of communication behaviors, classroom layout and other Deaf Space techniques		
Creative use of Technology		

- 4 Assessment Tools/Materials (Video and Written)
  - o An example of an assignment and any grading materials for the assignment
  - o An example of a quiz and any grading material for the quiz
  - o An example of an exam and any grading material for the exam
  - o Video should explain how each of these are used and any objectives or goals measured by each assessment tool. Overall course goals should be explained as well.

**CONTACT INFORMATION:**  
[EVALUATION@ASLTA.ORG](mailto:EVALUATION@ASLTA.ORG)

### FOR THE DOCUMENTATION OF EXPERIENCE

#### Candidates need to submit:

- 1 Curriculum Vitae (CV) which includes 4 parts:
  - o Educational background | Teaching background | Professional Development evidence & hours | Deaf Community service
- 2 Transcripts/Degrees (Must have BA or higher)
- 3 1080+ hours of paid teaching experience (4 years full time)
- 4 ASLPI score of 4 or higher, SLPI: ASL rating of Superior or higher or other proficiency interviews that may be approved in the future

### FOR REQUIRED COURSEWORK, CANDIDATES MUST HAVE COMPLETED THE FOLLOWING COURSEWORK (3 credit hours each):

- ASL Literature
- ASL Linguistics
- Deaf Culture/Deaf Community
- Teaching Methods (ASL or Foreign Language)
- Assessment Tools
- Curriculum Development OR Language Acquisition

### 5 Evidence of contribution to the field such as:

- o Publications | Conference presentations | Mentoring | Service on Board of ASL related organization | Community advocacy | ASL/Deaf Community service

### 6 Explanation of Advocacy situation (scenario will be provided)

- o Shows evidence of critical thinking skills | Utilizes appropriate resources | Cites relevant research

### 7 Select a topic from Teaching Methods related to ASL or Foreign Languages, Assessment, Curriculum Development OR Language Acquisition and develop a mini presentation of about 30 minutes which includes:

- o English (200 words) and ASL Abstract (2 minutes) | Outline or PowerPoint | Bibliography of video or written resources

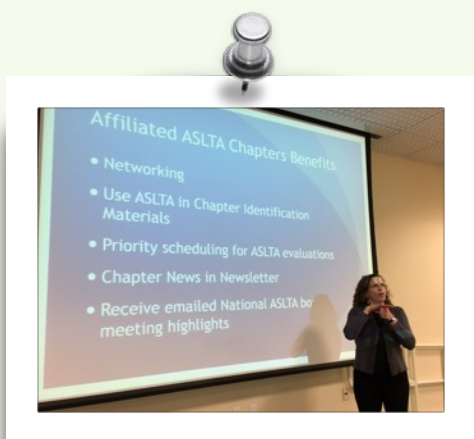
Candidates without formal coursework evidence can be interviewed to determine if candidate has sufficient knowledge of specific field in lieu of coursework. Each course not completed entails a separate interview. Interviews will be at additional cost to the candidate. This option only applies to candidates who are applying for the Master Certification after having attained the Certified level. After portfolio is completed, candidate will be contacted for a required follow up interview to focus on 3 parts: discussion about the candidate's mini presentation (from #7) and to inquire about professional development and how feedback is collected and delivered.



# ASLTA CHAPTERS INFO

It's been an exciting year for ASLTA chapters, with several being revitalized with new leadership and new chapters being formed. In addition, chapters are being supported more than ever before through the new regional reps. Chapters are for you, so get involved with your local group or better yet, find other ASL teachers and establish a new one near you!

**Important Reminder: All ASLTA chapters are required to remain current in their ASLTA dues. More than a few chapters are delinquent, so get those dues in quickly!**



Chapters Coordinator Brenda Schertz gave a presentation to help kick off the relaunching of the Greater Rochester chapter in November.



Guillaume Chastel explained linguistic parallels between ASL and French Sign Language (LSF). Just one of many topics ASL teachers across the country would find interesting and beneficial, so start planning a workshop now in your area!



The Florida chapter of ASLTA (known as FASLTA) held their **28th** annual statewide conference this fall. Way to go, FASLTA!

## Help Us Improve

ASLTA wants to know your thoughts on the existing ASLTA chapter structure. What do you like about ASLTA chapters? What do you not like? What would you change? Do you have any thoughts about how ASLTA can support ASL teachers not only online but in person? We want to know what you think!

Send your feedback to [chapters@aslta.org](mailto:chapters@aslta.org).

## MARK YOUR CALENDARS!

North Carolina ASLTA will have their mini-conference on March 31-April 1, 2017. Check [www.ncaslta.org](http://www.ncaslta.org) for more information.

ASLTA Southern California hosting a workshop on January 27-29, 2017. See [www.asltasoca.com](http://www.asltasoca.com) or the American Sign Language Teacher Association of Los Angeles Facebook page for more info.

ASLTA Colorado hosting a workshop on May 18-20, 2017. Contact [coloradoASLTA@gmail.com](mailto:coloradoASLTA@gmail.com) or visit their ASLTAC Facebook page for more info.

Is your ASLTA chapter having an event? Let us know about it and help you advertise. We'd love to see pictures, too! Send to [chapters@aslta.org](mailto:chapters@aslta.org).

# THANK YOU

ASLTA deeply appreciates every amount of financial support given by our donors and sponsors. ASLTA members have identified a long wish list of projects and advocacy needs for the organization to address - ranging from skill-building webinars, working with states on ASL certification issues, developing position papers, and more - and all of this valuable work requires funding. ASLTA cannot do this alone, so we are thankful and grateful to each one of you who supports our work. Please see the next page for sponsorship opportunities.



**Platinum  
Sponsor**

Veditz|Exemplars

[www.veditz.org](http://www.veditz.org)

## Donations from ASLTA Allies

Estate of Timo Owens.....	\$5,000.00
Sign Media, Inc. ....	\$2,000.00
Sorenson Communications..	\$2,000.00
Individuals.....	\$2,004.65

The financial support from our donors and sponsors has been used to develop the new ASLTA website and for the Board to have a face-to-face meeting. The donation from the estate of Timo Owens has been dedicated to a fund to support the teaching of ASL to Deaf children.



# Annual Business Sponsorship Opportunities (For Profit Groups)

Platinum Sponsor

## \$10,000 + annual contribution:

- Full page on ASLTA website for logo, product descriptions, sponsor's commitment to ASLTA and promotion of the mission of the ASLTA
- Two focused eBlasts per year
- Booth at biennial professional development conference
- Banner displayed at biennial professional development conference
- Four complimentary combo registrations at professional development conference
- Full page in NPDC Program Book
- Full page ad in four Newsletters/year
- Listed as Platinum sponsor in all Newsletters
- One Platinum contact receives all eBlasts and Newsletters
- Reciprocal links on websites

Gold Sponsor

## \$5,000 + annual contribution:

- Half page on ASLTA website for logo, product descriptions, sponsor's commitment to ASLTA and promotion of the mission of the ASLTA
- One focused eBlasts per year
- Booth at biennial professional development conference
- Banner displayed at biennial professional development conference
- Two complimentary combo registrations at conference
- Half page in NPDC Program Book
- Half page ad in four Newsletters/year
- Listed as Gold sponsor in two Newsletters
- One contact receives all eBlasts and Newsletters
- Reciprocal links on websites

## \$2,500 + annual contribution:

- Quarter page on ASLTA website for logo, product descriptions, sponsor's commitment to ASLTA and promotion of the mission of the ASLTA
- Banner displayed at biennial professional development conference
- Quarter page in NPDC Program Book
- Quarter page ad in one Newsletters/year
- Listed as Silver Sponsor of the ASLTA in all Newsletters
- One contact receives all eBlasts and Newsletters
- Reciprocal links on websites

Silver Sponsor

Bronze Sponsor

## \$1,000 + annual contribution:

- Logo and link to business website
- Listed as Bronze Sponsor of the ASLTA in all Newsletters
- One contact receives all eBlasts and Newsletters
- Reciprocal links on websites

**Note:** ASLTA reserves the right to review and approve all content from For Profit and Not for Profit sponsors to ensure content complies with ASLTA's 501(c)3 status.

Whether you celebrate...

Epiphany

Milad un Nabi

Omisoka

Yule

Kwanzaa

Hanukkah

Christmas

Mahayana New Year

Boxing Day

Rizal Day

Winter Solstice

Fiesta of Our Lady of Guadalupe

Makar Sankranti

.... or nothing at all,

**ASLTA wishes you**

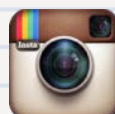
**Seasons Greetings**

**and Happy New Year!**

**FOLLOW US**



FACEBOOK.COM/ASLTA



@ASLTA



@NATIONALASLTA