

ASLTA News
Spring
Volume 2012, No. 1



HOLD THE PRESSES!

It's official! ASLTA is now a federally recognized 501(c)(3) non-profit charity!

ASLTA NEWS RUNNING LATE

The editor (that's me, Alysse) extends her sincerest apologies for the lateness of this Spring issue of the ASLTA News. However, your patience and understanding allowed me to successfully defend my dissertation "Assessing Interpreter Intercultural Sensitivity" at Union Institute & University. (Gulp! Hope I don't jinx anything -- I've still got to go through a Style & Form Review before they sign off on the diploma. LOL.)



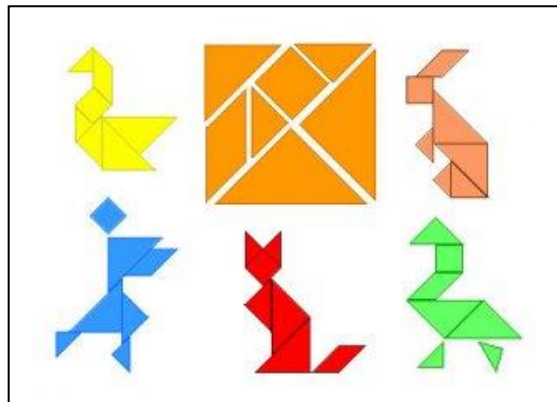
ASL INSTRUCTORS NETWORK

Submitted By: Rob Nielson

The ASL Instructors Network is a collection of resources to help ASL teachers to interact with colleagues, ask questions, share tips and ideas, and basically to bring ASL teachers closer together in an effort to improve and promote ourselves and our profession.

Come join us!

www.WestwoodASL.com/aslinstructors



ASL TANGOES

Submitted By: Alysse Suzanne Rasmussen

Looking for a way to enhance visual perception ability, develop problem solving skills, creative thinking capacity and teamwork in your ASL students?

Having students work with a Chinese tan grams (also called tangoes) can do the trick. You'll need colored paper (cardstock) cut into 7 puzzle pieces (2 large triangles, 1 medium triangle, 2 small triangles, 1 square, and 1 parallelogram. You'll find instructions and examples here:

<http://www.enchantedlearning.com/crafts/chinesenewyear/tangram/>

Continued on page 3.

CONTENTS

HOLD THE PRESSES! 1
 ASLTA News Running Late 1
 ASL Instructors Network 1
 ASL Tangoes 1
 CIT CONFERENCE 3
 ASLTA PRESIDENT 4
 ASLTA VICE-PRESIDENT 5
 ASLTA SECRETARY 6
 ASLTA TREASURER 8
 ASLTA EVALUATION CHAIR 9
 ASLTA AFFILIATED CHAPTER CHAIR
 10
 Veditz ASLTA (Northern Virginia) 10
 Washington ASLTA 11
 FLORIDA ASLTA (FASLTA) 11
 ASLTA PROFESSIONAL 12
 DEVELOPMENT CHAIR 12
 ASLTA Member-At-Large 12
 committee reports 13
 REHI: Research in Higher Education 13
 ASL Honor Society 13
 ASLTA Website 15
 What can you find on the ASLTA website? .. 15
 Save the Dates (2013) 15
 ASLTA's Conference 15
 ACTFL's Convention 15
 PROFESSIONAL DEVELOPMENT
 SCHOLARSHIPS 17
 SCHOLARSHIPS 17
 Sign Media, Inc. 17
 The Northeast Conference on the Teaching of
 Foreign Languages 17
 Teaching with Wordless Cartoons 22
 Memorial Funds 23

Tom Riggs Memorial Fund 25
 LF2 Memorial Fund 25
 In HeartFelt Memory 26
 Professional Development Opportunities
 26
 Gallaudet University 26
 University of Alberta 26
 Valencia College 26
 VRS Interpreting Institute 26
 McDaniel College 27
 PRESS RELEASES 28
 MLA 28
 Sans, Inc. 28
 Looking for work? 30
 Lake Elsinore Unified School District 30
 EASTERN KENTUCKY UNIVERSITY 30
 AMERICAN SIGN LANGUAGE
 INSTRUCTOR 30
 Troy University 30
 Interpreter Training Program 30
 Gallaudet University 30
 Department of American Sign Language
 (ASL) and Deaf Studies 30
 Department of American Sign Language
 (ASL) and Deaf Studies 31
 ODDS & ENDS 31
 LDC Page for Sign Language Resources 31
 RESEARCH IN HIGHER EDUCATION
 COMMITTEE (REHI) 32
 ASLTA Annual Chapter Affiliation 33
 Deadlines for Articles & Advertisements
 34
 2012 ASLTA Membership Form 35





Each pair of students will be given the 7 tans (pieces). One student will face the board; one won't. The student who faces the board will describe which pieces are to be used and how to place them in order to recreate the design on the board. When the design is done, the student facing away from the board raises his/her hand and a "winner" can be declared (if your students are competitors) – otherwise just check the design (especially for signer's perspective). Have the students switch places and go again.

This activity addresses at least two of the National Standards:

Communication & Connections.

Standard 1.1

Students use American Sign Language to engage in conversations and provide information, express feelings and emotions, and exchange opinions.

Standard 1.2

Students understand and interpret recorded and live American Sign Language on a variety of topics.

Standard 3.1

Students reinforce and further their knowledge of other disciplines through the study of American Sign Language.



CIT CONFERENCE

ASTLA Members Can Register for CIT Conference at Member Rate

CIT Conference October 17 - 21, 2012
in Charlotte, North Carolina

CIT appreciates the partnership with ASLTA in the interpreter education process. To recognize this, ASLTA members are able to register for the CIT Conference at the Member Rate. To do so, you can use this coupon code in the online registration process on CIT's website - <http://cit-asl.org/conf/registration.html> or download the registration form.

Coupon Code: E192D2AD36

(If you add this code in the online payment process, it will give you a \$100 discount automatically.)

You can also find out more information about the conference at <http://cit-asl.org/conf>.

If you have questions in this process, you can contact Doug Bowen-Bailey, CIT Registration Co-Chair - webmaster@cit-asl.org.



ASLTA PRESIDENT



Glenna Ashton, Ed.S.
ASLTA Professional
Valdosta, GA / Boca Raton, FL
president@asлта.org

PAH! We are now fully independent with our own 501(c)3 as a national non-profit organization. Many thanks go to the hard work of several people. Betti Bonni and Alysse Rasmussen laid the groundwork for reorganizing all the information suitable for the IRS format. Cathi Bouton finished up with all the details and updating work for the final IRS application forms. We also had a lawyer that helped review the documents to make a stronger case for our application. We thank NAD for having maintained a financial link with us since 1975 and CIT for taking over that link just in the last year.

Let me make this clear, we always had a 501(c)3 status but it was under NAD. Now we are completely separate with our own 501(c)3 which means we no longer report to any other organization. We start doing our own reporting and filing our own tax forms. Before, our financial information was sent to NAD to be included in their reports. Also according to IRS, state and local chapters of any national organization cannot use the

national organization’s status for tax purposes. Each chapter needs to get incorporated in their state, which is the very first step that needs to be taken in order to file for federal 501(c)3. Several chapters Florida and Maryland have applied for and received their federal 501(c)3, too.

The national standards for ASL are completed and almost ready for publication. We are waiting on some drawings of ASL signs to insert as examples. ACTFL is still in the process of moving forward for the next publication using both books and CDs.



May 20-22, 2012 was the annual JNCL-NCLIS Delegate Assembly (Joint National Council on Languages – National Consortium of Language Independent Studies). This is the umbrella organization of all foreign language organizations in the United States including ASLTA. We met to hear from various government and agency speakers about topics related to foreign languages in education, defense, and other fields. We met with our state and local Congress Representatives and Senators to educate them about the importance of foreign

languages including ASL. This year Brian Kilpatrick and I attended.

Now that we have accomplished our goals of obtaining our own 501(c)3 status and having the ASL standards ready for publication, we're moving on to new projects. Brian Kilpatrick, Vice-President, is working on updating and expanding our policies and procedures to be collected and published in one place. We also are starting strategic planning to discuss where we are and where we want to go. We continue trying to improve our web site to include more information.

I recently attended the Deaf Studies Today! Conference at Utah Valley University in Orem, Utah, April 12 – 14. Unfortunately the few days we were there, it was cold, rainy, and windy, but the majestic mountains could still be seen all around. This conference had many new faces both with the attendees and presenters. It was refreshing to see many new people coming into the field of Deaf Studies. There were workshops, panels, and an arts and films exhibit. The keynote speakers were great and gave us a lot to think about – Patti Durr, Hank Klopping, and Joe Murray. One thing of note was that there is a need for more ASL teachers to obtain doctorates so we can have more research on teaching ASL as a first or second language. This newsletter would be happy to accept articles related to this for early publication.

Finally, we are looking forward to attending the NAD conference in July in Louisville, Kentucky as ASLTA delegates. The ASLTA Board will meet at the CIT conference in October in Char-

lotte, North Carolina. The ASLTA conference committee headed by James Wilson is hard at work to create a great conference July 2 – 7, 2013 in Charlotte, North Carolina.



ASLTA VICE-PRESIDENT



Brian Kilpatrick
ASLTA Professional

Greeting!

The Bylaws of the American Sign Language Teachers Association were ratified by the membership on May 15, 2011. I am now working on the policies and procedures in progress. I thanked Glenna Ashton for sending different ASLTA procedures and the E-Motions and will continue on them during the summer.

Glenna Ashton and I went to 2012 Joint National Committee for Languages (JNCL) and National Council for Languages and International Studies (NCLIS) Delegate Assembly & Legislative Day in Washington, D.C., May 20-22. The annual meetings facilitate better preparation and participation regarding legislative/policies issues. During Legislative Day, we as ASLTA representative were part of the delegation of language advocates participating in

Congressional visits from each state and across the country.

Glenna and I also will be attending the 51st Biennial National Association of the Deaf Conference and DeaFestival in Louisville, Kentucky, July 3-7, 2012. We are delegates to the NAD business meetings.



ASLTA SECRETARY



Dorothy M. Wilkins
ASLTA Professional
Rochester, NY
secretary@asлта.org

Oovoo ASLTA Board Meeting Minutes
 May 9, 2012 @ 8 pm to 9:15 pm

Attendance: Glenna Ashton (President), Brian Kilpatrick (Vice President), Cathi Bouton (Treasurer), Dorothy Wilkins (Secretary), Pat Beech (Chapter Affiliation Chair), Sharon Lott (Professional Development Chair), and E. Lynn Jacobowitz (Member-at-Large)

Technology is still an issue with some people not seeing everybody. Dorothy suggested Glenna to buy the upgrade to get better video quality. It is \$60.00 a year.

President's Report (Glenna Ashton)

1. The ASL standards are still not finished despite prodding; Jason will send the final copy to me before the JNCL meeting in May. The few committees have been inactive so I will encourage them to be active during the summer. I am now in contact with the CIT conference chair to make arrangements for the ASLTA room at the October conference.

2. Glenna, Brian and Pat will meet on May 18 to 22, 2012 for the JNCL conference. Glenna and Brian will stay at Pat's house. Others like Lynn can Oovoo with us on Monday night, May 21 8 PM for further discussion or planning.

3. Glenna and Brian will attend NAD Conference on the behalf of ASLTA.

4. Glenna will contact different committees who have been inactive and see where they are standing.

5. CIT registration – We all register online for it. There is a box to note that you are an ASLTA Board member. Don't pay for it. Doug will contact Cathi for the payments but they want the registration information from each of you. Let Cathi know if you want a banquet ticket.

Check the schedule to decide if you will stay for it or not. Everyone is to pair up for the rooms, except for Brian. For anyone that prefers to room with a non ASLTA Board member, only half the room will be covered. All reasonable travel expenses will be reimbursed, if in doubt check with Cathi. There is suffi-

cient fund for board members to attend the Banquet.

Vice President’s Report (Brian Kilpatrick)

Brian thanked Glenna for sending different ASLTA procedures, which are working in progress. He will work on them through summer. He’s recovering well from surgery.

Treasurer’s Report (Cathi Bouton)

– 501c3 went through without problems, which was unusual. ASLHS is a very important part of the reason for the 501c3 so it must be supported. Quickbooks are still being set up. A member system will be worked on in June. A budget will be developed. The problems that members have with the forms and payments will help in designing a clear understandable system. ASLHS finances, forms, payments, etc. will be merged. See treasurer reports that were just sent.

Secretary’s Report (Dorothy Wilkins)

Dorothy still checked Rochester PO regularly. Very little mail comes to POB. POB must be kept since it is our official address. (So it seems the new system of sending direct payments is working). She will not be attending the CIT conference. Lynn will replace Dorothy as a secretary. Many thanks, Lynn!

Chapter Affiliation Chair’s Report (Pat Beech)

Pat is still collecting chapter dues, and

news from chapters for the ASLTA Newsletter.

She recently had a VP chat with NJASLTA president. Below are her concerns:

1. How to increase membership - One suggestion she had was to enforce ASLTA members to join local chapters. Could we put a percentage of the ASLTA membership towards local chapter membership (members would pick which local chapter they want to be a member of)?
2. Establish regions of chapters -- Region 1 represents Northeast, Region 2 represents Southeast, etc.
3. During ASLTA conference, need more time for meeting with chapters. Chapters Luncheon is not enough.

Professional Development Chair’s Report (Sharon Lott)

Sharon would like to see the feedback/input from 2011 Conference. It was suggested that she contacts Barbara Hayes. She is in the process of working on “Call for Presentations.” 2013 Committee will have meeting this coming Friday; afterwards we will get a report.

Member-at-Large’s Report (E. Lynn Jacobowitz)

Lynn planned to develop a chart for 50 different states to promote ASL as a language rights for the legislation project. She will design a model bill on language rights and collecting state legisla-

tion information.

Certification and Evaluation Chair's Report (Keith Cagle)

We agreed to give Keith the permission to use his home as ASLTA POB. Amnesty idea – it was suggested that Keith does a survey on why certifications lapsed. Possible options are pay all back dues, retake same level exam, other? How make people want to get and keep their certification?

ASL Honor Society's Report (Jason Zinza)

Jason is already working with Cathi on single membership form, chain of command – we need someone to be liaison to ASLHS – who?, yes to have more involvement in conference with booth, etc., yes to have access to membership records to check dues, etc., - tabled – membership cycle (need to check by-laws), financial support for scholarship

Submitted by:
Dorothy M. Wilkins
ASLTA Secretary
2009-2013

There is one E-Motion being made on electronic mail:

March 21, 2012
Dr. E. Lynn Jacobowitz moved that ASLTA donate \$1000 for the 2012 NAD conference. Carried.



ASLTA TREASURER



Cathi Bouton, MA
ASLTA Professional
Clinton, WA
treasurer@aslta.org

The best news I have to share is that the IRS approved our 501(c)3 application! Now that this major hurdle is out of the way, we are on to more big projects. Memberships were due in January and we've had a flood of them come in every day. As the new treasurer, I didn't realize how huge a task this is! We are also in the process of implementing an online registration system; this has been delayed slightly by the need to process the incoming memberships. It is my goal to have the online payment system up and running by early fall - in time for the 2013 National Professional Development Conference registrations.

As always, if you have any questions or concerns for me - or just want to say hi! - please send me an email: treasurer@aslta.org.

New mailing address:
ASLTA Treasurer
P.O. Box 38
Clinton, WA 98236



ASLTA EVALUATION CHAIR



Keith M Cagle, Ph.D.
ASLTA Professional
Newell, NC

I trust that your spring 2012 semester has started off good and ends well.

For a long time, I have desired to become involved with a new Master program for ASL teachers. In 2007-2010, I assisted the University of Northern Colorado to create a new MA program in Teaching ASL. The state government froze the program funding in summer 2010. Later in Fall 2010, Dr. Raychelle Harris at Gallaudet University started exploring the feasibility of establishing a new MA program in teaching Sign Language. She has been instrumental with the new program which has taken off last Summer 2011 with 60 students. With an unexpected high demand, the ASL and Deaf Studies Department needs more faculty. I gladly decided to accept Gallaudet's offer to become an Associate Professor. I began my new job there last January 8th.

Some people have asked about where the ASLTA Evaluation office will be. It will be moved from North Carolina to Maryland. A new address will be notified

shortly. We will work on a smooth transition.

More candidates are sending their Provisional and Qualified evaluations to me electronically through the attachment of scanned PDF documents and Unlisted YouTube address. It is much more convenient for the evaluators and office. Make sure that all scanned documents and Unlisted YouTube address are in ONE email sent to me. If you have any questions about how to do the evaluation electronically, please feel free to contact me at asltaevaluation2003@yahoo.com

Have a great summer season!
Keith M Cagle, Ph.D.
ASLTA Evaluation and Certification
Chair
PO Box 39
Newell, North Carolina 28126
P.S. No videophone is available in the
ASLTA Evaluation Office.



ASLTA AFFILIATED CHAPTER CHAIR



Chapter Liaison
Pat Beech
ASLTA Professional

To all chapters,

Hope you are ready for the summer. I want to take this opportunity to thank Dorothy Wilkins for stepping in as the interim Chapter Affiliated Chair. I am honored to be back as your Chapter Affiliated Chair until 2013.

By the way, if your chapter hasn't submitted the 2012 Annual Chapter dues with updated officer info, please contact me ASAP for the form. To be considered "active", it is critical that the chapters keep up with these – dues and updates. My e-mail address is: pgbeech@aol.com.

Please contact me if you have concerns about your chapter. Also, please send me news.

Below are reports from 3 chapters.

Thanks,
Patricia Beech
Chapter Affiliated Chair, 2012-2013

VEDITZ ASLTA (NORTHERN VIRGINIA)

In May 2011, Dawn Hitchens-Seymour gave a presentation on "HB1435 and Its Impact on Virginia". After the presentation, an election of officers for 2011-2013 was held. The new officers are:

- President - Brian Leffler
- Vice-President - Kevin Taylor
- Treasurer - Paula Debes (reelected)
- Professional Development Chair - Debra Wolff
- Members-At-Large (3) - Mary Bagby (reelected), Julie Bagshaw (reelected), Kalen Beck,

In April 2012, Patricia Beech was approved as secretary.

VASLTA held two workshops recently. The first workshop was on November 12, 2011. The presenter was Katie Faust, and her topic was "An Introduction to ASL Linguistics for ASL teachers". The second workshop was by Kim Pudans-Smith on April 21. She presented "How To Prepare Our Students for Their Video Feeds/Assignments & Rubric/Assessment for Student's Performance/Expressive Portion".

VASLTA had a booth at "Celebrate Communication" on May 12. This was hosted by Northern Virginia Resource Center for Deaf and Hard of Hearing Persons.

VASLTA is making plans for an all-day ASL Blitz on October 13.

WASHINGTON ASLTA

Hello from the WA ASLTA Chapter!

WA ASLTA recently had elections and Kristi Winter was elected the new president. She is excited to serve her chapter and share WA ASLTA news with you. Many members of WA ASLTA and Nwaslta (the Oregon chapter) volunteered in staging the 2011 ASLTA National Professional Development Conference held in Seattle last summer. Lance Forshay, the WA ASLTA president at the time, complimented the Conference volunteers for their time and teamwork in making the Conference a great success.

We had a general membership meeting on November 12, 2011, in which new officers were elected. The new WA ASLTA officers are President Kristi Winter, Vice-president Brenda Aaron, Secretary Jessica Phillips (reelected), Treasurer Terry Sasser (reelected), and Professional Development Chair Barbara Hayes (reelected). Our first board meeting was held in January. The Board is determined to continue assuring quality ASL teaching at all education levels; elementary, middle, and high schools as well as colleges and universities, through providing annual ASL teachers' workshops and Northwest regional conferences on teaching ASL and Deaf Studies.

On March 22, the ASL Consortium of Washington State; High Schools and WA ASLTA provided two spring 2012 professional Development Training workshops for ASL teachers plus a ses-

sion for teachers to discuss and share lesson plans/classroom activities for teaching classifiers. The workshops were held at Seattle Central Community College. One workshop was developed for beginner level ASL teaching was "Rubrics RULE!" Presented by Mitch Noll, and the intermediate/advanced level teaching workshop was "Incorporating Compounds and Conjunctions in ASL Instruction" presented by Brenda Aaron. Kudos to both Mitch and Brenda for providing these much-needed workshops!

WA ASLTA and Nwaslta will be conducting a very exciting conference this coming fall, the 5th Biennial Northwest Regional ASL Teachers Conference, at Pierce College in Puyallup, Washington, on Friday and Saturday the 12th and 13th of October. The Conference theme is "Empowering ASL Teachers through Community Collaboration". At this Conference, we will learn, discuss, share and network among ASL instructors. Tentatively, some presentation topics will be (1) Community Collaborations, (2) Incorporating Deaf Culture, (3) New Research on ASL and Second Language Teaching, (4) Innovations in Evaluations and Assessments, and (5) ASL and Deaf Studies related topics. Additional information on this Conference will be posted in the ASLTA website soon.

FLORIDA ASLTA (FASLTA)

February, 2012: Florida ASLTA held its annual conference in February. More than 60 ASL / Deaf Studies teachers attended, some from as far away as Mary-

land and Ohio! Next year's conference will be in South Florida. Check us out at: www.fasлта.org or on Face Book.

FASLTA serves on the board of the Florida Association of the Deaf and the Florida Foreign Language Association. Recently our president has been asked to consult on ASL program development for a Central Florida college.

FASLTA will be attending the Silent Weekend in June in Orlando. We'll also be participating at the Florida Foreign Language Association Conference in October (and sending a representative to CIT who will report back to the membership). We'll be hosting our 2013 Conference in February in South Florida. Come check us out on Face Book or www.fasлта.org



ASLTA PROFESSIONAL DEVELOPMENT CHAIR



Sharon Lott
ASLTA Professional

Sharon Lott is the ASL faculty at Central Piedmont Community College (CPCC). Prior to this job, she was a Staff Development specialist at North Carolina School for the Deaf (NCSD). She coor-

dinates and teaches ASL, Deaf Culture, Linguistics and a variety of other sign related topics at NCSD. She is a National SLPI: ASL Trainer for rater and trainer for the SLPI with experience in providing training as far as Ghana and Kenya, Africa. Sharon was also an integral part of the NCSD Mentorship Project. Mrs. Lott performs evaluations for Do-It Center for Northern Colorado University. Sharon has over 25 years' experience teaching ASL at numerous of Colleges/Universities in NY and NC. Locally she has taught at Lenior-Rhyne College, Western Piedmont Community College, Gardner Webb University and Appalachian University. She holds a Master's Degree in Career Development and Human Resources. Currently, she is a student at Gallaudet's new program, Master in Teaching Sign Language which she will graduate this summer



ASLTA MEMBER-AT-LARGE



E. Lynn Jacobowitz, Ph.D.
ASLTA Professional

E. Lynn Jacobowitz, Ph.D., ASLTA, a retired professor in the Department of ASL and Deaf Studies at Gallaudet University, is well known for her comedy, poetry, storytelling, consultations, articles, and cartoons about Deaf culture

and humor. She provided various workshops and consulted various schools / colleges on ASL-English related issues nationally and internationally. She was the past President of the national American Sign Language Teachers Association from 1995 – 1998 and was responsible for implementing the national ASL Curriculum committees for first and second language learners. She is also responsible for setting up the National ASL Legislation and increased the number from 22 to 38 states that recognize ASL as a language since 1995 to 1998. She is currently the Vice President of Maryland ASLTA. She is a co-author of *Have You Ever Seen...? An ASL Handshape DVD/Book* and the president/co-owner of *ASL Rose*, a collaboration which produces, promotes, and provides ASL-English bilingual education materials and teacher education workshops.



COMMITTEE REPORTS

REHI: RESEARCH IN HIGHER EDUCATION **Alysse Rasmussen, MA**

Seeking volunteers to help collect more data. If you can make 5 VP or phone calls, you can volunteer! For more information contact: AlysseR@aol.com. Please put REHI in the header.



ASL HONOR SOCIETY **National Coordinator** **Jason E. Zinza, MA**

Wow, what a year! The ASL Honor Society is rapidly growing as more teachers realize the value an honor society can bring to their ASL programs. This program, brought to you by ASLTA, supports teachers and students at all levels of instruction. What we do:

- We offer grants for ASL teachers to buy supplies, equipment, pay for guest speakers, or anything else an ASL teacher needs.
- We offer the only scholarships for ASL students. High school seniors and college students can apply for the scholarships, which are for students majoring or minoring in: ASL, Deaf Studies, Interpreter Preparation, and Deaf Education.
- We sponsor an annual ASL literature competition to help your students deepen their storytelling and ASL poetry skills.
- We encourage students to do well academically in ASL classes in order to earn honor cords and medals to wear at graduation. Don't underestimate the value students place on recognition like this!

Some exciting new projects the ASL Honor Society is bringing to you:



- A complete induction ceremony, with print and video materials. Want to know how to sign the ASLHS pledge in ASL? Check out the ASLHS website this summer!

- We are hosting the first annual Deaf Art competition in the fall. Help your students understand De'VIA and compete to earn prizes at the same time!

In the 2011-2012 school year, ASLHS grew by more than 30%. We aim to bring ASLHS chapters to more schools across the country, so what are you waiting for? Visit our website at www.aslhonorsociety.org, and like us on Facebook!

Deaf Trivia

Who was the first deaf person whose name was recorded for posterity?

The first deaf person whose name was recorded for posterity was Quintus Pedius.

He was born deaf, named for his grandfather, and became a noted painter in the 1st Century AD.



American Sign Language Teachers Association, I...
Income and Expenses
 January 1 through March 31, 2012

	Jan - Mar '12
Ordinary Income/Expense	
Income	
Direct Public Support	1,010.00
NPDC Income	100.00
Program Income	18,093.03
Total Income	<u>19,203.03</u>
Gross Profit	19,203.03
Expense	
Advertising	1,000.00
Bank Service Charges	
Contract Services	720.00
Interest Expense	5.97
Membership and Dues	500.00
Newsletter Distribution	700.00
Operations	584.06
Other Types of Expen...	1,240.00
Professional Fees	500.00
Program Expense	3,835.56
Travel and Meetings	400.00
Total Expense	<u>9,485.59</u>
Net Ordinary Income	<u>9,717.44</u>
Net Income	<u><u>9,717.44</u></u>

American Sign Language Teachers Association, I...
Balance Sheet Summary
 As of March 31, 2012

	Mar 31, '12
ASSETS	
Current Assets	
Checking/Savings	78,499.43
Accounts Receivable	40.00
Other Current Assets	1,855.00
Total Current Assets	<u>80,394.43</u>
Other Assets	58,725.47
TOTAL ASSETS	<u><u>139,119.90</u></u>
LIABILITIES & EQUITY	
Liabilities	
Current Liabilities	
Accounts Payable	2,018.80
Credit Cards	2,815.12
Total Current Liabilities	<u>4,833.92</u>
Total Liabilities	4,833.92
Equity	134,285.98
TOTAL LIABILITIES & EQ...	<u><u>139,119.90</u></u>

ASLTA WEBSITE

WHAT CAN YOU FIND ON THE ASLTA WEBSITE?

Have you been on the ASLTA website lately? The URL is www.aslta.org. You'll find all sorts of exciting information. If you want to find a local chapter or apply for ASLTA certification (or delve into state licensure), it's all there.

If you check out "Employment", you'll find a list of job opportunities (both full and part-time).

If you check out "Professional Development", you'll find handouts from the 2011 Conference

If you check out "Workshops", you'll find references to many upcoming events. Here's a sampling:

- July 10th-25th, 2012 Siena, Italy
- September 22 & 23, 2012 "Preparation for ASLTA Provisional Certificate" workshop with Carole Lazorisak, Long Island City (Queens), NY
- October 12 & Sat, October 13, 2012 Fall 2012 Northwest Regional ASL Teachers Conference Pierce College, Puyallup, Washington

You can add your own workshops, too!

My favorite is "Resources"! That's where you're going to find ASLTA's Position Papers and videos. You really

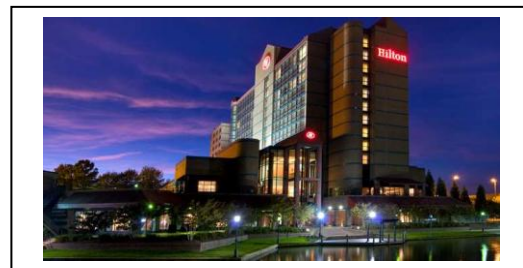
ought to take a look see. There's everything from class size recommendations to the latest on National Standards.



SAVE THE DATES (2013)

ASLTA'S CONFERENCE

... is July 2 - July 7, 2013 in Charlotte, NC at the Hilton Charlotte University Place, 8629 JM Keynes, Drive, Charlotte, NC 28262



ACTFL'S CONVENTION

... 2012 will be in Philadelphia November 16-18 (with Pre-Convention workshops to be held November 15) and then 2013 in Orlando November 22-24, 2013 (with Pre-Convention workshops to be held November 21st). ACTFL offers scholarships for first time attendees.





ASLTA

Conference 2007

DVDs

Missed out on some of the workshops? Get them on DVD!

A lot happened at the ASLTA Conference and you can catch up on anything you missed with these high-quality DVDs of conference workshops and events. Share conference workshops with colleagues and students, or just review highlights at your leisure.

Presented in American Sign Language

DVDs will be shipped in February 2008

ASL Poetry and Story Telling	1 disc	\$29.95
About Teaching ASL	4 discs	\$99.95
Conference Proceedings	24 discs	\$146.95
Combo (All three DVDs)	29 discs	\$234.85

Name _____
 Address _____
 City _____
 State _____ Zip Code _____
 Phone _____
 Email _____

	Quantity	Price	Total Cost
ASL Poetry/Story Telling	_____ x	\$29.95	_____
About Teaching ASL	_____ x	\$99.95	_____
Conference Proceedings	_____ x	\$146.95	_____
Combo (All three DVDs)	_____	\$234.85	_____
Orders are non-refundable			Total \$ _____
Portion of proceeds go to ASLTA			

Payment Method

check/money order
 Visa Mastercard
 Discover AMEX
 Name of Cardholder _____
 Credit Card # _____
 Expiration Date _____
 Signature _____

Please mail or fax order to:
 CSD-TV
 102 N. Krohn Place
 Sioux Falls, SD 57103
 FAX: (605) 367-5958



For more information contact CSD-TV at 800-642-6410 (V) or 866-273-3323 (TTY)

CSD (also known as Communication Service for the Deaf, Inc.) is a private, nonprofit organization dedicated to providing broad-based services, ensuring public accessibility and increasing public awareness of issues affecting deaf and hard of hearing individuals. Through global leadership and a continuum of quality communication services and human service programs, CSD provides the tools conducive to a positive and fully integrated life. Please visit us online at www.c-s-d.org to learn more about what we can do for you.



CSD-TV has launched two compelling new programs created by and for the deaf and hard of hearing community.



FYE provides investigative reports, interviews, feature segments and profiles of deaf and hard of hearing people in the news. **Spice Up** takes you into the kitchen of noted deaf chef Jeff Perri as he shares the secrets to creating exciting cuisine. Watch a new episode every week online at www.csd.tv



PROFESSIONAL DEVELOPMENT SCHOLARSHIPS



It's true that money doesn't grow on trees, but there are scholarship funds out there – especially for those of us interested in pursuing ASLTA Certification.



SCHOLARSHIPS
SIGN MEDIA, INC.



For the past several years SMI has been donating funds to support professional development opportunities for teachers who wish to pursue ASLTA Certification. Please thank SMI for all it does for ASL / Deaf Studies and ASL teachers!



THE NORTHEAST CONFERENCE ON THE TEACHING OF FOREIGN LANGUAGES

NECTFL serves educators in all languages, including classical, less commonly taught, and ESL, from Maine to

Virginia, at all levels from kindergarten through university, in both public and private settings. NECTFL holds an annual conference for those involved with foreign language education, offering both professional development and the chance to network with colleagues. More than 2,500 attendees take advantage of 150 companies' exhibits and 200 sessions and workshops. Events include the recognition of award winners from both inside and outside the field. Past winners have been President Jimmy Carter, Sesame Street, musician Taj Mahal, and the late Senator Paul Simon. For further information about NECTFL, go to www.nectfl.org or email nectfl@dickinson.edu.



Recipients of SANS Inc. /Mead Leadership Program Announced at NECTFL

Awards to the four fellowship recipients of the 2012 SANS Inc. /Mead Leadership Program were formally announced in April at the annual meeting of the Northeast Conference on the Teaching of Foreign Languages (NECTFL) in Baltimore. SANS has sponsored the Leadership Program for the past five years.

The SANS Inc. /Mead Leadership Program recognizes foreign language teachers who demonstrate leadership and vision in world language education. Mead Fellows are selected in part for the quality of the projects they propose. The plan of action for that project is developed by each Fellow with a mentor,

using input from leaders of 14 state foreign language organizations.

The Northeast Conference has long been committed to developing leaders for the profession from all instructional levels and languages. According to Rebecca Kline, NECTFL's director, "One finds past NECTFL leaders in a broad range of prestigious positions – they are university deans, program administrators, presidents of national associations, directors of media centers, and school district superintendents. The tangible

support provided by SANS Inc. has allowed NECTFL to maximize the impact of its efforts by creating fellowships for future leaders at all levels in the profession."

SANS is a leading instructional technology provider for language learning programs – FL, ESL, and ASL. For more information, visit www.sansinc.com or email moreinfo@sansinc.com.



TeachASL

Where teachers help teachers
Encourages free exchange of ideas & maintains an [archive](#)

To Join:

<http://listserv.valenciacollege.edu>

**Select the list you want; Select "Join or Leave"
Add your name; pick your settings!**

**We recommend:
Subscription: Regular or Digest;
Mail-Header: Listserv-style;
Acknowledgements: Receive copy**



**FULL TUITION SCHOLARSHIPS
AVAILABLE
for Culturally and Linguistically
Diverse Students**



Master of Arts in Education: Teacher Preparation Program

Early Childhood Education and Deaf Education

Elementary Education and Deaf Education

Secondary Education and Deaf Education

Deaf Education



**Now
accepting
applications for
Fall 2012**

INTERESTED?

Contact Dr. Amy E. Hill at ahill@gallaudet.edu or (202) 253-2668 Voice/V7

http://www.gallaudet.edu/Education/Graduate_Programs/Master_of_Arts_in_Education_Teacher_Preparation_Program.html



**EARN CREDITS
AND ENHANCE
TEACHING
SKILLS**

VRS Interpreting Institute
Empowering Interpreters and Educators

The VRS Interpreting Institute (VRSII) offers courses for ASL and interpreter educators that introduce new teaching methodology, improve teaching skills and offer creative curriculum ideas to keep ASL and IEP students engaged – all while providing Continuing Education Units (CEUs).

The VRSII's **preeminent instructors** and **small class sizes** produce an optimum learning environment.

"The VRSII is a one-of-a-kind facility, with endless possibilities for empowering interpreters and educators. They are making a difference in the field. Participate!"

- Marty Taylor,
Ph.D., Interpreting
Consolidated

To discover more about the ASL and interpreter educator courses offered at the VRSII, visit www.vrsii.com/training.

© 2012 VRSII Communications, Inc. All rights reserved.

ASL  Rose

www.aslrose.com

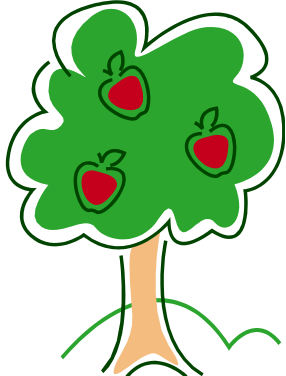
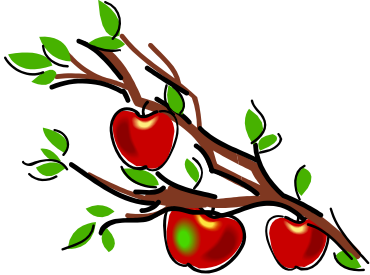

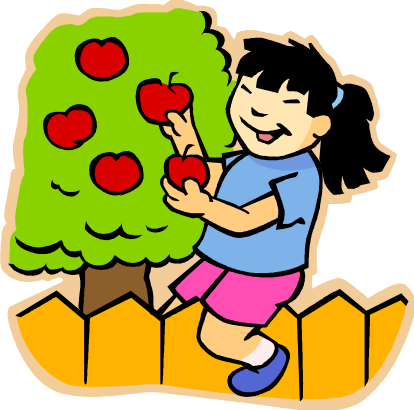

View ASL. Read English. Be bilingual-bicultural.

ASL **Rose**
P.O. Box 614
Frederick, MD 21705-0614
Video Phone: 240-575-2130
Toll Free Voice Message: 866-680-6398
Fax: 866-311-8313

TEACHING WITH WORDLESS CARTOONS

By Alysse Suzanne Rasmussen

Take a simple concept. Find some clip art. Put it together. Have the learners act out what they see. Help them polish their signs (and the apple as well). It's a great way to get them to "think" visually!

	
	
<p style="text-align: center;">■ ■ ■</p>	 <p style="text-align: right; font-size: small;">Copyright 2012, Alysse Suzanne Rasmussen</p>



<p>Lunch</p> 	
	
	
	
<p>...</p>	

Copyright 2012, Alysse Suzanne Rasmussen

What the family saw BK do ...



...

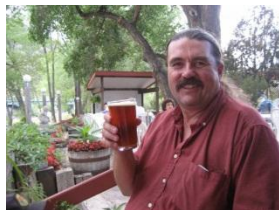


Copyright 2012, Alysse Suzanne Rasmussen

MEMORIAL FUNDS

Two memorial funds have been established by the ASLTA Board to honor several ASLTA members who have passed on. See the information below, and consider making a donation to one or both Funds!

The Board would like to see each fund reach at least \$5,000 prior to accepting any application for funds. Please help! Your donation will help future leaders of ASLTA.



TOM RIGGS MEMORIAL FUND

The Tom Riggs Memorial Fund was established to honor Thomas Riggs who was very involved in ASLTA at the national and chapter levels. The monies will go toward supporting ASLTA affiliated chapters in their activities at a state level.

Examples of supported activities:

- 1) Supporting the state chapter conference via sponsorship, program book, or key presenter
- 2) Supporting the chapter President to attend ASLTA conference including the chapter luncheon, especially for first timers
- 3) Supporting invited officers for the leadership and/or advocacy training opportunities provided by ASLTA

4) Other appropriate chapter activities at the state level



LF2 MEMORIAL FUND

The Lawrence Fleischer and Lawrence Forestal (LF2) Fund was established to honor these two former presidents of ASLTA for their support of leadership skills. The monies will go toward supporting leadership and advocacy training for the national and chapter officers.

- Training opportunities may include;
- 1) Invited trainers for the ASLTA conference to provide one day pre-conference training in leadership and/or advocacy for invited officers.
 - 2) Extended training in leadership and/or advocacy for invited officers in a separate workshop.

Yes!! I am enclosing my donation of \$_____. I would like this amount to go to (select one or both):

Tom Riggs Memorial Fund

LF2 Memorial Fund

My Name: _____

Address, City, State, Zip: _____

Send check payable to ASLTA to:
ASLTA Treasurer, P.O. Box 38, Clinton,
WA 98236



IN HEARTFELT MEMORY

Evelyn Preston (Hood) [1920-2011] became Deaf at the age of 3 from a high fever. She was a lifelong resident of Los Angeles County where she was employed during WW II in aircraft work helping the war effort. She returned to college at the age of 50 to earn an AA degree and become a teacher of American Sign Language. She taught for nearly 40 years and influenced many lives positively for Deaf people in her community. She taught for LA School District; First Baptist Church of Van Nuys and Glendale Community College. She was last employed as an ASL tutor with the College of Southern Nevada (at the age of 84).

She most recently served on the Governing Board of the LV Charter School of the Deaf.

She was a member of The National Association of the Deaf; Nevada Association of the Deaf; Deaf Seniors of America; Las Vegas Silver Belles; Nevada Registry of Interpreters for the Deaf and LV Club of the Deaf.



PROFESSIONAL DEVELOPMENT OPPORTUNITIES

GALLAUDET UNIVERSITY

... The Department of American Sign Language and Deaf Studies offers a M.A. degree in Sign Language Teaching. This program is designed to prepare future sign language teachers, who will

provide exemplary leadership in the sign language teaching field. For more information, contact:

SignLanguageTeaching@gallaudet.edu

UNIVERSITY OF ALBERTA

... is pleased to announce the offering of two fully on-line courses for interpreter educators and workshop teachers. These courses are available to participants that meet the pre-requisites from any country. The courses are option courses that can be credited towards the Masters in Educational Studies or they can be taken as individual courses. For more information:

<http://www.mes.ualberta.ca>

VALENCIA COLLEGE

... offers 5 online courses for Florida ASL educators who need to acquire the FL-DOE K-12 ASL Endorsement: ASL 2510: Deaf Culture, ASL 2300: Structure of ASL, ASL 2600: Methods of Teaching ASL, ASL 2601: 1st & 2nd Language Acquisition of ASL, and ASL 2700: ASL Literature. Class sizes are small. For more information:

www.valenciacollege.edu or contact the ASL / Interpreting Studies Coordinator, Debbie Drobney:
ddrobney@valenciacollege.edu.



VRS INTERPRETING INSTITUTE

The VRS Interpreting Institute (VRSII) offers training for ASL and Interpreter educators, at no cost, through its Educator Empowerment Series (EES) courses. The VRSII contributes and responds to professional research trends and

practices. Esteemed ASL interpreter educators and lecturers are frequent guest teachers at the VRSII. They work closely with class participants to develop curriculum for nationally-accepted ASL training programs that class participants can implement in their own IEPs. EES courses offer CEUs to participants. The VRSII courses also offer graduate and undergraduate credit through the University of Arizona. And, the VRSII now offers a master's program in SL/English Interpreting with a concentration in Interpreter Education through a partnership with the University of North Florida. To learn more, visit www.vrsii.com/training"



McDANIEL COLLEGE

... is offering several courses that are related to enhancing the teaching skills of those who may be teaching ASL in the K-12 setting. Each course is \$1236. There is also a \$50 application fee to the college in order to register for classes.

June 18 - July 6 (3 week session)

DED 566-01 Assessing the ASL L2 Learner (Instructor: Dr. Byron Bridges). This course focuses on description and evaluation of American Sign Language by assessing sign language skills of L2 learners. Measurements using ASLPI, diagnostic evaluation, and ASL checklists and rubrics are emphasized. Extensive classroom exercises focus on the measurement and analysis of language

samples by phonological, morphological, and syntactic criteria for L2 learners.

DED 566-02 Methods of Teaching the ASL L2 Learner (Instructor: David Martin). This course focuses on methods of grammar-based and non-grammar-based teaching; assessment of materials and resources; material preparation, and curriculum development of ASL L2. Survey of traditional and innovative methods and their application to ASL instruction will be explored. ASL instruction and its application to the ACTFL standards will be emphasized. Signed and written assignments and class discussion will focus on teaching and curriculum development. This course is taught in ASL only.

DED 538-01 American Sign Language Linguistics (Instructor: Marty Blakely). This course provides an analysis of the major structural features of American Sign Language: phonology, morphology, syntax, semantics, and discourse.

July 9 - July 27 (3 week session)

DED 515-01 ASL Storytelling (Instructor: Andrew Byrne). This course focuses on literacy connections through American Sign Language (ASL) storytelling. Topics, which are covered, are literature (oral and written), ASL literature, literacy, ASL literacy, storytelling, ASL storytelling, retelling, narrative stages, the ASL Storytelling Process, and the link between ASL storytelling and reading/writing. Candidates are given opportunities to view, analyze, and criticize stories as well as to create stories in ASL for all ages. In addition, they ac-

quire familiarity with the ASL curriculum as well as the development and implementation of lesson plans based on ASL literature.

569-01 American Deaf Culture (Instructor: Ricky Rose). The course provides candidates with a perspective on Deaf people who use American Sign Language (ASL) and their cultural identity. The course is based on a cultural perspective as an alternative to the pathological model, and explores the historical evolution of the Deaf community in terms of language, self-image, culture, and arts.

DED 540-01 Advanced ASL Linguistics: Sociolinguistics (Instructor: Dr. Dan Koo). This course provides a detailed and comprehensive examination of the major linguistic structures of ASL including its phonology, morphology, and syntax. Advanced discourse analysis will also be presented. Recent research on ASL will be featured, with consideration of factors affecting language use and change. Special topics within ASL Linguistics will be added on occasion.

Mark Rust (mrust@mcdaniel.edu)
SKYPE: Dr.MMRust



PRESS RELEASES

MLA

The MLA has just launched the [Academic Workforce Data Center](#), an online resource that presents Department of Education (DOE) data about the com-

position of the academic workforce at 4,246 colleges and universities in the United States. The data center, which is the focus of Michael Bérubé's [Summer Newsletter column](#), will make important information about academic staffing available to the academic community, parents, students, and policy makers.

When you visit the data center, you'll be able to look up statistics on part-time, full-time, tenure-track, and non-tenure-track instructors at your institution and compare data from 2009 and 1995. We also encourage you to take a survey about your own experiences there. Data from this project will be collected in the coming months and, together with the DOE data, will help us develop a comprehensive database that documents the conditions of academic employment on the nation's campuses. Your contribution to the data center and the contributions of your colleagues will support the MLA's advocacy of fair standards for academic employment.



SANS, INC.
Gloryvee Cordero Joins SANS Inc. as National Manager of R&D

SANS Inc., which provides technology solutions for language learning, announces that Gloryvee Cordero has joined SANS as National Manager of R&D.

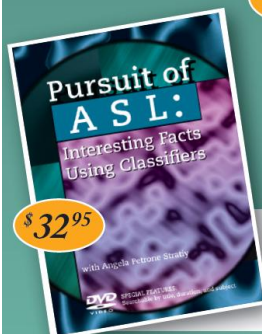
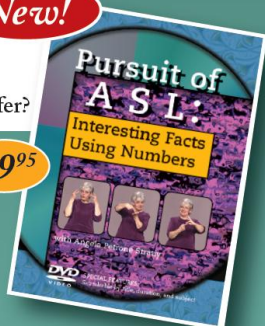


Improve your ASL classifiers and numbers

- What if Barbie was a real woman?
- How far can insects fly?
- How do address systems differ?

New!

\$29⁹⁵



\$32⁹⁵

- How was Velcro invented?
- Why do we have eyebrows?
- How do you saw the woman in half?

We Can Do It!



Build Your Confidence



**INTERPRETING
CONSOLIDATED**

www.ASLinterpreting.com

Phone/fax (780) 488-8698



HOW TO CONTACT ASLTA BY MAIL

Did you know that ASLTA now has three (3) different mailing addresses to ensure that we can respond to your needs quickly and efficiently?

#1. Please use Clinton PO Box address for membership dues, donations, checks, or bills.

ASLTA Treasurer
P.O. Box 38
Clinton, WA 98236

#2. Please use the **Rochester PO Box address** for letters for any information, inquiries, and requests.

ASLTA Correspondence
PO Box 92426
Rochester, NY 14692

#3. Please use the **North Carolina address** for all evaluations and certifications as usual.

ASLTA Certification
PO Box 39
Newell, NC 28126



LOOKING FOR WORK?

Check out ASLTA's Website for complete details and current job openings: www.aslta.org

LAKE ELSINORE UNIFIED SCHOOL DISTRICT

Temescal Canyon High Lake Elsinore, CA school district will be filing an ASL Teacher position on Edjoin: <http://edjoin.org/>



EASTERN KENTUCKY UNIVERSITY

Assistant Professor ~ Tenure Track ~ Department of ASL and Interpreter Education

More information is available on the employment website www.hr.eku.edu/employment/. You can search for this position by the requisition number 0611336. We encourage you to forward this information to any interested parties. If you have any further questions, please feel free to contact Dr. Laurence Hayes, Department Chair, at 859-622-4966, VP 859-353-0072 or laurence.hayes@eku.edu.



AMERICAN SIGN LANGUAGE INSTRUCTOR

TROY UNIVERSITY

Interpreter Training Program

Interested in becoming a team member of one of the leading Interpreter Training Programs? Troy University is now seek-

ing a full-time American Sign Language Instructor.

Apply here: <http://tinyurl.com/72btnqo>



GALLAUDET UNIVERSITY

There are two new faculty positions (full-time tenure track and full-time temporary) for teaching ASL in ASL and Deaf Studies Department at Gallaudet University. More information about the positions are attached with this email.

We encourage any ASL teacher who meets the qualifications to apply as soon as possible.

If anybody has any questions, please feel free to contact me at keith.cagle@gallaudet.edu
Regards,

Keith M. Cagle, Ph.D., Associate Professor
Chair of Search Committee
ASL and Deaf Studies Department
Gallaudet University

DEPARTMENT OF AMERICAN SIGN LANGUAGE (ASL) AND DEAF STUDIES
Tenure Track Faculty Position
Gallaudet University
College of Liberal Arts and Sciences
Position contingent on funding

The Department of ASL & Deaf Studies within the College of Liberal Arts and Sciences at Gallaudet University invites applications for one full-time tenure track position with the ASL component



of the ASL and Deaf Studies Department beginning Fall 2012.

Start date: August 2012

Screening and interviewing of applicants will begin immediately and continue until the positions are filled.

Application E-mail Address:
ASLFacPosition2012@gallaudet.edu

AND

DEPARTMENT OF AMERICAN SIGN LANGUAGE (ASL) AND DEAF STUDIES
Full-time Temporary (FTT) Faculty Position

Gallaudet University
College of Liberal Arts and Sciences
Position contingent on funding

The Department of ASL & Deaf Studies within the College of Liberal Arts and Sciences at Gallaudet University invites applications for one full-time temporary faculty position with the ASL component of the ASL and Deaf Studies Department beginning Fall 2012.

Start date: August 2012

Screening and interviewing of applicants will begin immediately and continue until the positions are filled.

Application E-mail Address:
ASLTempFacPosition2012@gallaudet.edu



ODDS & ENDS

LDC PAGE FOR SIGN LANGUAGE RESOURCES

The Linguistic Data Consortium of the University of Philadelphia is developing a [Language Resource Wiki](#) for languages without sufficient resources for researchers, especially NLP researchers:

This wiki is intended to serve as a publicly readable meta-resource on language resources for the research community, especially for under-resourced languages. We are seeding it from our own found resources, but we hope that other researchers will enlarge it in breadth of languages covered and in depth of detail. We are also seeking to add pages about special areas of interest, such as language-independent NLP resources, resources for endangered languages, and resources for signed languages.

The development of all these pages is intended to be ongoing, and we are looking for developers/editors for all of them, as well as for pages for other under-resourced languages.

Our [Sign Language Resources page](#) is still "under construction", which simply means that we don't yet consider it even minimally sufficient as a guide to research resources. Please visit it, and feel free to send me comments and suggest additions. While you're at it, look around the rest of the wiki to see what we have and how we arrange it for better developed resource pages. Feel

even more free to volunteer to edit this page, or any other actual or potential page for which you have appropriate expertise. (See the home page and the [Policies page](#).)

The current list of resource pages, at the bottom of the home page, is as follows:

Languages

- Bengali
- Berber
- Breton (under construction)
- Ewe (under construction)
- Panjabi
- Pashto
- Tagalog
- Tamil
- Urdu

Non-language-specific resources

- General Meta-resources (under construction)
- NLP Resources (under construction)
- Sign Language Resources (under construction)

Mark A. Mandel, Research Administrator

Linguistic Data Consortium
University of Pennsylvania
3600 Market Street, Suite 810, rm.103
Philadelphia, PA, 19104-2653, USA
ph: 215-573-5615
fax: 215-573-2175



RESEARCH IN HIGHER EDUCATION COMMITTEE (REHI) SEEKING VOLUNTEERS

1st: About us

REHI, the Research In Higher Education Committee polled 1872 4-year colleges and universities to find out which ones accepted ASL. We had 230 responses – that’s a 12% response rate. We want 100% response!

We’ve sent emails. We’ve sent snail-mails. We’ve even phoned a few ... but we need you!

2nd: About you

We need every ASLTA member to step up. We’ll assign you just 5 colleges. We cannot use anecdotal information – we need to follow a very specific script so that our data is both reliable and valid. You’ll contact each of your assigned colleges, collect and record the data.

That’s it. You’re done! We’re grateful! You’ve contributed to the greater good!

3rd: What will we get for our efforts?

An accurate accounting, which will be updated regularly by ASLTA, that will list which colleges accept ASL.

We need you! Please help!

Send an email to AlysseR@aol.com with subject header REHI.





ASLTA ANNUAL CHAPTER AFFILIATION

PO Box 92426
Rochester, NY 14692-9998

2012 Annual Chapter Fee

PLEASE PRINT CLEARLY!

Chapter's Name: _____

Since what year? _____

Contact person: _____ Email: _____@_____

Address: _____

Information about the Chapter Officers:

(This is for the ASLTA Chapter Affiliation Chair to use for distribution of information, communication, Chapter News in the ASLTA's quarterly newsletter, etc. This email will not be shared with third parties)

President: _____ Term _____ to _____

Is the current President a member of ASLTA? Yes _____ No _____

Vice-President: _____ Email: _____@_____

Secretary: _____ Email: _____@_____

Treasurer: _____ Email: _____@_____

PDC: _____ Email: _____@_____

Other(s): _____ Email: _____@_____

URL (if any): _____

Annual Chapter Fee: \$ _____ (\$35)

Donation: \$ _____

For office use only:
Thank you letter sent _____

TOTAL: \$ _____

For office use only:
____ Secretary Date rec'd _____
____ Treasurer Check nbr _____
____ Chapter Liaison Card sent _____

Be sure to visit our webpage often: www.aslta.org



DEADLINES FOR ARTICLES & ADVERTISEMENTS

March 1st
 June 1st
 September 1st
 December 1st

Advertising Donations

Full page = \$150
 ½ page = \$100
 ¼ page (this size) \$75

**ASL / Deaf Businesses show your support.
 ASL Clubs advertise your wares!**

Looking for a way to generate new customers? Want to keep your products in front of your current clientele? Want to launch something new? Let ASLTA help you increase your sales.

Our quarterly newsletter is read by teachers of ASL from all around the nation in winter, spring, summer, and fall. Our readership consists of 300+ teachers who purchase your products and then pass your contact information on to their students who, in turn, also purchase your products. And, as we all know, word of mouth – or, in our case, sign of hand – advertising is the most effective!

Each issue of the ASLTA News consists of 12-20 pages that measure 8 ½” x 11” per page. The ASLTA News is mailed, first class, not bulk! This puts your company’s name and information right in front of your customers!

Send your camera-ready copy (tiff, jpg, Word document, or Adobe .pdf) to **Cathi Bouton (ASLTA Treasurer)** via email: treasurer@aslta.org. Send payments to **Cathi Bouton, ASLTA Treasurer, P.O. Box 38, Clinton, WA 98236.**

Advertisements

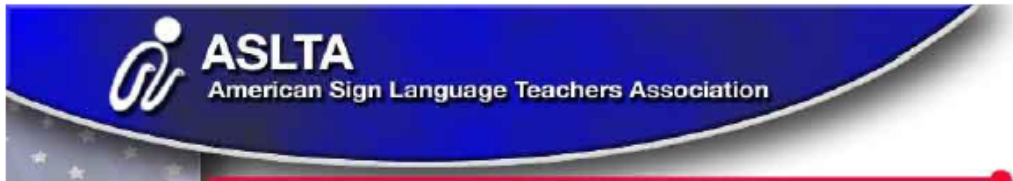
Donation	Size	Quarterly Deadlines	Annual Rates
\$150	Full Page (6.5”x9”)	MAR 1 – JUN 1 – SEP 1 – DEC 1	5% discount **
\$100	½ Page (vertical: 3.25”x9” or horizontal: 6.5”x4.5”)	MAR 1 – JUN 1 – SEP 1 – DEC 1	5% discount **
\$75	¼ Page (3.25”x4.5”)	MAR 1 – JUN 1 – SEP 1 – DEC 1	5% discount **

* Thirty days prior to publication.

** Ads will be updated if received prior to normal advertising deadlines. If not, the last quarter’s ad will be re-run.



2012 ASLTA MEMBERSHIP FORM



2012 ASLTA Membership
 P.O. Box 38
 Clinton, WA 98236

2012 Membership Application

To maintain valid certification [Provisional or Qualified or Professional], dues must be paid each and every calendar year.
 Dues cycle is based on annual calendar year. Payment is due in January.

PLEASE PRINT CLEARLY!

Member's Information:

Last: _____ First: _____

Address: _____

Main email: (for inclusion in our website news. This email is NOT shared with 3rd parties.)
 _____@_____

Other contact info: _____

Institutional Affiliation: _____

Membership Categories: (select one)	
Certified Membership (Voting) (for those who have been awarded ASLTA certification) Select your level: <input type="checkbox"/> Provisional <input type="checkbox"/> Qualified <input type="checkbox"/> Professional	\$ _____ (\$50) Certification Exp. Date: _____
Associate [Non-certified] Membership (Voting) (Non-certified ASLTA members, Aspiring Teachers, Mentors, Presenters)	\$ _____ (\$40)
Supporting Membership (Non-Voting) (for general public – non-teachers – who would like to lend support to the efforts of the national organization)	\$ _____ (\$25)
Institutional Membership (Non-Voting) (for organizations, schools, publishers, etc.)	\$ _____ (\$150)
Donation—please indicate choice: • General (unrestricted): \$ _____ • Thomas Riggs Chapter Fund (restricted): \$ _____ • Lawrence Fleischer and Lawrence Forestal Leadership Fund (restricted): \$ _____	\$ _____
For office use only: Thank you letter sent _____	
TOTAL:	\$ _____

Be sure to visit our webpage often:
www.aslta.org

For office use only:
 _____ Secretary
 _____ Treasurer
 _____ Member Coord
 Date rec'd _____
 Check nbr _____
 Card sent _____

Important Privacy Notice:
 ASLTA maintains a database of all membership information. This database is kept strictly confidential, with access only by members of the Board and the Membership Coordinator. However, when deemed appropriate by the Board, announcements or news may be sent via email to members on the list. If you wish to NOT receive any emails, Initial here: _____
 ASLTA may set up a membership directory on our website. Members' names, state of residence, and certification level may be published. If you do NOT wish to have your information in the directory, Initial here: _____ Lack of initials implies consent.

Be sure to visit our webpage often: www.aslta.org

American Sign Language Teachers Association
POB 92426, Rochester NY 14692-9998