



**ASLTA**

American Sign Language Teachers Association

**ASLTA News  
Spring, Volume 2011, No.2  
Table of Contents**

Articles	Page
ASLTA Awards	1
Officer's Reports	
President	3
Vice President	6
Secretary	6
Treasurer	7
Director's Reports	
Evaluation	7
Chapter Liaison	8
Professional Development	9
Committees	
ASL Honor Society	9
How to Contact ASLTA	5
Call for Board Nominations	10
Looking for Work?	11
Events for Students	12
Committee Assignments	14
Clock Hours Form	15
Workshops, Notices, Ads	15
SLPI Info	23
Need Research Participants	26
ASLTA PDC Info	27
Order ASLTA DVDs	35
Deadlines Articles & Ads	36
2010 Membership Form	37
Bylaws Current / Proposed	38
Bylaws Vote Form	47



**ASLTA  
Awards**

**2011 – 2013**

**Nominations  
Sought**



**Please read the descriptions below  
then send in a nomination today!**

**Nominators MUST be ASLTA mem-  
bers.**

**Please sign this form and email to:  
Brian Kilpatrick on or before May 31,  
2011. at [B.r.kilpatrick@lonestar.edu](mailto:B.r.kilpatrick@lonestar.edu)**

**T.J. O'Rourke Memorial Award**

This award honors Terrence James O'Rourke (1932-1992), rights activist, ASL teacher, publisher, advocate, and pioneer in setting up ASL programs in schools and having ASL officially recognized as a language. Given to an ASLTA member who has contributed tremendously to the field of ASL teacher education

**For the O'Rourke Award I nominate:**

Name: \_\_\_\_\_

Email: \_\_\_\_\_

Nominator's Signature & Date: \_\_\_\_\_



**ASLTA**

American Sign Language Teachers Association

**Stephan M. Ryan Teacher of the Year, I nominate:**

This award honors Stephan M. Ryan (1958-1995), ASL comedian, storyteller, and teacher in Gallaudet University's Center for Communication and ASL. Given to a person, ASLTA-certified, who has made major contributions to the cultural and humorous aspects of ASL instruction.

**For the Ryan Award I nominate:**

Name: \_\_\_\_\_

Email: \_\_\_\_\_

Nominator's Signature & Date:  
\_\_\_\_\_

**For George W. Veditz Award, I nominate:**

This award honors George W. Veditz (1861-1937), NAD president (1904-1910), remembered for his courageous leadership, advocacy, and efforts to preserve ASL by spearheading a film project. Given to an individual in recognition of his/her significant contributions to the field of ASL teaching

**For the Veditz Award I nominate:**

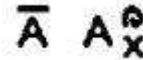
Name: \_\_\_\_\_

Email: \_\_\_\_\_

Nominator's Signature & Date:  
\_\_\_\_\_

**ASL Trivia**

Know what this is?



Email your responses to [asltamembers@yahoo.com](mailto:asltamembers@yahoo.com)

You could win a great prize! (Your name printed free in the ASLTA News, if you can identify what this and what it means!)

**TeachASL**

[www.teachasl.org](http://www.teachasl.org)

Encourages free exchange of ideas  
Maintains an [archive](#)

**To Join**

<http://listserv.valenciacc.edu>

Select the list you want (TeachASL)  
Select "Join or Leave"  
Add your name; pick your settings!

We recommend:  
Subscription: Regular or Digest  
Mail-Header: Listserv-style  
Acknowledgements: Receive copy



**ASLTA**

American Sign Language Teachers Association

## **ASLTA PRESIDENT'S MESSAGE**

**Larry Forestal, Ph.D.  
ASLTA Professional  
Surprise, AZ**



### **NOMINATIONS FOR ASLTA VICE- PRESIDENT AND TREASURER**

A call for nominations for the offices of Vice-President and Treasurer for a 4-year term (2011-2015) is now in effect until April 20, 2011.

Elections of Vice-President and Treasurer will be conducted by a mail ballot at least sixty (60) days prior to the biennial general business meeting of the ASLTA in Seattle on Thursday and Friday, June 30 and July 1, 2011. Each of voting members in good standing will have one mail ballot for Vice President and Treasurer on or before May 1, 2011. All voting members must return mail ballots to the Nominations Committee on or before May 31, 2011. Nominations Committee Chair Betsy Burks will announce mail ballot results on the ASLTA web site, in the quarterly newsletter, or during the general business meeting at the 2011 ASLTA conference.

Those ASLTA members who currently have the Professional-level certificate may choose to run for either Vice-President or Treasurer on or before April 20, 2011. Candidates will be asked by Nominations Chair Burks to pro-

vide biographical data about their experience, qualifications and signatures. ASLTA members in good standing may nominate names of candidates for Vice-President and/or Treasurer. An ASLTA member with the Professional-level certificate may self-nominate for the office of Vice-President or Treasurer.

On or before April 20, 2011, please mail nominations to: Betsy Burks, Nominations Committee Chair, 8400 SW Canyon Lane #5, Portland, OR 97225. You can also click "CONTACT US" on the home page of the ASLTA web site: [www.aslta.org](http://www.aslta.org) to send a message to Nominations Chair Burks.

### **INTERIM CHAPTER AFFILIATION CHAIR**

Secretary Dorothy Wilkins has agreed to serve as our Interim Chapter Affiliation Chair until after the ASLTA 2011 Conference in Seattle. She will prepare the Chapters Luncheon at the conference. She has made speedy contacts with the Chapter officers. Those individual members who currently hold the Professional-level ASLTA certificate may send a letter of interest in the Board position of Chapter Affiliation Chair along with a curriculum vitae including information about working relations with their affiliated chapters to the ASLTA Board as soon as possible.



**ASLTA**

American Sign Language Teachers Association

### **ASLTA SCHOLARSHIP BY SMI**

GOOD NEWS!!! Sign Media, Inc. is donating \$4,000 toward the ASLTA teacher certification of 24 ASL teachers! If you're interested in ASLTA teacher certification, please be sure to click on the application form on the ASLTA web site to view, print and submit the temporary application form to Sign Media Inc. Deadline is August 30, 2011. Please see [www.aslta.org](http://www.aslta.org).

SMI will announce the selections in September. The candidates who have the interviews in Seattle in June may still be eligible for SMI scholarships.

### **AMENDMENTS TO ASLTA BY-LAWS**

If you have suggestions as to how we could best amend our current Bylaws, please let Vice-President Glenna Ashton know as soon as you can. Please keep in mind that the new Bylaws amendments will be voted upon by the membership through a mail ballot prior to the Seattle conference on June 29-July 3, 2011.

### **PRESENT STATUS OF OUR 501 (C) (3) APPLICATION**

With our anticipation of receiving the 501 (c) (3) tax exemption from the IRS, we will become eligible for accepting donations and writing grant proposals.

For past five years NAD CEO Nancy Bloch has worked very hard to have us gain 501 (c) (3) tax exemption. Our key people are Vice-President Glenna Ashton, Treasurer Betti Bonni, and Newsletter Editor Alysse Rasmussen who have made a great deal of sacrifices.

### **NATIONAL DEAF HISTORY MONTH**

The ASLTA is advocating for the intent of the National Association of the Deaf in the pursuit of the National Deaf History Month proposal similar to the annual Black History Month. I believe that all national organizations serving the deaf should be fully committed to this important proposal. The NAD established an ad hoc committee to make it a reality by working with the Congress and the White House.



Do you sign your email with a cool proverb? FASLTA member ReBecca Paquette's does:

#### **Tibetan Proverb:**

**"Our hands exist so that our soul does not remain silent."**





**ASLTA**

American Sign Language Teachers Association

**in DVD** Searchable by title, duration, and subject.

Is your use of classifiers in ASL articulate? If you are interested in enhancing your skills, this DVD is for you!

**Pursuit of ASL: Interesting Facts Using Classifiers\***

with Angela Petrone Straty, M.Ed. DVD 080 044791.53 VHS 080 044791.11

**\$32.95 DVD, \$29.95 VHS**

Classifiers are challenging to execute well regardless of one's experience. Angela Petrone Straty, an eloquent native signer, presents 35 short passages incorporating classifiers within context.

Will appeal to a variety of individuals:

- Instructors of ASL and Interpreting
- ASL students (intermediate & advanced)
- Interpreters and Interpreting students
- Professionals who use ASL in their work
- Parents of deaf and hard of hearing children
- Literacy students studying ASL-English

Presents 35 passages chosen to illustrate a wide variety of classifier use. Topics include:

- Why do we get dizzy?
- How do brains form?
- How does the magician saw the woman in half?
- How was Velcro invented?
- How do light bulbs work?
- How do keys open locks?
- How do scorpions protect themselves?
- How to hang pictures evenly.

**Useful books** for practitioners, interpreting students, and educators

<b>Interpretation Skills: ASL to English</b>	<b>Interpretation Skills: English to ASL</b>
\$27.95	\$19.95

by Marty M. Taylor, Ph.D.

Interpretation is a very complex task. The criteria for competence in the interpretation field have often been vague. Although interpreters want to enhance their skills, this is difficult to achieve unless criteria are clearly defined. These books outline and describe the necessary criteria in a readable fashion. They provide important research-based insight into the key elements of skillful interpretation. In each book, over 40 skills are identified and explained. Helpful analysis of common interpretation errors associated with each skill is provided. The skills are sequenced from those required during parts of an interpretation (knowledge lean skills) to those required during the entire interpretation (knowledge rich skills). The texts are informative, useful and educational!

- Analysis of over 40 skills in each book
- Plentiful examples
- Comprehensive subject index
- A logical path of skill development
- Essential reference texts for your collection

To order, visit our website at: [aslininterpreting.com](http://aslininterpreting.com) or call 780.488.8698.

We accept check, money order, Visa or Mastercard.

**INTERPRETING CONSOLIDATED**



### HOW TO CONTACT ASLTA BY MAIL

Did you know that ASLTA now has three (3) different mailing addresses to ensure that we can respond to your needs quickly and efficiently?

#1. Please use the **Florida PO Box address** for membership dues, donations, checks, or bills from now on, effective on March 10, 2010:

**ASLTA Treasurer**  
**PO Box 20823**  
**St. Petersburg, FL 33742**

#2. Please use the **Rochester PO Box address** for letters for any information, inquiries, and requests, effective on March 10, 2010.

**ASLTA Correspondence**  
**PO Box 92426**  
**Rochester, NY 14692**

#3. Please use the **North Carolina address** for all evaluations and certifications as usual.

**ASLTA Certification**  
**PO Box 39**  
**Newell, NC 28126**

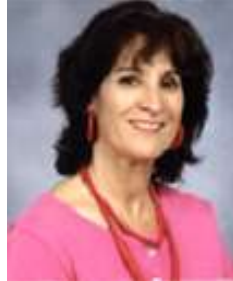


**ASLTA**

American Sign Language Teachers Association

## VICE PRESIDENT'S REPORT

**Glenna Ashton, Ed.S.**  
**ASLTA Professional**  
**Valdosta, GA**  
**Boca Raton, FL**



The ASL National Standards have wrapped up their committee work with final productive meetings in Rochester and Charlotte. The final standard document is being reviewed by the Standards Collaboration Board reviewer before it goes to publication sometime in 2011. There will be further information at the Seattle conference.

The 501c3 application is also getting a final updating and review before sending it to IRS very soon. We consulted with a CPA several times.

There is one major change being proposed for the ASLTA bylaws in that the Certification Chair would be removed from the Board and become a paid Coordinator position. The new Board member would be a Member-at-Large representing a section not covered by other Board members (such as teaching level or region). Please see the full information on the proposed change elsewhere in this newsletter.

I will be ending my term at the Seattle Conference this summer. I have served as a Treasurer, President, and Vice-President on the ASLTA Board from 2004 to 2011. Previously, I was Presi-

dent of Florida ASLTA for 10 years. It has been a pleasure serving the Boards and the members in meeting our mission and goals. Now, I must take a break and complete my doctoral studies finally.



## ASLTA Secretary

**Dorothy M. Wilkins**  
**ASLTA Professional**  
**Rochester, NY**



## ASLTA E-Motions from November 2010 to March 2011

ASLTA Board members had made 3 different motions since our board meetings in San Antonio, Texas during the CIT Conference.

### **E-Motion: Developing a Language for the Bylaws Committee**

**December 4, 2010**

Keith Cagle made a motion that Glenna Ashton, the By-Laws chairperson, will lead on developing a language for an amendment to By-Laws Article VII - Election and Appointment of Board Members. Then her committee sent a ballot to all ASLTA members by February 1, 2011 to vote on replacing the position of Evaluation and Certification Chair with an "At-Large Member" in the By-Laws. Carried.



**E-Motion: New Evaluator Training  
December 4, 2010**

Keith Cagle made a motion that we will have a two-days training with four new evaluators in May 2011 in Charlotte, NC. The expense will be \$3,000 for their transportations, three nights of motel rooms and three days of meals. Carried.

**E-Motion: ASLTA Evaluation System  
Committee**

**December 4, 2010**

Keith Cagle made a motion that we will request Glenna Ashton, Rachel Stone, Leslie Greer, Bill Newell and one new evaluator to serve on the ASLTA Evaluation System committee. And that they and I will confer for up to two days prior to the Seattle conference in June 2011. The expense will be \$3,000 for half of the transportation expenses, two nights of hotel rooms and two days of meals. Carried.

Please log on the ASLTA website and read the 2009 ASLTA General Business Meeting Minutes from Phoenix, Arizona.



**ASLTA Treasurer**

**Betti Bonni, MA  
ASLTA Professional  
Pinellas Park, FL**



**Remember to send in your 2011 re-  
newal dues.**



**ASLTA Evaluation  
Chair**

**Keith M Cagle, Ph.D.  
ASLTA Professional  
Newell, NC**



At the end of 2011, LaVerne Cagle, an assistant, counted and reported that we have 354 certified members with a good standing with ASLTA membership. The breakdown of the number is as follows:

Professional level -	91
Qualified -	82
Provisional -	181

Eight ASLTA evaluators reviewed nine candidates for new evaluator training in Charlotte, NC on May 20-22, 2011. The board approved adding one more evaluator for the training. The 5 final candidates are Brian Kilpatrick of Texas, Lisa



**ASLTA**

American Sign Language Teachers Association

Johnston-Nakis of New York, Christine Kraft of Indiana, Sharon Lott of North Carolina and Amy Rowley of California. Congratulation and welcome them to the team.

Chuck Gramly of Columbia, Ohio and Jan McCready-Johnson have decided to retired from ASLTA Evaluation service. They had served for the team for many years. Chuck has served since 1988. Jan has served since 2000. They had been the outstanding evaluators Chuck earned Alan Barwiolek Award for being an outstanding Evaluator in 2004 and Jan earned the same award in 2009. Salute them for their invaluable dedications to ASLTA evaluation.

Professional-level evaluation through interview will be conducted on June 29-30th at the national ASLTA Professional Development conference in Seattle, Washington.

A reminder that effective on July 1, 2012, new candidates for Provisional level evaluation will have to possess at least bachelor degree. The ASLTA board approved this new requirement in 2007.

Have a good and productive spring semester. See most of you in Seattle!



### **Interim Chapter Liaison**

**Dorothy M. Wilkins  
ASLTA Professional  
Rochester, NY**



I am an interim Chapter Affiliated Chair until the ASLTA conference. I have contacted all of the chapters through emails in March 2011. There is another avenue to complete the paperwork by saving trees. Log on the ASLTA website and download the Biennial Review of ASLTA Chapter and Chapter Affiliated Fee Form in .pdf.

During the ASLTA General Business Meeting, I will give the Chapter Affiliated Report that includes general information about each chapter. There are couples of items that I would like you to complete the paperwork before the conference.

1. Each Chapter will fill out and submit the Biennial Review of ASLTA Chapters by **Friday, April 29, 2011**.
2. Each Chapter will pay \$35 for Chapter Affiliated fee each year.
3. The Chapter Luncheon will be held on July 1<sup>st</sup> from 11:30 to 1 p.m. It is INVITED only. Each Chapter will select up to two representatives to attend the Chapter Luncheon during the conference. Watch for The Chapter Luncheon Form which will be posted on the ASLTA website soon.





**ASLTA**

American Sign Language Teachers Association

Please send the attachments of the paperwork to Dorothy M. Wilkins at [yogangel@aol.com](mailto:yogangel@aol.com) by **April 29, 2011, Friday**. Or, mail the paperwork to:

Dorothy M. Wilkins  
Interim Chapter Affiliated Chair  
ATTN: Chapter Affiliated  
PO Box 92426  
Rochester, NY 14692



**Professional  
Development Chair**

**Arkady Belozovsky  
ASLTA Professional  
Framingham, MA**



Please type these URLs to see videos  
– ALSTA Proposal

<http://www.youtube.com/watch?v=qkhUNBR6fwY&feature=email>

– 2011 ASLTA Conference for Everyone:

<http://www.youtube.com/watch?v=lrRDaRbo9F8&feature=email> and visit

our FaceBook page at :

[www.facebook.com/2011asltaconference](http://www.facebook.com/2011asltaconference)




## COMMITTEE REPORTS:



**ASL Honor Society  
National Coordinator  
Jason E. Zinza, MA**

The ASL Honor Society is a program offered by ASLTA that recognizes high academic achievement and Deaf community service by ASL students. ASL students who study ASL for 2+ years with high grade point averages are eligible to receive the Laurent Clerc or Alice Cogswell Medals, and high school students may earn honor cords.

In addition to recognizing academic achievement, the ASL Honor Society also offers scholarships for students. The minimum scholarship amount is \$1,000.00 per student. Students majoring or minoring in ASL, Deaf Studies, Deaf Education, and Interpreter Preparation / Training are eligible to apply. Don't let your students miss out on this tremendous opportunity!

High schools, community colleges, schools for the Deaf, and universities are joining the ASL Honor Society to encourage students to pursue ASL studies, participate in the annual ASL Literature Competition, and reward high academic achievement. Join ASL Honor Society today to allow your students to take advantage of these opportunities brought to you by ASLTA. 



**ASLTA**

American Sign Language Teachers Association

## **A CALL FOR NOMINATIONS FOR ASLTA VICE-PRESIDENT AND TREASURER**

On August 31, 2010, the membership of the ASLTA ratified the Bylaws of the ASLTA revision proposal by a mail ballot.

Under Article VII about Election and Appointment of Board Members, the Nomination Committee composed of three Professional-level certified members will be appointed by the Board of Directors shortly. A call for nominations for the offices of the Vice-President and Treasurer is in effect now.

Further information will be announced on the ASLTA web site and in the spring issue of the ASLTA Newsletter. Next biennial general business meeting will be held during the sixth National Professional Development Conference at Seattle on June 28-July 3, 2011. Nominations Chair and Committee will be announced on the web site.

Nominations from the membership must be submitted to the Nomination Committee at least three (3) months prior to the biennial general business meeting. It means that the Nomination Committee must receive nominations for the Vice President and Treasurer on or before March 29, 2011. Nominees for the offices of the Vice President and Treasurer will be asked to provide the Nomination Committee with biographical data about their experience, qualifications and signatures.

Elections will take place by email or online ballot at least sixty (60) days prior to the biennial general business meeting on June 29, 2011. All voting members in good standing will have one ballot for the offices of the Vice President and Treasurer on or before April 27, 2011. The voting members must return ballots to the Nomination Committee at least thirty (30) days prior to the biennial general meeting which will be on or before May 27, 2011.

Election results will be announced at the biennial general business meeting of the ASLTA in Seattle, in the newsletter, and/or on the web site. Those ASLTA members who currently have the Professional-level certificate are very much encouraged and urged to seriously consider running for the offices of the Vice-President and Treasurer as soon as possible.

Lawrence H. Forestal  
President, ASLTA



**ASL HS Medallions**



**ASLTA**

American Sign Language Teachers Association

## Looking for Work?

Check out ASLTA's Website for complete details and current job openings: [www.aslta.org](http://www.aslta.org)

### MIAMI DADE COLLEGE

*Faculty, Sign Language Interpretation,  
Position # - 229202*

To apply for this position, please visit our Employment website: [www.mdc.jobs](http://www.mdc.jobs)

Miami Dade College [www.mdc.edu](http://www.mdc.edu)



**Application Procedure:** Applications must be submitted online at [www.wpcc.edu](http://www.wpcc.edu).

### For More Information Contact:

Ms. Anita Berry  
Human Resources Assistant  
Western Piedmont Community College  
1001 Burkemont Avenue  
Morganton, NC 28655  
(828) 448-3127

### WILLIAM WOODS UNIVERSITY

*Asst Professor, ASL & Interpreting Program*

Send letter of interest, curriculum vita and three professional references to:  
Human Resource Office  
REF: Assistant Professor American Sign Language and Interpreting Program  
William Woods University  
One University Avenue  
Fulton, MO 65251

Contact:  
[Kathy.Groves@williamwoods.edu](mailto:Kathy.Groves@williamwoods.edu)

### AMERICAN RIVER COLLEGE

*Sign Language Assistant Professor*

### How and where to apply:

To apply, please visit <http://apptrkr.com/179141>. Application services are available between 7:30 a.m. and 5:00 p.m. (PST), Monday through Friday, at the Los Rios Community College District Human Resources Office located at 1919 Spanos Court, Sacramento, CA 95825-3981. If you need assistance with any phase of the application process, please call (916) 568-3112 or come in during our business hours. Submission of applications is by midnight of the posting closing date.



**ASLTA**

American Sign Language Teachers Association

**UNIVERSITY OF NORTH FLORIDA**  
*Instructor of American Sign Language*

### How to Apply

- Applicants must apply online at <https://www.unfjobs.org/>  
Search position #322280
- Applicants must submit all required documents to be considered for this position.

UNF is an Equal Opportunity/Equal Access/Affirmative Action Institution.

Please address questions to

**Dr. Sherry Shaw, Search Committee Chair**, at [Sherry.Shaw@unf.edu](mailto:Sherry.Shaw@unf.edu)



College of Education, Criminal Justice, and Human Services  
School of Education  
University of Cincinnati  
PO Box 210022  
Cincinnati, OH 45221-0002  
Suite 615 Teachers College  
2610 McMicken Circle  
(513) 556-3600  
(513) 556-1001 Fax

### **Assistant Professor - Sign Language**

To apply for position **(210UC1835)**, please see [www.jobsatuc.com](http://www.jobsatuc.com)

The University of Cincinnati is an affirmative action/equal opportunity employer. UC is a smoke-free work environment.



### **Events for Students:**

Christine Gouker  
<[cgouker@optonline.net](mailto:cgouker@optonline.net)>

I am a member of NJRID and volunteer for the Committee for the Real ASL Weekend being hosted by NJRID and NJAD ... This event will take place on October 15 and 16, 2011.



*Working with you to educate ASL students in college, university,  
and high school classrooms across the U.S. and Canada.*

*Proud ally of the Deaf Community since 1979.*

## Attention ASLTA Members!

**Sign Media, Inc. is donating \$4,000 toward the certification of 24 ASL teachers.**

Eight scholarships will be awarded at each level — Provisional, Qualified and Professional — for a total of 24 scholarships. Applications will be randomly selected to win the scholarship. Please check the level you are applying for.

- Provisional Level \$125 each
- Qualified Level \$125 each
- Professional Level \$250 each

**Requirements** – One entry per person.

- All applicants must be current ASLTA members at the time the application is submitted. Membership will be verified by ASLTA and if not current, scholarship will be forfeited.
- Application must be completed and returned to Sign Media by August 30, 2011.
- Winners will be notified by September 10, 2011. If all scholarships are not awarded by September 10, the application process will remain open until all scholarships are awarded.
- Deadline to apply for certification is 12/31/2012 or forfeit award.
- All applicants must meet requirements for each certification level as set forth by the ASLTA certification evaluation system.

Name \_\_\_\_\_

Address \_\_\_\_\_

City \_\_\_\_\_ State \_\_\_\_\_ Zip Code \_\_\_\_\_

Email Address \_\_\_\_\_

Phone \_\_\_\_\_

I teach:       ASL Level 1       ASL Level 2       ASL Level 3

Name of School or Institution \_\_\_\_\_

Address \_\_\_\_\_

City \_\_\_\_\_ State \_\_\_\_\_ Zip Code \_\_\_\_\_

RETURN BY August 30, 2011 to: Sign Media, Inc., 4020 Blockburn Lane, Burtonsville, MD 20866-1167



## ASLTA Committee Assignments and Contractual Agreements in 2009-2011 and Beyond

<u>Committee</u>	<u>Description and Function</u>	<u>Chair/Who is responsible?</u>	<u>Timeline</u>
Sixth ASLTA NPDC in Seattle	Planning a biennial conference for national professional development	Chair Barbara Hayes	June 28-July 3, 2011
Bylaws of the ASLTA	Bylaws revision and update as needed (mail ballot pending)	Vice-President Glenna Ashton	On a regular basis
501(c) (3)	IRS Nonprofit Exemption incl. application packet, financial reports, bylaws	Glenna Ashton, Betti Bonni, Alysse Rasmussen & ASLTA Board	ASAP
Legislative	Monitor national and statewide legislation: ASL Standards, teacher certification, curriculum	ASLTA Board; High Priority: National Deaf History Month with ASL Emphasis via NAD	On a regular basis
Chapter Affiliation	Maintain contacts and communications with ASLTA chapters	Secretary/Interim Chapter Affiliation Chair Dorothy Wilkins	On a regular basis
Professional Development	Work with Chair of the biennial NPDC for Call of Papers, Workshop Schedule and Assignments	PDC Arkady Belozovsky (assist biennial conferences and ASLTA chapters with professional development)	On a regular basis
ASLTA Teacher Certification	Evaluation and Certification of ASL Teachers	Certification Chair Keith Cagle and Evaluators (Provisional, Qualified, Professional, SLPI,/ASLPI, L1)	On a regular basis
ASL Standards	Draft and publish national ASL standards for the ACTFL standards book	Glenna Ashton, Keith Cagle, Bill Newell, Kim B. Kurz, Rico Peterson & Jason Zinza	On a regular basis
ASL Honor Society	Oversee the National ASL Honor Society programs incl. HS and college chapters	Chair Jason Zinza (graduation cords & medals, scholarships, annual ASL Literature competition)	On a regular basis
JCNL and MLA	Develop scholarly writing materials and activities, for example, journal articles, periodicals or books	Representatives Glenna Ashton and Arkady Belozovsky	May 2011
NAD Conference	Represent ASLTA as a delegate to the NAD Conference	Representative Larry Forestal (ASLTA is an affiliate of the NAD.)	July 2012
ASL & Institutes of Higher Education for ASL	IHE Survey to advocate ASL as a foreign or world language for entry and exit	Alysse Rasmussen	Continual until completed
Newsletter	ASLTA Newsletter	Editor Alysse Rasmussen (Editor is paid per issue.)	Quarterly
ASLTA Web Site	ASLTA Web Site for information sharing and vlogs	Marvin Herbold (on contract)	On a regular basis
Membership	Maintain and update membership lists including active, associate, honorary, and organizational members; affiliated chapters, and other related functions	Membership Coordinator LaNae Phillips	On a regular basis



**ASLTA**

American Sign Language Teachers Association

## The most user-friendly ASL curriculum just got even better!



### Success is easy with the newly updated Bravo ASL curriculum.

Use the colorful graphics on the NEW interactive slide presentation to effortlessly introduce vocabulary and grammar in a natural way...using ASL.

The comprehensive Bravo ASL Curriculum now gives you hours of digital media that supports you and your students' success!



**HARRIS**  
COMMUNICATIONS

Main Distributor of Sign Enhancers Products

**Order now for fall classes! No. CURR-P(V4) \$999.00 Sale! \$949.00**

**Go online: [www.signenhancers.com](http://www.signenhancers.com) or Call us: (800) 767-4461**

Look for our booth at the CIT/ASLTA Conference in October!





**ASLTA**

American Sign Language Teachers Association

*Come and see the preview of*  
**Master ASL! Level Two**  
*at the ASLTA Conference in Seattle.*

**Register for the  
Pre-Conference Workshop on June 29  
and visit the Sign Media booth  
for more surprises!**



4020 Blackburn Lane · Burtonsville, MD 20866-1167 · (800) 475-4756 · Fax: (301) 421-0270 · [SignMedia.com](http://SignMedia.com)





**ASLTA**

American Sign Language Teachers Association

# IMPROVE YOUR SKILLS AT THE VRS INTERPRETING INSTITUTE

A world-class training facility for ASL interpreters.

**VRS Interpreting Institute**  
Empowering Interpreters and Educators™

The VRS Interpreting Institute (VRSII) is a world-class training facility dedicated to life-long ASL interpreter training and mentoring. ASL interpreting educators, register now for:

**Interpreter and Language Mentoring, May 13 – 15**

**Instructor:** Cindy Farnham, Master Mentor; RID CI, CT

**Faculty Collaboration Training, June 24 – 26**

**Instructor:** Charlotte Toothman, CPCC; MA

*"The VRSII is a one-of-a-kind facility, with endless possibilities for empowering interpreters and educators. They are making a difference in the field. Participate!"*

**- Marty Taylor,  
Ph.D., Interpreting  
Consolidated**

For more information about ASL interpreting student and educator classes, visit [www.vrsii.com/curriculum](http://www.vrsii.com/curriculum).

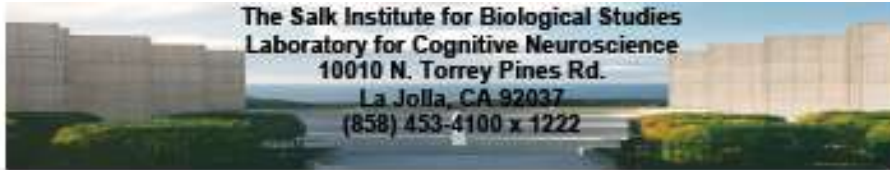
© 2011 VRS/Interpreting, Inc. All Rights Reserved.

3



**ASLTA**

American Sign Language Teachers Association



If you or anyone you know **has had a stroke**, we can provide you with information about **stroke and aphasia**

**Please contact us!**

- Get more information about stroke and aphasia
- Provide your contact information to participate in future studies

#### Did you know?

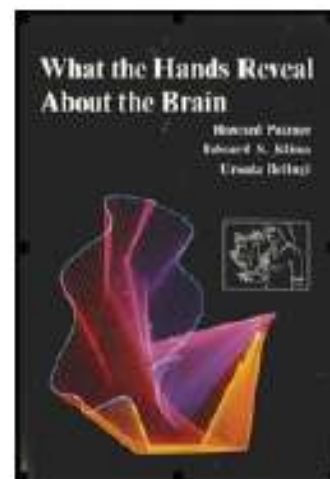
- "Aphasia" is a language and communication disability caused by brain damage that affects 1 million Americans.
- Stroke is the most common cause of aphasia.
- Stroke can affect the ability to use sign language.

#### Our Goal

- To understand the effects of stroke on sign language ability so that Deaf people with aphasia can receive better care.

#### Who we are

- We are a team of Deaf and hearing researchers who have been studying sign language for more than 20 years.



**SIGN UP IN ADVANCE WITH THE SALK RESEARCH TEAM!**

**Videophone: 858.768.0476**

Cindy Batch - [cbatch@salk.edu](mailto:cbatch@salk.edu) or Erica Parker - [eparker@salk.edu](mailto:eparker@salk.edu)

Cindy Batch,  
Senior Research  
Assistant



Erica Parker,  
Research  
Assistant



IRB Approval 092810



**ASLTA**

American Sign Language Teachers Association

# 15-Month Summer/Online Masters In Sign Language Teaching\*



## Mission Statement

Gallaudet University's Departments of ASL and Deaf Studies is dedicated to providing the most comprehensive, challenging, and productive ASL and Deaf Studies curriculum anywhere in the world. Expert faculty will guide students to explore the complexities of Deaf communities and their signed languages through interdisciplinary approaches.

\*pending approval of the Board of Trustees, February 15, 2011

## Program Description

The Department of American Sign Language and Deaf Studies offers a M.A. degree in Sign Language Teaching. Students will be introduced to key theoretical and methodological issues involved in sign language instruction including curriculum development, assessment, and incorporating Deaf culture into the language curriculum. Students will undertake a teaching practicum and internship under the supervision of a cooperating teacher. An electronic portfolio is required at the completion of the program, representing the culmination of the student's academic performance.



## Sign Language, the 4th Most Studied Foreign Language

"ASL is close to surpassing German as the third most-studied foreign language at America's colleges and universities." - USA Today



## Colleges See 16% Increase in Study of Sign Language

"Sign language professors suggested various reasons for the rise. They said it reflected the growing acceptance of ASL, to meet college foreign-language requirements, and its usefulness as an employment credential - not only for interpreters, but also for cognitive psychologists, educators, nurses and even social workers." - New York Times



**ASLTA**

American Sign Language Teachers Association

# Masters in Sign Language Teaching

## 15-Month Summer/Online



Graduates from the Sign Language Teaching Program will:

- Demonstrate theoretical knowledge and display competence in classroom settings regarding methodological and sociopolitical issues involved in sign language teaching, curriculum development and assessment
- Produce graduate level Sign Language and English texts that demonstrate knowledge of and critical inquiry into key concepts in the Sign Language Teaching field
- Recognize the importance of the ASL teacher as a system change agent and apply this in practice using effective leadership, advocacy, consultation, and collaboration to influence change on the individual, group, and organizational and systemic levels

Summer I	
June 13 - 24	ASL Media Production (3) Methods of Second Language Teaching (2)
July 11 - 22	Sign Language Linguistics for Signs Language Instructors (3) Curriculum Development for Second Language Instruction (2)
July 25 - Aug 18	Seminar in Sign Language Teaching (3) Sign Language Teaching Practicum (2)

Fall and Spring Online Courses	
Fall Semester	Signs & the Philosophy of Language (3)
Spring Semester	Sign Language Planning & Advocacy (3)

Summer II	
Last two weeks of June	Literary Traditions in the Deaf Community (2) Introduction to First and Second Language Acquisition (2)
First two weeks of July	Critical Pedagogy (2) Assessing Second Language Skills (2)
Mid-July to mid-August	Sign Language Teaching Immersion (2)



**Application for Graduate Admission**  
 Visit the Graduate Admissions website for more information and for a checklist of general application requirements: <http://introtoasltamembership/signlanguageadmission.html>  
 \*Application available online after Board of Trustees approval (2/15/11)  
 - DEADLINE MARCH 1ST -

**Application for Program Admissions:**  
 \* Online video answering essay questions  
 \* Documentation of required prior experience  
 For more details about the program requirements, visit <http://introtoasltamembership/signlanguageadmission.html> or contact the ASL program coordinator, [Bartholme Harris@asltatrust.org](mailto:Bartholme.Harris@asltatrust.org)  
 - DEADLINE FEBRUARY 1ST -

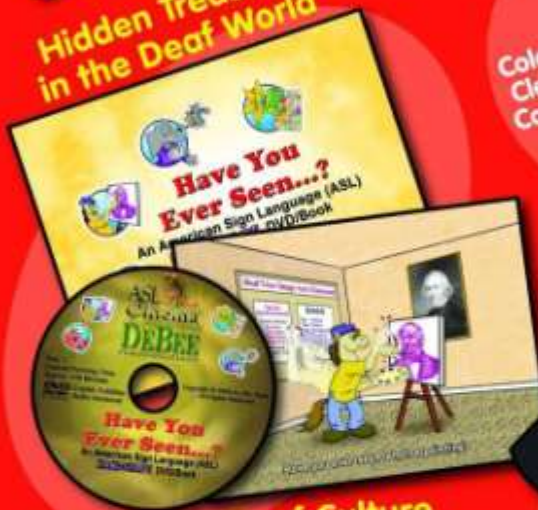


**ASLTA**

American Sign Language Teachers Association

# Know what! ASL ROSE PRODUCTS SEE-MUST! KISS-FIST! JAW-DROP!

Hidden Treasure  
in the Deaf World



**ASL & Deaf Culture  
Enlightenment**

- Enjoyable for all ages
- Full color animated illustrations
- ASL-English bilingual DVD/book
- Diversity of young signers in the DVD



Powered by ASL



Be with ASL Rose!

ASL + Rose =  
Double Beautiful!

To ORDER, go to our ASL Rose store at [www.aslrose.com](http://www.aslrose.com)

ASL Rose  
 P.O. Box 614  
 Frederick, Maryland 21705-0614  
 Video Phone: (240) 575-2130  
 Toll Free Voice Message: (866) 680-6398  
 Fax: (866) 311-8313

**ASL Rose**  
 View ASL. Read English.  
 Be Bilingual-Bicultural!



**ASLTA**

American Sign Language Teachers Association

## Digital tools for sign language studies.

Whether the focus is on basic communication in American Sign Language or advanced proficiency for career-path interpreter training, the Sony Virtuoso™ and Soloist® ASL digital language lab software suite can give your students the competitive edge. Capture high quality video and audio; simulate real-life interpreting situations for practicum skill development; create digital student portfolios; and easily save, review and assess student work digitally. Be progressive with our digital tools to positively impact your language program and student performance.



*"The Sony software is a vehicle for instructors to use as an assessment tool in order to provide critical feedback to aid in the development of American Sign Language and interpreting skills."*

**Kathy Basilotto, CI, MEd.**  
Assistant Professor  
Interpreter Training Program  
Ocean County College, NJ



[www.sansinc.com](http://www.sansinc.com)  
Ask us for a demo at  
[sales@sansinc.com](mailto:sales@sansinc.com)



Software  
And  
Network  
Solutions  
Interactive Technology  
For Sign Language Studies

©2010 SANS Inc. Virtuoso and Soloist are trademarks of Sony Electronics Inc. SANS products incorporate SANS and Sony technology.

# ASLTA's 6th Professional Development Conference

## June 29-July 3, 2011

### We've got *EVERYTHING!*



**ASLTA**

American Sign Language Teachers Association

**NCASLTA**

north carolina american sign language teacher's association

FOUNDED 1994

## ASLTA 2011 CONFEREES

### The National SLPI:ASL Service

The SLPI:ASL interviews will be provided at  
ASLTA conference in Seattle from  
June 29, 2011 to July 3, 2011

*If you prefer you may have the service  
through videophone  
before or after the conference*

To set an interview appointment contact:

Cindy Decker-Pickell, NC-ASLTA  
National SLPI:ASL Service Coordinator  
[nationalslpiasl@gmail.com](mailto:nationalslpiasl@gmail.com)  
by May 31st

The fee for a full report with diagnostic feedback is \$125

The fee for a report informing you of the rating you achieved is \$85

If you chose the \$85 option, and later you want the diagnostic feedback, the upgrade fee is \$105

NC ASLTA is the host of 2013 National ASLTA conference in  
Charlotte, North Carolina



**ASLTA**

American Sign Language Teachers Association

## **NC ASLTA renamed its NC ASLTA SLPI ASL to National SLPI ASL Services**

On January 28, 2011, historically the NC ASLTA board with Sharon Lott as newly elected NC ASLTA President approved to rename its NC ASLTA SLPI to **National SLPI ASL Services** and to include other States' SLPI ASL teams. A long term plan is to invite other SLPI ASL teams out of States to join in to meet a future growing demand nationwide.

SLPI: ASL in North Carolina has a long history since 1994. The first SLPI: ASL team was established at Eastern North Carolina School for the Deaf in 1994 through the training provided by Dr. Bill Newell and Dr. Frank Caccamise of the National Technical Institute for the Deaf (NTID). Later other SLPI: ASL teams were established in North Carolina School for the Deaf in Morganton and Central North Carolina School for the Deaf in Greensboro. The North Carolina State Division of Services for Deaf and Hard of Hearing (DSDHH) has been promoting the use of SLPI: ASL in the schools and community services with the deaf and hard of hearing population. Later in 2000, the Deaf Specialists in several Regional Resources Centers for Deaf and Hard of Hearing (RRCDHH) under DSDHH formed the SLPI: ASL teams to serve community, colleges and universities and professionals working out of the schools for the Deaf.

Later in 1998, Gardner-Webb University in Boiling Springs, North Carolina formed its own SLPI: ASL team.

The requests for SLPI: ASL service has been growing tremendously and put additional burden on the Deaf specialists as the SLPI: ASL interviewers and raters at RRCDHHs.

And in 2008 importantly the North Carolina Department of Public Instruction (commonly known as Dept of Ed in other states) and State Board of Education approved to require K-12 ASL teachers to have ASLTA Provisional certification.

Starting on January 1, 2009, the national ASLTA started requiring SLPI: ASL or ASLPI for ASLTA Provisional certification. ASLTA Provisional evaluation requires either ASLPI with a rating of 3+ or SLPI ASL with a rating of Advance Plus. Some candidates in North Carolina asked where they could get ASLPI or SLPI ASL before they apply for ASLTA evaluation.

The concept of providing SLPI: ASL service through a webcam was initiated by Dr. Bill Newell who at that time worked in Valdosta State University. Later James Womack of College of South Nevada (CSN) pursued this concept. In October 2007, Dr. Keith M. Cagle provided the SLPI: ASL training for CSN faculty and staff, and then introduced Kathy Apperson of Charlotte, NC to James Womack to start the concept of performing SLPI: ASL through video-phone nationwide. Tom Riggs of Arizona and Kathy Apperson expressed an interest in coordinating with the raters in





their States; however James Womack has moved to Kentucky and this idea was put on a burner.

In response to the new requirement made by State and growing demand of SLPI: ASL service statewide, NC ASLTA started exploring a concept of providing SLPI: ASL through video-phone. Then in August 2008, NC ASLTA under James Wilson as its President approved and formed the new SLPI ASL team. They appointed Kathy Apperson as the first coordinator. The first NC ASLTA SLPI ASL interviews were conducted in winter 2009. NC ASLTA SLPI: ASL has four teams in Morganton, Charlotte, Raleigh and Wilson with 15 interviewers and raters (14 deaf and 1 CODA). All of them possess the rating of Superior Plus. Aside, there are approximately 35 SLPI: ASL interviewers and raters in NC (e.g. DSDHH, RRCDHH, schools for the deaf and GWU).

NC ASLTA SLPI: ASL has been successful with a contract with Louisiana

School for the Deaf and providing the SLPI ASL interviews to many candidates from at least 15 States. The demand has been steadily growing. NC ASLTA SLPI ASL is in a process in getting a contract with another state school for the deaf and two universities.

In November 2010, Kathy Apperson completed her term and Cindy Decker-Pickell of Wilson assumed as the new coordinator of NC ASLTA SLPI: ASL.

National SLPI: ASL Services will provide its service at the national ASLTA conference in Seattle. For more information about National SLPI ASL Services, see [www.ncaslta.org](http://www.ncaslta.org) and Cindy Decker-Pickell's email address is [NationalSLPIASL@gmail.com](mailto:NationalSLPIASL@gmail.com).

National SLPI ASL follows the NTID SLPI ASL procedure for interviewing and rating. For more information about NTID SLPI ASL, here is a link: <http://www.rit.edu/ntid/sipi/>.



**ASLTA**

American Sign Language Teachers Association

**Participants Needed for  
Research Study on  
Leadership in Professional Associations**

I will distribute surveys for my dissertation research study on *Deaf Leaders: The Intersections of Deaf Culture, Leadership, and Professional Associations*. Links to online surveys will be available. This study is being conducted as part of the requirements for earning a Ph.D. at Union Institute & University in Cincinnati, Ohio.

My objective is to find out what makes you a **leader!** I want to find out whether a difference exists between Deaf and hearing leader personalities in professional associations due to certain factors. To find the answers, I will use a demographic survey and two personality surveys to be given online. Everything will be handled confidentially and anonymously. User IDs (number codes) will be assigned to all completed surveys. All your responses will be confidential, and no one will be able to distinguish your responses from any other participants' responses. Your total time commitment with this study may be from 60 to 90 minutes.

If you can answer yes to all of the following questions,  
you are eligible to participate in this study!

Are you between the ages of 18 and 80?

Are you deaf, hard of hearing, or hearing?

Are you actively involved in FASLTA, ASLTA, RID, CIT, or its chapters?

Are you or were you ever an elected officer or a chairperson of one of these organizations?

If you have questions or are interested in participating in this study, please contact me at [glenna.ashton@email.myunion.edu](mailto:glenna.ashton@email.myunion.edu). If you agree to participate, I will send you the materials that include an informed consent letter and access information to the online surveys.

Thank you!

Glenna R. Ashton



**ASLTA**

American Sign Language Teachers Association



Teaching to the Next Level

WA ASLTA proudly hosts

## **ASLTA 2011 CONFERENCE**

**6th National Professional Development Conference**

June 29 - July 3, 2011

Renaissance Seattle Hotel

[www.aslta.org](http://www.aslta.org) • [www.facebook.com/ASLTA2011conference](http://www.facebook.com/ASLTA2011conference)



**ASLTA**

American Sign Language Teachers Association





# ASLTA

American Sign Language Teachers Association



## AMERICAN SIGN LANGUAGE TEACHERS ASSOCIATION 6<sup>TH</sup> NATIONAL PROFESSIONAL DEVELOPMENT CONFERENCE



June 29 -July 3, 2011 Renaissance Seattle Hotel Seattle,  
Washington

Our conference of ASL teachers, researchers and curriculum developers is the perfect place to showcase your resources and show your support of the profession. In addition to your presence, please consider the following sponsorship opportunities.

### Sponsorship

Platinum, \$10,000 or more; Gold, \$5,000 -\$9,999; Silver, \$1000 -\$4,999; Patron, \$100 -\$999 For  
Sponsorship information -Conference Chair Barbara Hayes [asltachair@att.net](mailto:asltachair@att.net)

### Exhibit Booth

Corporate \$350; Non-Profit \$200; Small Business \$200. Listed prices are for 1 table, paid prior to March 31, 2011. Prices increase by \$50 on April 1, 2011. Additional tables available for \$50 each. For Exhibit booth information -Conference Exhibit Coordinator, Karen Rosenthal, [klrofwa@yahoo.com](mailto:klrofwa@yahoo.com)

### Program Book

The program book will be 8 1/2 by 11 and in full color. Camera ready copy to be provided by your company no later than May 15, 2011. Full page \$150; Half page \$100; one fourth page \$75; business card size (3.5 x 2) \$25

### Promotional Literature Stuffing

We will insert literature or premiums (pens, notepads, etc.) advertising your organization, products, and/or services into the bags each participant at the conference receives. This service is available for just \$100 for single sheet, \$200 for multiple sheets or catalog and \$150 for premiums.

### In-Kind Donations

You may choose to give the conference a gift from your company to be included in the aforementioned bag.

For Program book advertising, literature inserts or in-kind donations information due May 15, 2011  
Conference Secretary, Cathi Bouton, [CathiB@VisualizeASL.com](mailto:CathiB@VisualizeASL.com)

All donations are tax deductible. All donors and sponsors will have their (company's) name printed in the program book. The size and placement of the recognition is determined by the size and type of contribution/sponsorship.



Hosted by the WA ASLTA Chapter [www.aslta.org](http://www.aslta.org)  
[www.facebook.com/ASLTA2011conference](http://www.facebook.com/ASLTA2011conference)



**ASLTA**

American Sign Language Teachers Association

American Sign Language Teachers Association

Sixth Biennial National Professional Development Conference  
Renaissance Seattle Hotel  
515 Madison Street  
Seattle, WA 98104

June 29, 2011-July 3, 2011

### **Booth Exhibitor Application Form**

Exhibition booths and accessories will be set up in the Conference Center from 2:00 p.m. to 6 p.m. on Wednesday June 29, 2011. It will be open in the Madison Ballroom, Salon B and Salon C (2<sup>nd</sup> Floor) from 7:30 a.m. to 6:00 p.m. for three full days on Thursday, Friday and Saturday, June 30-July 2, 2011. The exhibits take-down will be between 5:30 p.m. to 7:30 p.m. on Saturday, July 2, 2011.

Corporations, non-profit organizations and small business are welcome to provide exhibitions at the upcoming ASLTA conference. It will be an opportunity for exhibitors to meet and do business with professionals in American Sign Language instruction and pertaining field. When your organization or business provides an exhibition, each exhibition—up to two exhibitors--will receive the following package:

- Free attendance at the Welcome Reception with an opening keynote presenter
- Professional growth by attending workshops, keynote presentations, business meeting/luncheon, Saturday breakfast, Saturday afternoon plenary session at reduced rate of \$175 combo registration fee per exhibitor
- Saturday Evening Banquet/Entertainment/Silent Auction ticket for \$100 per exhibitor
- Name of your business or organization listed in the program book and ASLTA website
- Two tote bags with souvenirs; and two program books
- Sight seeing beautiful Seattle, Puget Sound / Mt. Rainier areas
- Networking and entering partnerships with professionals, corporations, businesses and organizations



Booth Exhibit Rates are for Thursday, Friday and Saturday, June 30, 2011-July 2, 2011. The booth exhibit rate will increase by \$50.00 after April 1, 2011.

Booth Exhibit Rates until March 31, 2011			Booth Exhibit Rates after April 1, 2011		
Organizational Status	Booth w/ 6-foot table	Extra 6- foot table	Organizational	Booth w/ 6-foot table	Extra 6-foot table
Corporate	\$350.00	\$50	Corporate	\$400.00	\$50
Non-profit	\$200.00	\$50	Non-profit	\$250.00	\$50
Small business w/ 3 employees or less	\$200.00	\$50	Small business w/ 3 employees or less	\$250.00	\$50

### Booth Exhibit Order

Date: \_\_\_\_\_

Please reserve the following exhibit booth for:

Name: \_\_\_\_\_

(Please print organization/business name as it should appear in the program, and send your logo)

Address: \_\_\_\_\_

City/State/Zip Code: \_\_\_\_\_

Contact Name: \_\_\_\_\_

Position: \_\_\_\_\_

Email: \_\_\_\_\_

Voice Phone: \_\_\_\_\_ Videophone: \_\_\_\_\_



Until March 31, 2011 Corporate	After April 1, 2011 Corporate	How many <i>extra</i> 6-foot tables?	Exhibitor's Combo Registration	Exhibitor's Saturday Evening Banquet Ticket	Total amount within the application box below
_____ \$350.00	_____ \$400.00	\$50.00 x _____ tables	_____ \$175	_____ \$100	\$ _____
Non-profit	Non-profit	How many <i>extra</i> 6-foot tables?	Exhibitor's Combo Registration	Saturday Evening Banquet Ticket	Total amount within the application box below
_____ \$200.00	_____ \$250.00	\$50.00 x _____ tables	_____ \$175	_____ \$100	\$ _____
Small business with 3 employees or less	Small business with 3 employees or less	How many <i>extra</i> 6-foot tables?	Exhibitor's Combo Registration	Saturday Evening Banquet Ticket	Total amount within the application box below
_____ \$200.00	_____ \$250.00	\$50.00 x _____ tables	_____ \$175	_____ \$100	\$ _____

**ACCEPTANCE OF EXHIBITOR AGREEMENT**

It is mutually agreed by and between the 2011 American Sign Language Teachers Association, Inc. (ASLTA) and the undersigned that ASLTA shall have no liability whatsoever to an exhibitor, his/her employees or any business activities presented by the exhibitor. In addition, ASLTA shall not be liable for any loss or damage incurred or resulting from any cause to the property of the Exhibitor, his/her employees or business. Furthermore, it is understood and agreed that all claims against ASLTA for any such damage, loss or injury are expressly waived by the undersigned. The undersigned shall assume the responsibility for any damage, loss or injury as a result of providing such exhibition during the ASLTA Conference.

It is also understood and agreed that ASLTA shall in no event be liable to the undersigned for any loss of profits, sales, or business opportunities, or any other type of direct or consequential damages to be due from a breach of this contract. It is understood and agreed that the sole liability of ASLTA to the undersigned for any breach of this contract shall be for refunds of all monies paid by the Exhibitor pursuant to this contract as the exclusive remedy.



**ASLTA**

American Sign Language Teachers Association

Each exhibitor agrees to this:

I accept responsibility for my own booth at all times.

I understand that the Exhibit Committee of Seattle 2011 ASLTA Conference will make all decisions pertaining to the acceptance/rejection of exhibit applications and actual placement of exhibits.

I agree to close my booth during take-down time and remove the trash.

I understand that the booth can be manned by a maximum of four people.

### CANCELLATION POLICY

Request for exhibition cancellation must be made in writing. Refunds shall be as follows.

- Postmarked by January 31, 2011-100% refund
- Postmarked by March 15, 2011-75% refund
- Postmarked by April 30, 2011- 50% refund
- Postmarked after May 1, 2011- NO refund

Exhibitor's Signature: \_\_\_\_\_ Date: \_\_\_\_\_

(I have read, understand and agree to the policies/agreement listed above, and am including payment for the costs involved).

Printed Name: \_\_\_\_\_

Questions? Email Claudia Foy at [foyclaudia@gmail.com](mailto:foyclaudia@gmail.com).

Please make check or money order payable to Seattle 2011 ASLTA Conference and mail to:

Terry Sasser  
Seattle 2011 ASLTA Conference  
Treasurer  
P.O. Box 1572  
Edmonds, WA 98020-1572  
[terrysasser@comcast.net](mailto:terrysasser@comcast.net)

### VERY IMPORTANT INFORMATION FOR BOOTH EXHIBITORS

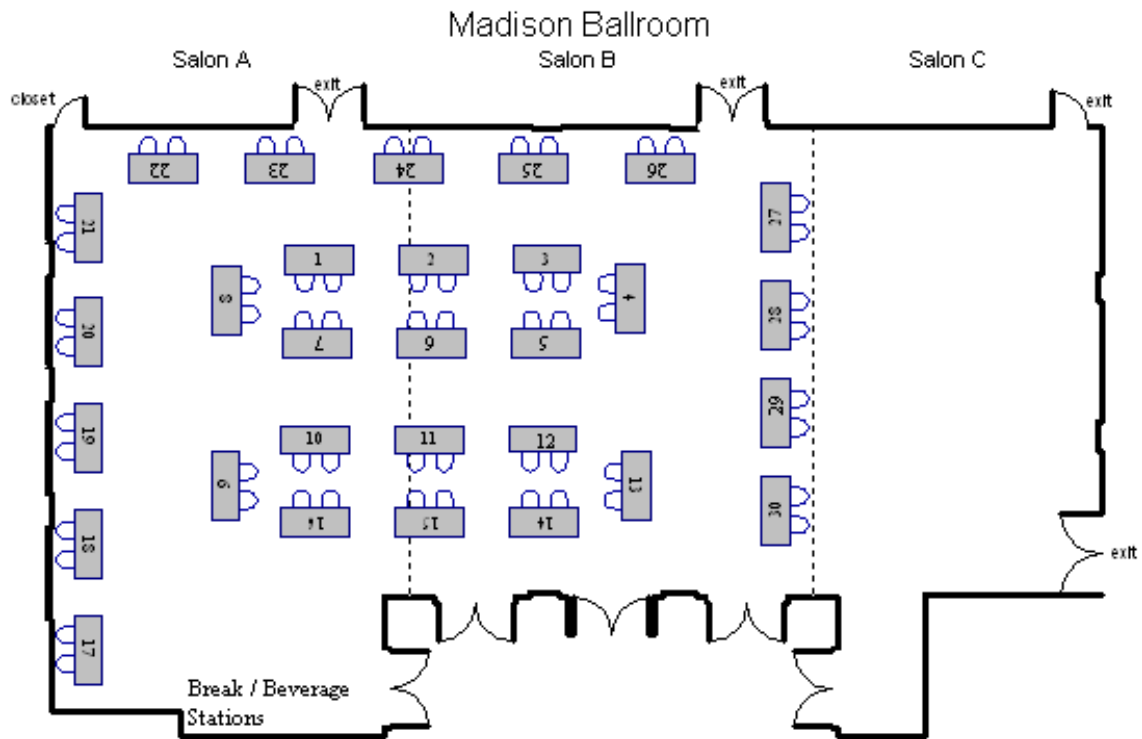
Each exhibitor should be prepared to pay our chosen audio-visuals directly for the use of electrical outlets at a fee per day. Further information will be sent out soon.

DO NOT WRITE BELOW THIS LINE

\_\_\_\_\_

Date received: \_\_\_\_\_ Date confirmation sent: \_\_\_\_\_ Email \_\_\_ Letter





(30) 6 x 30" Tables with (2) chairs each



**ASLTA**

American Sign Language Teachers Association

**American Sign Language Teachers Association  
6th National Professional Development Conference  
June 29 - July 3, 2011, Seattle, Washington**



**Proudly hosted by the WA ASLTA Chapter**

**Program Book Advertisements**

The program book will be 8 1/2 by 11 and in full color. Camera ready copy to be provided by your company no later than **May 15, 2011**. Full page \$150; Half page \$100; one fourth page \$75; business card size (3.5 x 2) \$25. Send camera ready copy to: [CathiB@VisualizeASL.com](mailto:CathiB@VisualizeASL.com)

**Promotional Literature Stuffing**

We will insert literature or premiums (pens, notepads, etc.) advertising your organization, products, and/or services into the bags each participant at the conference receives. This service is available for just \$100 for single sheet, \$200 for multiple sheets or catalog and \$150 for premiums.

**Premiums materials must be sent to the hotel and must arrive between June 25 - June 27**

Karyn Tanaka, Event Manager  
for ASLTA 2011 Conference  
Renaissance Seattle Hotel

515 Madison Street, Seattle, WA 98104

Please fill out the form below and mail with your check to:

Terry Sasser, Special Assistant, P.O. Box 1572, Edmonds, WA 98020-1572

Name of Company \_\_\_\_\_

Address \_\_\_\_\_

City \_\_\_\_\_ State \_\_\_\_\_ Zip Code \_\_\_\_\_

Contact person \_\_\_\_\_

Email address \_\_\_\_\_

<b>Ad size:</b>	<b>Full \$150</b>	<b>Half \$100</b>	<b>Quarter \$75</b>	<b>Biz Card \$25</b>	<b>\$</b>
<b>Literature:</b>	<b>Single \$100</b>	<b>Multiple \$200</b>	<b>Premium \$150</b>		<b>\$</b>
<b>Donation</b>					<b>\$</b>
<b>Check #</b>	<b>Total amount of check</b>				<b>\$</b>



# ASLTA Conference 2007 DVDs

***Missed out on some  
of the workshops?  
Get them on DVD!***

A lot happened at the ASLTA Conference and you can catch up on anything you missed with these high-quality DVDs of conference workshops and events. Share conference workshops with colleagues and students, or just review highlights at your leisure.

**Presented in  
American Sign Language**

**DVDs will be shipped in February 2008**

ASL Poetry and Story Telling	<b>1 disc</b>	\$29.95
About Teaching ASL	<b>4 discs</b>	\$99.95
Conference Proceedings	<b>24 discs</b>	\$146.95
Combo (All three DVDs)	<b>29 discs</b>	\$234.85

Name \_\_\_\_\_  
 Address \_\_\_\_\_  
 City \_\_\_\_\_  
 State \_\_\_\_\_ Zip Code \_\_\_\_\_  
 Phone \_\_\_\_\_  
 Email \_\_\_\_\_

	Quantity	Price	Total Cost
ASL Poetry/Story Telling	_____ x	\$29.95	_____
About Teaching ASL	_____ x	\$99.95	_____
Conference Proceedings	_____ x	\$146.95	_____
Combo (All three DVDs)	_____	<b>\$234.85</b>	_____
<b>Orders are non-refundable Portion of proceeds go to ASLTA</b>			<b>Total \$</b> _____

### Payment Method

check/money order  
 Visa  Mastercard  
 Discover  AMEX  
 Name of Cardholder \_\_\_\_\_  
 Credit Card # \_\_\_\_\_  
 Expiration Date \_\_\_\_\_  
 Signature \_\_\_\_\_

**Please mail  
or fax order to:**  
 CSD-TV  
 102 N. Krohn Place  
 Sioux Falls, SD 57103  
 FAX: (605) 367-5958



*For more information contact CSD-TV at 800-642-6410 (V) or 866-273-3323 (TTY)*

**CSD** (also known as Communication Service for the Deaf, Inc.) is a private, nonprofit organization dedicated to providing broad-based services, ensuring public accessibility and increasing public awareness of issues affecting deaf and hard of hearing individuals. Through global leadership and a continuum of quality communication services and human service programs, CSD provides the tools conducive to a positive and fully integrated life. Please visit us online at [www.c-s-d.org](http://www.c-s-d.org) to learn more about what we can do for you.



CSD-TV has launched two compelling new programs created by and for the deaf and hard of hearing community.



**FYE** provides investigative reports, interviews, feature segments and profiles of deaf and hard of hearing people in the news. **Spice Up** takes you into the kitchen of noted deaf chef Jeff Perri as he shares the secrets to creating exciting cuisine. Watch a new episode every week online at [www.csd.tv](http://www.csd.tv)





**ASLTA**

American Sign Language Teachers Association

**ASL / Deaf Businesses show your support.  
ASL Clubs advertise your wares!**

**Advertising Donations**

Full page = \$150

½ page = \$100

¼ page (this size) \$75

**Deadlines for Articles & Advertisements**

March 1<sup>st</sup>

June 1<sup>st</sup>

September 1<sup>st</sup>

December 1<sup>st</sup>

Looking for a way to generate new customers? Want to keep your products in front of your current clientele? Want to launch something new? Let ASLTA help you increase your sales.

Our quarterly newsletter is read by teachers of ASL from all around the nation in winter, spring, summer, and fall. Our readership consists of 300+ teachers who purchase your products and then pass your contact information on to their students who, in turn, also purchase your products. And, as we all know, word of mouth – or, in our case, sign of hand – advertising is the most effective!

Each issue of the ASLTA News consists of 12-20 pages that measure 8 ½" x 11" per page. The ASLTA News is mailed, first class, not bulk! This puts your company's name and information right in front of your customers!

Send your camera-ready copy (tiff, jpg, Word document, or Adobe .pdf) to **Betti Bonni (ASLTA Treasurer)** via email: [BBonni2@aol.com](mailto:BBonni2@aol.com). Send payments to **Betti Bonni, ASLTA Treasurer, P.O. Box 20823, St. Petersburg, FL 33742.**

**Advertisements**

<b>Donation</b>	<b>Size</b>	<b>Quarterly Deadlines</b>	<b>Annual Rates</b>
\$150	Full Page (6.5"x9")	MAR 1 – JUN 1 – SEP 1 – DEC 1	5% discount **
\$100	½ Page (vertical: 3.25"x9" or horizontal: 6.5"x4.5")	MAR 1 – JUN 1 – SEP 1 – DEC 1	5% discount **
\$75	¼ Page (3.25"x4.5")	MAR 1 – JUN 1 – SEP 1 – DEC 1	5% discount **

\* Thirty days prior to publication.

\*\* Ads will be updated if received prior to normal advertising deadlines. If not, the last quarter's ad will be re-run.



**ASLTA**

American Sign Language Teachers Association



**ASLTA**

American Sign Language Teachers Association

2011 ASLTA Membership  
PO Box 20823  
St. Petersburg, FL 33742-0823

## 2011 Membership Application

To maintain valid certification [Provisional or Qualified or Professional], dues must be paid each and every calendar year.  
*Dues cycle is based on annual calendar year. Payment is due in January.*

**PLEASE PRINT CLEARLY!**

**Member's Information:**

Last: \_\_\_\_\_ First: \_\_\_\_\_

Address: \_\_\_\_\_  
\_\_\_\_\_

Main email: (for inclusion in our website news. This email is NOT shared with 3<sup>rd</sup> parties.)  
\_\_\_\_\_@\_\_\_\_\_

Other contact info: \_\_\_\_\_

Institutional Affiliation: \_\_\_\_\_

<b>Membership Categories: (select one)</b>	
<b>Certified Membership (Voting)</b> (for those who have been awarded ASLTA certification) <b>Select your level:</b> <input type="checkbox"/> Provisional <input type="checkbox"/> Qualified <input type="checkbox"/> Professional	\$ _____ (\$50) Certification Exp. Date: _____
<b>Associate [Non-certified] Membership (Voting)</b> (Non-certified ASLTA members, Aspiring Teachers, Mentors, Promoters)	\$ _____ (\$40)
<b>Supporting Membership (Non-Voting)</b> (for general public – non-teachers – who would like to lend support to the efforts of the national organization)	\$ _____ (\$25)
<b>Institutional Membership (Non-Voting)</b> (for organizations, schools, publishers, etc.)	\$ _____ (\$150)
<b>Donation:</b>	\$ _____
For office use only: Thank you letter sent _____	
<b>TOTAL:</b>	\$ _____

For office use only:

\_\_\_\_\_ Secretary

\_\_\_\_\_ Treasurer

\_\_\_\_\_ Member Coord

Date rec'd \_\_\_\_\_

Check nbr \_\_\_\_\_

Card sent \_\_\_\_\_

**Important Privacy Notice:**  
ASLTA maintains a database of all membership information. This database is kept strictly confidential, with access only by members of the Board and the Membership Coordinator. However, when deemed appropriate by the Board, announcements or news may be sent via email to members on the list. If you wish to NOT receive any emails, initial here: \_\_\_\_\_  
ASLTA may set up a membership directory on our website. Members' names, state of residence, and certification level may be published. If you do NOT wish to have your information in the directory, initial here: \_\_\_\_\_ Lack of initials implies consent.

Be sure to visit our webpage often: [www.aslta.org](http://www.aslta.org)



**ASLTA**

American Sign Language Teachers Association

## **Proposal for ASLTA Bylaws revision 2011**

The Certification Committee Chair will be removed from the Board and become a paid position due to the importance of promoting, maintaining, and expanding the evaluation program towards ASLTA teacher certification. The appointed Certification Coordinator will continue to report directly to the Board on a regular basis. The payments will be determined by the Board of Directors.

In its place, a Member-at-Large (MAL) position is proposed. This position may represent an area not present on the Board such as a country region (i.e. Midwest, South, etc.) an educational level (i.e. K-12, L1, etc.) or other category. The MAL will be appointed by the President subject to Board approval. The MAL shall be responsible for publicity and outreach under the direction of the Board.

The Certification Coordinator will become the fourth appointed and paid position working for the ASLTA Board and members in addition to the Membership Coordinator, Newsletter Editor, , and Webmaster.

The current Certification Committee Chair will maintain a list of active evaluators, develop a handbook of policies and procedures in current practice, including any revisions from the summer 2011 systems review committee decisions.

The reason for this change is that the Evaluation and Certification system is a valuable service offered by ASLTA to ensure highly qualified ASL teachers. There is a great deal of work and attention to details to keep the system running smoothly and involves hours each month in working with the provisional, qualified, professional levels, and renewals. Thus the Coordinator should be a paid position for the work done that is beyond the usual volunteer hours by a Board member.

In addition, a section was added for committees so that they are recognized as part of the ASLTA structure.

An e-mail will be sent to all current 2011 members that will link them to the SurveyMonkey web site for a single question to vote on the bylaws proposal with a yes or no response. All members should respond by May 1, 2011.

## **BYLAWS OF THE AMERICAN SIGN LANGUAGE TEACHERS ASSOCIATION (ASLTA)**



**ASLTA**

American Sign Language Teachers Association

(Ratified by the Membership of the ASLTA on August 31, 2010)

## MISSION OF THE ASLTA

To perpetuate, preserve, and promote American Sign Language (ASL) and Deaf Culture through excellence in teaching. This includes teaching ASL as a heritage or first language, as a second language, and as part of Deaf Studies.

## ARTICLE I – NAME and LOCATION of the ASSOCIATION

### Section 1 - Name of the Association

The name of this non-profit national organization shall be known as the American Sign Language Teachers Association (ASLTA). For the remainder of the Bylaws, the ASLTA shall be called “the Association.”

### Section 2 - Location of the Association

The home office of the Association shall be maintained at a location determined by the Board of Directors of the Association. The office shall be the repository of all records, files, papers, and documents pertaining to the business of the Association.

## ARTICLE II – OBJECTIVES

1. To perpetuate, preserve, and promote American Sign Language as a heritage language.
2. To provide a closer relationship between teachers of ASL and Deaf Studies and other organizations with similar interests consistent with the mission of the Association.
3. To provide an effective avenue for the exchange of information regarding methods of teaching and materials related to the instruction of ASL and Deaf Studies.
4. To provide professional development opportunities for ASL and Deaf Studies teachers.
5. To develop and maintain certification standards for ASL teachers and academic programs offering ASL and Deaf Studies courses.
6. To provide a certification system to ensure highly qualified teachers of American Sign Language and Deaf Studies.
7. To develop standards and procedures for the accreditation of training pro-



grams, facilities and personnel involved in the education of teachers of ASL and/or Deaf Studies.

8. To develop and maintain a national directory of fellow members including certified teachers and certified ASL and/or Deaf Studies programs.
9. To encourage the development and maintenance of affiliated chapters.
10. To support the ASL Honor Society program for the benefit of secondary and postsecondary ASL students.

### ARTICLE III -- MEMBERSHIP

#### Section 1 - Categories of Membership

Membership in the Association shall be open to teachers of ASL and/or Deaf Studies and other interested individuals. There shall be five categories of membership. Members in good standing shall pay dues according to appropriate categories of membership on an annual basis.

1. Certified Member. A certified member who is a member in good standing and has received ASLTA teacher certification from the Association shall have full voting privileges in all matters of the Association.
2. Associate Member. An associate member who is a member in good standing and is not ASLTA-certified as a teacher of ASL and/or Deaf Studies shall have voting privileges in all matters of the Association except evaluation and certification.
3. Supporting Member. A supporting member in good standing who is a non-certified individual or student not teaching ASL and interested in supporting the objectives and activities of the Association but shall not have voting privileges.
4. Institutional Member. Educational institutions, agencies, corporations, and other associations which support the mission of the Association may choose to join as an institutional member. Institutional members shall not have voting privileges. One designated person shall receive the Association's newsletter and other pertinent mailings. In addition, the institutional member will be so noted in membership directories or other listings of the membership of the Association.
5. Honorary Member. Those individuals or organizations who are honorary





members recognized by the Association for their contributions to the mission of the Association shall not have voting privileges. Honorary members shall receive the Association's newsletter and pertinent mailings. Furthermore, honorary members shall receive an embossed certificate in recognition of their contributions to the Association. Since honorary membership is a lifetime designation, honorary members shall pay no annual dues.

## Section 2 - Membership Dues

Dues for the categories of membership of the Association shall be determined by a majority vote of the Board of Directors. Annual dues shall be payable in January. Members in arrears more than four (4) months after payment is due shall be dropped from membership. Those members who are certified members must pay dues annually to maintain their teacher certification.

## ARTICLE IV – MEETINGS

### Section 1 - General Business Meetings

General business meetings of the membership shall be held biennially during odd numbered years at a location and date to be determined by the Board of Directors of the Association.

### Section 2 - Quorum

For the purpose of conducting meetings, at least twenty-five (25) voting members in good standing shall constitute a quorum. For those issues involving the ASLTA Certification System, only members (at least 25 members holding ASLTA teacher certification in good standing) shall vote (please refer to Article III, Section 1 and 2).

### Section 3 - Special Meetings of the Membership

In absence of a quorum, the President or at least four (4) Board members may call a special meeting of the membership. Motions made at a special meeting shall be non-binding and referred to the Board of Directors for further action. The Board of Directors, at its discretion, may defer action on motions until the next General Meeting with a quorum, refer motions to an appropriate committee for disposition, or conduct a mail referendum vote to determine consensus of the membership for selected motions made while in a Special Meeting.



**ASLTA**

American Sign Language Teachers Association

#### Section 4 - Board of Directors Meetings

The Board of Directors shall meet at least once annually. Special meetings of the Board may be called by the President if necessary.

#### Section 5 - Parliamentarian

The President, at his/her discretion, may appoint a Parliamentarian to advise the organization on parliamentary procedures.

### ARTICLE V – BOARD of DIRECTORS

#### Section 1 - Composition of Board of Directors of the Association

The Board of Directors of the Association shall be composed of the President, Vice President, Secretary, Treasurer, ~~Certification Committee Chair~~, Chapter Affiliation Chair, and Professional Development Chair, **and Member-at-Large**, who shall be responsible for business matters of the Association between biennial general business meetings. All Board members, except the immediate Past President, shall have voting privileges. The immediate Past President shall serve as a consultant to the Board for up to two years. The President shall appoint, subject to confirmation by the Board of Directors, standing and special committees of the Association. By unanimous consent, the Board of Directors may waive confirmation procedures.

#### Section 3 - Budget

The Board of Directors, with the cooperation of the Treasurer, shall prepare a budget on an annual basis by April 15, based on the five-year strategic plan. The budget will clearly indicate projected revenue and sources (e.g., membership, grants, financial support) as well as projected expenditures including specific charges to the Association for services. No other charges, direct or indirect, may be made against the Association budget without consent of the Board of Directors.

#### SECTION 4 - Removal of Board Members or Committee Chairs

Any Board member or committee chair may be removed from office for cause with a majority vote of the Board of Directors based on a vote of no confidence or at the Board of Directors' discretion.



**ASLTA**

American Sign Language Teachers Association

## ARTICLE VI - DUTIES of OFFICERS

### Section 1 - Duties of the President

The President shall be the primary elected officer of the Association. S/he shall preside at all meetings of the Association and Board meetings. S/he shall be responsible for the oversight of all Board duties and for coordination of all Board activities but not limited to preparation of the Board meeting agendas and appointing committee chairs. S/he shall serve as the primary liaison with external organizations.

### Section 2 - Duties of the Vice-President

The Vice-President shall serve in the absence of the President. S/he shall succeed to the office of President should that office become vacant prior to the expiration of the term of office of the President. The Vice-President shall serve as Bylaws Chair. In addition, s/he shall perform all duties as assigned by the President and approved by the Board of Directors. S/he shall oversee the implementation and activities of committees assigned by the President.

### Section 3 - Duties of the Secretary

The Secretary shall keep accurate and complete minutes of all meetings of the Association and the Board of Directors. The Secretary shall maintain a roster of all members of the Association, and shall keep on file all documents, electronic data storage, communications and other papers related to the business of the Association.

### Section 4 - Duties of the Treasurer

The Treasurer shall ensure that accurate financial records are kept and maintained, and reports are made at each Board of Directors meeting, and an audit is performed annually.

### ~~Section 5 - Duties of the Certification Committee Chair~~

~~-~~

~~The Certification Committee Chair (CCC) shall manage the Evaluation and Certification System including revisions and appeals, and shall serve as liaison between the Certification Committee and the Board of Directors.~~



**ASLTA**

American Sign Language Teachers Association

#### Section 6-5- Duties of the Chapter Affiliation Chair

The Chapter Affiliation Chair (CAC) shall have charge of all affiliated chapters of the Association in the United States of America. S/he shall oversee the affiliation process and maintenance process of chapters, including submission of chapter By-laws, fulfillment of required procedures for affiliation and annual maintenance of chapters in good standing.

#### Section 7-6- Duties of the Professional Development Chair

The Professional Development Chair (PDC) shall be responsible for coordinating all aspects of professional development activities but not limited to (1) conference planning, (2) maintaining a resource listing of presenters, (3) assistance with professional development opportunities for members and (4) assistance with professional development workshop hours and Continuing Education Units (CEUs) for members of the Association.

#### Section 7 – Member-at-Large

The Member-at-Large shall perform all duties as assigned by the President and approved by the Board of Directors. S/he shall be responsible for publicity and outreach under the direction of the Board.

#### Section 8 - Compensation

Board Members shall serve without compensation except for standard expenses as approved by the Board of Directors.

### ARTICLE VII - ELECTION and APPOINTMENT of BOARD MEMBERS

#### Section 1 – Board Members to be Elected and/or Appointed

Those Board members of the Association to be elected, and who shall serve until their successors are duly elected, shall be President, Vice President, Secretary and Treasurer. Three other Board members of the Association: ~~Certification Committee Chair~~, Chapter Affiliation Chair, and Professional Development Chair **and Member-at-Large** shall be appointed by the President, subject to approval of the Board of Directors. All of them shall be members of the Board of Directors. President, Vice-President, Secretary, Treasurer, and ~~Certification Committee Chair~~, Chapter Affiliation Chair, ~~and~~ Professional Development Chair **and Member-at-Large** shall have



Professional-level certification and be members in good standing for at least two years prior to election or appointment to the Board of Directors.

### Section 2 - Nomination Process

Nominations for elected members of the Board of Directors shall be made by a Nomination Committee composed of three (3) Professional-level members in good standing selected by the Board of Directors. Recommendations for nomination of officers may be submitted to the Nomination Committee by any voting member of the organization, provided the nomination is accompanied by 1) biographical data detailing the nominee's qualifications for the office and 2) signature of the nominee. A call for nominations from the membership, stating and describing the offices open for election, shall be printed in the Association newsletter, the website and/or email. Nominations from the membership must be submitted to the Nomination Committee at least ninety (90) days prior to the biennial general business meeting.

### Section 3 - Election Procedures

There shall be alternating elections every two (2) years. Groups of officers to be elected in alternate elections are as follows:

1. The President and the Secretary (2013, 2017 and so forth)
2. The Vice President and the Treasurer (2011, 2015 and so forth)

Elections will take place by email or online ballot at least sixty (60) days prior to the start of the biennial general business meeting. All voting members in good standing shall be provided with one (1) ballot. Return of ballots will be accepted at least thirty (30) days prior to the start of the biennial general business meeting. Election results will be announced at the biennial business meeting of the Association, in the Association newsletter, and/or on the Association website. In the event that no prior nominations are offered for a position, nominations from the floor at the general business meeting will be accepted.

### Section 4 - Expiration of Terms of Office

Board Members of the Association shall continue in office until the conclusion of the biennial general business meeting of the membership.

### Section 5 - Limit on Consecutive Terms in Office

Any Board member shall serve no more than two (2) consecutive 4-year terms in



**ASLTA**

American Sign Language Teachers Association

the same position.

#### Section 6 - Resignations, Vacancies and Removal from Office

1. A Board member may resign by notifying the President of the Association in writing 30 days prior to the effective date.
2. The Board of Directors shall have the authority to fill any vacancy on the Board that may occur between biennial general business meetings of the Association with the exception of the President that shall be filled by the Vice President.
3. Board members who miss two consecutive meetings or fail to fulfill duties may be asked to resign and subject to removal with a majority vote of the Board of Directors.

### ARTICLE VIII COMMITTEES

#### Types of Committees:

There shall be two (2) types of committees: Standing; and Ad Hoc.

The chairpersons and members of all committees shall be appointed by the President, with approval by a majority of the Board of Directors, however, the President may authorize committee chairpersons to select the other members of their respective committees. Committee chairpersons must be voting members in good standing. Supporting members in good standing may serve as committee members. A committee shall consist of a minimum of three (3) members in good standing. Permanent Standing Committees: The standing committees shall include, but not be limited to, the following; Bylaws, Certification, and Membership.

Ad Hoc committees may be appointed by the President in order to address a specific organizational need. Ad Hoc committees may include, but are not limited to: Fundraising, Nominations, Legislative, and Conference.

### ARTICLE IX – CHAPTER AFFILIATION

#### Section 1 - Recognition of Affiliated Chapters

The President, with the approval of the Board of Directors, shall have the authority to officially recognize groups or organizations of ASL-Deaf Studies teachers as affiliated chapters of the Association.



**ASLTA**

American Sign Language Teachers Association

## Section 2 - Compliance with Guidelines for Affiliated Chapters

Affiliated chapters of the Association shall comply with the requirements as stipulated in the Guidelines for Chapter Affiliation and Maintenance. Chapters shall pay affiliation fees by January annually.

## Section 3 - Termination of Official Recognition of Affiliated Chapters

The President, with approval of the Board of Directors, shall have the authority to terminate the recognition of any affiliated chapter of the Association that fails to abide by the philosophy, bylaws and policies of the Association, and/or to maintain itself as an active affiliated Chapter of the Association.

### ARTICLE X – BYLAWS AMENDMENTS

The Bylaws of the Association shall be amended or revised only by mail or email ballot to all voting members in good standing with a 2/3 affirmative vote and a majority of eligible votes cast.

### ARTICLE XI – PARLIAMENTARY AUTHORITY

The rules contained in the current edition of *Robert's Rules of Order Newly Revised* shall govern the Association in all cases to which they are applicable and consistent with the Bylaws, and any special rules of order the Association may adopt.

### ARTICLE XII -- DISSOLUTION

In the event of dissolution, all of the remaining assets and property of the Association shall after payment of necessary expenses, be distributed to such organizations as shall qualify under Section 501c (3) of the Internal Revenue Code of 1986, as amended or successor provisions as the Board of Directors shall determine.

***2010 ASLTA Bylaws Revision Ratified by the ASLTA Membership on August 31, 2010***

***2003 ASLTA Bylaws Approved at the NAD/ASLTA Conference in July 2004***

©American Sign Language Teachers

American Sign Language Teachers Association  
POB 92426, Rochester NY 14692-9998