



ASLTA

American Sign Language Teachers Association

ASLTA News
Summer, Volume 2010, No. 3
Table of Contents

Articles	Page
ASLTA Feature Articles	
ASL as Living Cells ...	1
Invest in Yourself	3
Spotlight on ...	4
Officer's Reports	
President	7
Vice President	9
Secretary	
Treasurer	10
Director's Reports	
Evaluation	11
Chapter Liaison	12
Professional Development	
Committees	
JNCL	14
ASL Honor Society	16
Ever Wonder Why?	16
Bylaws Revision	18
Workshops, Notices, Ads	26
Order ASLTA DVDs	32
Deadlines Articles & Ads	33
2010 Membership Form	35

Need to mail something to ASLTA?



Check out page 8 for details!

ASL as Living Cells or Cancer?

E. Lynn Jacobowitz, Ph.D.
ASLTA Professional
Frederick, MD
&
Adonia K. Smith
ASLTA Professional
Woodbine, MD



ASL-using people are like living cells. Let's delve into basic biology for a bit. Every individual living thing is made of smaller parts that have different functions, and all of the parts work together to enable the individual to live. The smaller parts are made of even smaller parts all the way down to the living cell. Imagine, then, that each ASL user is equivalent to a single living cell. This means that each ASL user, or each cell, has to work extra hard to ensure that ASL as a whole survives. It would not be realistic to expect that each cell work alone; rather, there is strength in numbers.

Even though ASL can be seen with the human eye, people accepting the medical view often do not want to, even with glasses or microscopes, see ASL for what it really is: a bona fide language. Therefore, it is crucial that each ASL user/cell works together for different functions, each doing his or her part in upholding the truths about ASL.



How can each cell – an ASL-using individual – work together to ensure that ASL is preserved and respected? First, the cells must be seen working together. They must demonstrate that ASL has been oppressed, neglected and under-rated.

What prevents this demonstration from succeeding? Generally, cancer sets out to destroy or attack cells. What would be cancerous for ASL-using individuals?

Professionals who take the medical view of ASL's benefits often dismiss ASL's bona fide existence. So the cells must work together to protect themselves while continuing to grow and nourish the larger body – ASL. One way to flourish rather than simply survive is to have all the cells' functions complement each other. ASL users who are ASL teachers, teachers of Deaf, hard of hearing and cochlear-implanted students, specialists, curriculum designers, assessors and presenters must work together in unity. There are countless ways to accomplish this, but 15 suggestions are below.

1. Teach about Deaf role models' accomplishments, achievements and stories.
2. Focus on positive aspects of being Deaf, not hearing loss "labels" or the physiology of ears.
3. Change from categorizing children as "deaf," "hard of hearing," or "cochlear-implanted" to "ASL-using."
4. Teach *all* ASL-using children in ASL.
5. Offer ASL classes during school hours, not after school.
6. Require ASL teachers and teachers of ASL-using children to hold professional ASLTA certification, an ASL teaching license along with a teaching license, and an ASLPI score of four or higher.
7. Require full-time certified and qualified ASL interpreters *at all times* for Deaf ASL teachers, teachers of ASL-using children and other professionals working in predominantly English-speaking environments.
8. Shut down educational programs that do not include ASL; this is one form of language genocide that causes academic, cognitive and social skill delays.
9. Ensure that teachers applying guided signing, reading and writing through ASL as an instructional language are fluent in ASL.
10. Demand ASL for language arts classes in preschool and K-12 settings.
11. Demand that ASL milestone standards and rubrics be followed at appropriate levels in educational settings.
12. Never try to use English word order when presenting in ASL to any type



of audience, meeting with hearing people or at any time. Sign naturally and authentically.

- 13. Model ASL at all times.
- 14. Use academic ASL in all educational settings. Academic ASL is crucial for all ASL-using children, especially when they communicate with educators and students.
- 15. All children, deaf or hearing, must learn ASL. ASL is beneficial in numerous ways, and research consistently shows that hearing babies in hearing families who learn ASL score higher on IQ tests than hearing babies who do not learn ASL.



TeachASL

www.teachasl.org

Encourages free exchange of ideas
Maintains an [archive](#)

To Join

<http://listserv.valenciacc.edu>

Select the list you want (TeachASL)
Select "Join or Leave"

Add your name; pick your settings!
We recommend:

Subscription: Regular or Digest

Mail-Header: Listserv-style

Acknowledgements: Receive copy

Invest in Yourself!

Patricia Bruce
ASLTA Professional
Snohomish, WA



Why do we need professional development?

- * Each of you hopes to grow and accomplish your individual goals.
- * Discovering and using available resources helps you do your best, professionally.
- * Perspectives change, education changes, everything changes! Think out of the box.
- * Skills are everything!
- * Self-evaluation, peer-evaluation, and instructor assessments can boost your performance.
- * Invest in yourself! Go to workshops, courses, and presentations.
- * Become a better educator.
- * Hearing others' stories will enliven your own career.

Ask yourself:

- * What skill would I most like to improve?
- * In what specific ways have I succeeded?
- * What is my top teaching goal for the coming year?



ASLTA

American Sign Language Teachers Association

- * What can I do to make my teaching more fun for students?
- * Do I still enjoy teaching?
- * What is my proudest accomplishment?
- * What difficulties have I faced?
- * What's the most fun I've had at work?
- * What are the best things about teaching?
- * If I could go back and do one thing differently, what would it be?
- * What motivates me?



OIC Movies

Free registration

**See current events
discussed in ASL**

<http://www.oicmovies.com/>



New Feature: Spotlight on

ASLTA would like to know what you and/or your schools are doing to promote professionalism in our field.

If you've got something to share, send it in. You can email these announcements to the ASLTA News Editor at any time during the year, but issue deadlines are March 1st, June 1st, September 1st, and December 1st.

Email your article to AlysseR@aol.com anytime throughout the year. Please write "ASLTA News Spotlight" in the subject header.

The top submissions will be included in the ASLTA news.

Spotlight On ...



Seattle Central Community College By Katie Roberts

Seattle Central Community College offers the only Interpreter Training program in Western Washington, and its' impact on the Deaf community is strongly felt. In addition to the unique geo-



graphy and cultural life which makes Seattle exceptional, there is one of the largest Deaf-Blind communities in the United States.

The ITP at SCCC reflects this, as this small program has had an innovative relationship with the Deaf-Blind population since its inception. As part of the curriculum, ITP students learn Tactile ASL and are trained to work as Support Service Providers (SSP) and Deaf-Blind interpreters in addition to ASL interpreting. During the year, the students attend the Deaf-Blind Community Classes hosted by the Lighthouse for the Deaf-Blind at Seattle Central, where they serve as SSP and interpret the workshops.

In the summer, there is the very popular Seabeck Deaf-Blind retreat which provides a week of relaxation, support and fun that brings together Deaf-Blind people with a variety of backgrounds, languages and communication styles. The SCCC ITP requires their students to attend Seabeck retreat to work as volunteers.

This symbiosis between the ITP and the Deaf-Blind community has served both very well – as both are growing, striving, and participating in transformative relationships.

In addition, the close-knit, dedicated faculty and staff that work with the ITP and Deaf Studies offers a high deaf to hearing ratio. Out of approximately 13

full time and part-time employees, only two are hearing.

The hearing people who work with the program are powerful allies whom are dedicated to the program and they bring with them decades of interpreting experience and educational credentials.

The deaf faculty brings impressive qualifications with their accumulated knowledge and experience in the field of ASL, Deaf Studies, Linguistics, Theatre, Deaf-Blind advocacy and Interpreter Training.

The Dean of Health and Human Services is also an ally that maintains a close relationship with her faculty and staff.

Located close by is the Students with Disabilities office, with an Interpreter Coordinator that maintains a close relationship with the deaf faculty, staff, and students they serve. This office also houses a deaf counselor who is assigned to work with students in the ITP and DS program.

In addition, local Deaf community members participate in creating videos and other materials which both ITP and ASL students work with. Deaf community members also vigorously participate in the Deaf-Blind community, working as SSP, interpreters, and building close friendships with both students and Deaf-blind persons.

The faculty and staff have also established a solid presence online. For the past ten years or so, each teacher has



ASLTA

American Sign Language Teachers Association

had a web page with features such as streaming videos and lecture notes which is designed to be used in conjunction with class work. There is a website for the program – at www.seattlecentral.edu/asl-itp that offers students access to all the information they need.

In addition to the ASL/ITP Lab already in place, a new top of state of the art lab is being built with the latest technology using webcams in combination with an interlinked network that users may access online.

The faculty recently worked together to redesign the curriculum to update and better coordinate the ASL classes with the Deaf Studies and ITP courses.

As of this time, the program offers associate degrees in Interpreting, Deaf Interpreting and Deaf Studies. With the support of their Dean, they also hope to establish a Bachelor's program. The faculty and staff at Seattle Central deeply value their work and will continue their collaboration with the Deaf-Blind and the Deaf community they service.



**ASLTA
is your
Professional Organization**

Help ASLTA grow

Vote the bylaws!

Sign Media, Inc. is proud to announce these new products!

The Elephant Game

by Jason E. Zinza and Kim Brown Kurz



Introduce students to the game while expanding their language skills and understanding of Deaf culture through 22 different

activities focusing on classifiers, numbers, fingerspelling, storytelling, parameters, graphs, geography, science

and more. Includes an activity book plus a DVD.

\$64.95

SignMaster: A Master ASL! Vocabulary Review Game

by Beverly G. Stokem

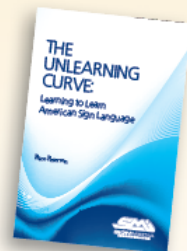
Players move through a full color game board advancing when they correctly sign vocabulary words, make sentences and show facial expressions. Challenge cards enable a player to question another player's sign production. Three to eight players.



\$49.95

The Unlearning Curve: Learning to Learn American Sign Language

by Rico Peterson



This is one of the few books to focus on helping students to learn American Sign Language. It details many of the common obstacles that students face and offers practical suggestions to improve their study of ASL.

\$24.95

To order these exciting new products, please go to our website at signmedia.com or phone 1-800-475-4756

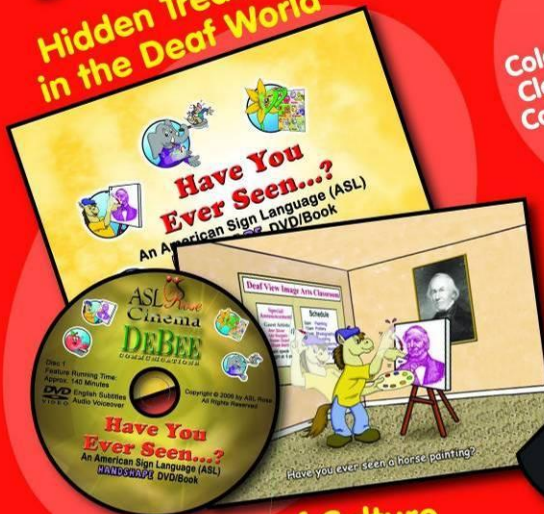


ASLTA

American Sign Language Teachers Association

Know what! ASL ROSE PRODUCTS SEE-MUST! KISS-FIST! JAW-DROP!

Hidden Treasure
in the Deaf World



**ASL & Deaf Culture
Enlightenment**

- Enjoyable for all ages
- Full color animated illustrations
- ASL-English bilingual DVD/book
- Diversity of young signers in the DVD



Powered by ASL



Be with ASL Rose!

ASL + Rose =
Double Beautiful!

To ORDER, go to our ASL Rose store at www.aslrose.com

ASL Rose
 P.O. Box 614
 Frederick, Maryland 21705-0614
 Video Phone: (240) 575-2130
 Toll Free Voice Message: (866) 680-6398
 Fax: (866) 311-8313



View ASL. Read English.
Be Bilingual-Bicultural!



ASLTA

American Sign Language Teachers Association



HOW TO CONTACT ASLTA BY MAIL

Did you know that ASLTA now has three (3) different mailing addresses to ensure that we can respond to your needs quickly and efficiently?

#1. Please use the **Florida PO Box address** for membership dues, donations, checks, or bills from now on, effective on March 10, 2010:

**ASLTA Treasurer
PO Box 20823
St. Petersburg, FL 33742**

#2. Please use the **Rochester PO Box address** for letters for any information, inquiries, and requests, effective on March 10, 2010.

**ASLTA Correspondence
PO Box 92445
Rochester, NY 14692-9998**

#3. Please use the **North Carolina address** for all evaluations and certifications as usual.

**ASLTA Certification
PO Box 39
Newell, NC 28126**

ASLTA PRESIDENT'S MESSAGE



**Larry Forestal, Ph.D.
ASLTA Professional
Surprise, AZ**

In this issue of our newsletter you will see the proposed revision of ASLTA Bylaws. The last time our Bylaws ratification occurred was 2003. Without a doubt it is long overdue. I would like for you as fellow members of the ASLTA to review the revision proposal thoroughly. Furthermore, I urge you to vote in favor of the Bylaws revision proposal.

In reference to the 5th National Professional Development Conference at the Arizona Biltmore on October 28-November 1, 2009, I would like to share information with you. A total of 401 people were registered. There were three pre-conference workshops, three keynote speakers, 45 workshops, 24 exhibitors, 13 conference sponsors. The ASLTA conference committee made a net profit of approximately \$17,000 dollars. Bundles of thanks go to the following people: Chair Geraldine Francini, Vice-Chair Judie Cronlund, Secretary Larry Forestal, Treasurer Judy Mohan, Assistant Treasurer Bob Herbold, Program Book Editor Barbara Bass, Menu Planners Pat Herbold and Penny Herbold, Driver Dave Herbold, Vest Designer Gundy Voreck, and 25 delightful volunteers.



ASLTA

American Sign Language Teachers Association

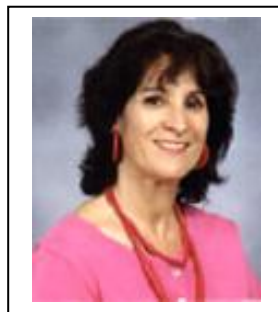
The ASLTA Board will have an annual Board meeting in conjunction with the biennial conference of the Conference of Interpreter Trainers in San Antonio, Texas on October 28-30, 2010.

On behalf of the ASLTA I wish all of you a very enjoyable and restful summer!



VICE PRESIDENT'S REPORT

**Glenna Ashton, M.Ed.
ASLTA Professional
Valdosta, GA
Boca Raton, FL**



This summer will see a wrapping up of a few projects. The again-revised bylaws are in this issue, on the web site, and in snail mail for your review and discussion. Voting deadline is at least 60 days from the publication of this newsletter which puts it at August 31. A ballot card will be enclosed for return for 2010 members. Please make sure you are current in your yearly membership dues.

The 501c3 application to IRS is being readied for mailing pending the final figures to be inputted. It has been a long process as the books had to be revised and updated, QuickBooks was purchased which required a learning curve, and CPAs were consulted.

The ASL Standards committee will have another meeting in late summer or early fall to finalize the draft for submission. We have been waiting on many reviewers to provide us with feedback for improvements and clarifications.

Existing committees will be looked at to streamline or revise and we will be looking for members to fill them this fall so please help your profession by volunteering.

Patricia Beech and I represented ASLTA at the annual JNCL-NCLIS May meeting in Washington, DC. The effect of the economy was obvious with the reduced attendance of organization members and the struggle for continued monies and recognition from the Congress to support the foreign languages programs all over. This year was different as I visited Georgia representatives instead of Florida representatives and their attitudes toward foreign languages and ASL were different since it is a less diverse state.

(See picture on the next page)

Enjoy your summer with whatever you are doing – going to workshops or conferences, teaching or preparing for your classes, preparing the ASLTA certification materials to send in, taking vacations, and/or just relaxing!



ASLTA

American Sign Language Teachers Association



House Representative Jack Kingston of District 1, Georgia, Glenna Ashton, ASLTA VP, and Meg, a staffer



ASLTA Secretary



Dorothy M. Wilkins
ASLTA Professional
Rochester, NY

No report at this time.



ASLTA Treasurer



Betti Bonni, MA
ASLTA Professional
Pinellas Park, FL

Greetings! Below you will find our balance sheet for the last fiscal year. I believe we are in good shape.

As of this publishing, we are awaiting a final accounting of the Phoenix 5th National Professional Development Conference. Unofficially, we are in the black. Kudos to the Phoenix team led by Gerry Francini for a well-run conference, and to Judy Mohan for handling the books! I am looking forward to working with a new team for the Seattle conference, led by Barbara Hayes.

Also as of this publishing, final accounting figures for 2007, 2008, 2009, and 2010 are now being inserted into our 501c3 application. This has been a long process, and time consuming detailed work. We are positive this application is as polished as it can be.

A note about Membership dues: remember that our membership cycle runs from January to December (calendar year). I've received numerous notes from people saying they did not get notification/reminders about dues. The Board is striving to improve and streamline the membership process. I believe some members may be confusing their certification expiration date with their membership renewal due date. These are 2 separate processes. Your certification date is the time your evaluation was completed and you are awarded a certificate. The membership still needs to be renewed every year, beginning in January.



ANNOUNCEMENT

I would like to announce that we have a new Membership Coordinator. Our thanks and farewell to Amy Kurz who has done a great job keeping our files since 2007. LaNae Phillips will take over the duties effective June 1st. I trust that LaNae will do a superb job also!



ASLTA's Financial Report

May 31, 10

ASSETS

Current Assets

Checking/Savings

Bank of America Checking	57,177.95
Bank of America NA Interest	9,071.06
Bank of America NPDC09	17,097.32
BK of America Honor Society	14,113.41
First National Bank	-279.71

Total Checking/Savings 97,180.03

Total Current Assets 97,180.03

Other Assets

Charles Schwab

Total Charles Schwab 55,005.95

Total Other Assets 55,005.95

TOTAL ASSETS 152,185.98

LIABILITIES & EQUITY

Equity

Opening Bal Equity

US Treasury Note 11/06 9,939.32

US Treasury Note 8/06 9,896.58

Opening Bal Equity - Other 77,007.60

Total Opening Bal Equity 96,843.50

Opening Balance Equity 10,037.78

Retained Earnings 82,237.57

Net Income -18,772.90

Total Equity 170,345.95

TOTAL LIABILITIES & EQUITY

170,345.95



ASLTA Evaluation Chair

Keith M Cagle, Ph.D.
ASLTA Professional
Newell, NC



Thanks for congratulation on my Ph.D. achievement. My dissertation title was "Exploring the Ancestral Roots of American Sign Language: Lexical Borrowing from Cistercian Sign Language and French Sign Language."

The Cistercian sign language (CSL) has been used by the monks for centuries since Middle Age. I researched on the CSL's Authorized List whose recording



ASLTA

American Sign Language Teachers Association

began as far as back 1068 A.D. and St. Joseph's Abbey List which was brought to Massachusetts before the French revolution. And I compared them with the Old French Sign Language (LSF) in 1855, 1856 and 1865, and with our current ASL. Some strong resemblances between CSL and LSF were found such as the lexical signs of AFTER, FEVER, POOR and UGLY.

Some moderate resemblances were found in several signs: BLACK, FLOWER, HEAT, LOW, MEAT, MILK, PRAY, TOMORROW and WORK.

Some strong resemblances among CSL, LSF and ASL were found such in several signs: HARD, RED, SAME, THANK and WHAT. If those CSL signs are truly preserved that long since 1068 A.D., we might say that it is possible for some of our ASL and LSF lexical signs are much older than we thought.

I have a couple of things to discuss in related to evaluation. First, we have a list of many certified members who haven't kept their membership with ASLTA in a good standing. It is crucial that the certified members keep their membership in a good standing to keep their certification valid. The evaluation office will send a new valid stamp to the certified members as soon as the office received the updated membership list from the ASLTA Treasurer's office.

Secondly, several candidates have asked me about when would be our next professional interviews. We will have the

interviews at our next ASLTA conference in Seattle, Washington during June 28th – July 3rd. The deadline for application is Feb 28, 2011. It is because we need to know the number of candidates several months in advance in order to retain a certain number of evaluators. You who are ready and eligible for professional level evaluation may go to our ASLTA website to download and print the professional level evaluation application packet. If you have any question, please feel free to contact me at asltaevaluation2003@yahoo.com

Have a great summer season.



Chapter Liaison

Colleen Evenstad
ASLTA Professional
Rochester, NY



Starting May 1st, Colleen Evenstad from Rochester, NY is the new Chapter Liaison. All chapters should continue to send updates, news, etc. to chapter@aslta.org. Please check your chapter information on the www.aslta.org website. If there are any changes to the web page, please inform webmaster@aslta.org.

On February 13, an e-mail message was sent to all Chapter POCs regarding



ASLTA

American Sign Language Teachers Association

the 2010 Annual Chapter Dues. Thanks to those that have already submitted the dues with updated officer info. If you haven't sent dues for 2010, please do so ASAP.

Below are reports from three chapters.

Thanks,
Patricia Beech, Outgoing Chapter Liaison

Florida ASLTA

The Board has been working on revising our bylaws to be in sync with those of National ASLTA.

We're busy planning our 22nd Conference and have moved the date to the last weekend in February to avoid conflicts with the Daytona 500.

FASLTA will be conducting a Membership Needs Assessment survey in March and asks that all FASLTA and Florida ASLTA members please take this short questionnaire (approximately 10 minutes to complete) as it will help us improve FASLTA's ability to meet member needs.



North Carolina ASLTA

NCASLTA will host a conference in Hendersonville, NC during November 4-7, 2010. See flyer.



Veditz ASLTA (Northern Virginia)

VASLTA hosted its annual general meeting on June 7, 2010. The presenter was Jason Zinza, and the topic was "The Numbers Have It: ASL Acceptance Policies in Unites States Colleges."



Professional Development Chair

**Arkady Belozovsky
ASLTA Professional
Framingham, MA**



No report at this time.



**ASL
Honor Society**

Scholarships for Students

**Scholarships for Teachers
Fun for One & All**

www.aslhonorsociety.org/



ASLTA

American Sign Language Teachers Association

in DVD Searchable by title, duration, and subject.

Is your use of classifiers in ASL articulate? If you are interested in enhancing your skills, this DVD is for you!

Pursuit of ASL: Interesting Facts Using Classifiers*

with Angela Petrone Straty, M.Ed. DVD ISBN 8/907714.7 VHS ISBN 8/907714.1

\$32.95 DVD, \$29.95 VHS

Classifiers are challenging to execute well regardless of one's experience. Angela Petrone Straty, an eloquent native signer, presents 35 short passages incorporating classifiers within context.

Will appeal to a variety of individuals.

- Instructors of ASL and Interpreting
- ASL students (intermediate & advanced)
- Interpreters and Interpreting students
- Professionals who use ASL in their work
- Parents of deaf and hard of hearing children
- Literacy students studying ASL-English

Presents 35 passages chosen to illustrate a wide variety of classifier use. Topics include:

- Why do we get dizzy?
- How do bruises form?
- How does the magician saw the woman in half?
- How was Velcro invented?
- How do light bulbs work?
- How do keys open locks?
- How do octopi protect themselves?
- How to hang pictures evenly.

Useful books for practitioners, interpreting students, and educators

Interpretation Skills ASL to English	Interpretation Skills English to ASL
\$27.95	\$19.95

by Marty M. Taylor, Ph.D.

Interpretation is a very complex task. The criteria for competence in the interpretation field have often been vague. Although interpreters want to enhance their skills, this is difficult to achieve unless criteria are clearly defined. These books outline and describe the necessary criteria in a readable fashion. They provide important research-based insight into the key elements of skillful interpretation. In each book, over 40 skills are identified and explained. Helpful analysis of common interpretation errors associated with each skill is provided. The skills are sequenced from those required during parts of an interpretation (knowledge lean skills) to those required during the entire interpretation (knowledge rich skills). The texts are informative, useful and educational!

- Analysis of over 40 skills in each book
- Plentiful examples
- Comprehensive subject index
- A logical path of skill development
- Essential reference texts for your collection

To order, visit our website at: aslinterpreting.com
or call 780.488.8698.

INTERPRETING CONSOLIDATED

We accept check, money order, Visa or Mastercard

Annual JNCL-NCLIS Meeting

Pat Beech
ASLTA Professional
Springfield, VA



Patricia Beech

I attended the JNCL-NCLIS three-day meeting with Glenna Ashton. It was my first-time. The first day started with a welcome greeting from Dan Davidson, president of JNCL-NCLIS, and an overview from David Edwards, executive director of JNCL-NCLIS. Next was Rep. Rush Holt (D-NJ) who talked about H.R. 4065, which is to amend the Elementary and Secondary Education Act of 1965 to establish a partnership program in foreign languages.

That afternoon we did congressional visits. My first two visits were with offices of Senator Mark Warner (Leah Ralph, Senior Legislative Correspondent) and Senator Jim Webb (Maribel E. Ramos, Legislative Assistant). The last visit was with office of Representative Gerald Connolly (Matthew Graham, Legislative Assistant). We were to stress three key points asking for support from those offices:

1. Foreign Language Education Partnership Program Act



ASLTA

American Sign Language Teachers Association

2. Funding increases for foreign language education such as the FLAP (Foreign Language Assistance Program)
3. Maintain dedicated funding for Foreign Language Education

It was an interesting experience. I encourage you all, especially those with Professional certificates, to attend future JNCL-NCLIS meetings.

For more info about JNCL-NCLIS, see: <http://www.languagepolicy.org/>.



Rep. Rush Holt (D-NJ)



Office of Senator Mark Warner
Thomas Sones (Foreign Language Association of VA), Betty Facer (Old Dominion University), Leah Ralph (Senior

Legislative Correspondent), Pat Beech (ASLTA), and Janet Ikeda (Washington and Lee University)



Office of Senator Jim Webb
Janet Ikeda (Washington and Lee University), Thomas Sones (Foreign Language Association of VA), Maribel E. Ramos (Legislative Assistant), Betty Facer (Old Dominion University), and Pat Beech (ASLTA)



Office of Rep. Gerald Connolly
Pat Beech (ASLTA) with Matthew Graham (Legislative Assistant)



ASLTA

American Sign Language Teachers Association



Pat Beech (ASLTA), David Edwards (Executive Director of JNCL-NCLIS), and Glenna Ashton (ASLTA)



American Sign Language Honor Society



ASL Honor Society Jason E. Zinza, MA National Coordinator

Now in its 4th year, ASLTA's ASL Honor Society program has continued dramatic growth. With more than 100 chapters at schools for the Deaf, high schools, community colleges, and universities around the nation, the question is: "Why haven't you brought ASLHS to your campus?"

Some of you may wonder what ASLHS does and its purpose. ASLHS encourages ASL students to pursue advanced classes and to do well, because the

longer they study and the better grades they earn, students can receive honor cords and medals to wear at graduation. They are a great incentive for students to take ASL more seriously.

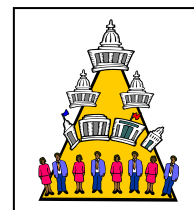
Also, ASLHS offers grants for ASL teachers to help pay for guest speakers and materials. But best of all, ASLHS offers the only nation-wide scholarships for ASL students. Now, students can see added value in pursuing ASL studies. This year \$1,000.00 scholarships were awarded, and that amount will go up for 2011.

Along with medals and cords, ASLHS sponsors an annual ASL literature competition with cash prizes. I challenge you: If you think your students can do better, prove it by encouraging them to participate!

Establishing the ASLHS on your campus is no different than having an ASL club. No extra time is required, but the benefits are worth it. For more information visit the ASLHS website at <http://www.aslhonorsociety.org>.



Ever Wonder Why? ...



The ASLTA News Editor asked "What organizational memberships are held by ASLTA and why?"



Vice President Glenna Ashton responded:

The ASLTA Board and members have gone to conferences and meetings, and responded to e-mails and inquiries as an active member of other organizations.

We pay annual dues to be organizational members of NAD, JNCL-NCLIS, and ACTFL.

We represent the members who have expertise in the teaching of Deaf Studies and ASL as a heritage, first, or second language.

NAD – National Association of the Deaf – we send one or two delegates to the biennial Council of Representatives held during the NAD Conference. This summer, President Larry Forestal will represent ASLTA. We have proposed motions related to ASL and/or ASL teachers and provided members for certain NAD committees. We used to be a section of NAD until 2003 and had separate tracks of workshops at the NAD conferences until we started our own National Professional Development Conferences. www.nad.org

JNCL-NCLIS – Joint National Committee for Languages – National Council for Languages and International Studies – we send one delegate and sometimes one member to the Delegate Assembly held every year May in Washington, DC. JNCL-NCLIS's mission is that member organizations are united in their belief that all Americans

must have the opportunity to learn and use English and at least one other language. There are over 65 organizational members that advocate for language study. In DC, we meet with the Congress Senators and House Representatives and/or their staff to promote support and recognition of foreign languages as part of education priorities at all levels. Then we have the meetings where several government agencies send people to talk to us about foreign language bills, laws, policies, and programs. Often we make connections to other organizations that are supportive of ASL there. See reports and pictures by Pat Beech elsewhere in this newsletter. www.languagepolicy.org

ACTFL – American Council on the Teaching of Foreign Languages - they provide leadership and support on the teaching and learning of languages and have a huge conference every year in different parts of the country. We have occasionally sent a representative to the conference as a participant. They are known as the publisher of the foreign language standards book that we are writing the ASL standards to be included in the next edition. www.actfl.org

SCB – Standards Collaboration Board – several large foreign language organizations run this board jointly that supervises the development of standards for individual languages. We are working with them in developing the standards for ASL that they must approve for publication. They often meet during JNCL-NCLIS and ACTFL confe-



ASLTA

American Sign Language Teachers Association

rences and we either send or present our progress report.

MLA – Modern Language Association

– we are not members yet as we do not meet several criteria such as an active peer-reviewed journal – however they are important in that they include ASL in their surveys of higher education enrollment where we have shown impressive gains in the study of ASL in the past fifteen years. A problem area for them is the difficulty of a census of native ASL signers to put on their maps. www.mla.org

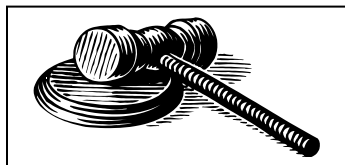
BYLAWS REVISION

In order to obtain our 501-c-3, ASLTA needed to rewrite our bylaws to reflect a) legal language required by the IRS and b) our dedication to public good.

Based on input from the bylaws committee and other interested members, the ASLTA Bylaws Committee has developed this latest revision. Please review it carefully. (The original 2003 bylaws are online at www.aslta.org).

You should have received a ballot mid June. Your response is needed by 31-AUG-2010.

If you did not, please contact ASLTA immediately.



BYLAWS OF THE AMERICAN SIGN LANGUAGE TEACHERS ASSOCIATION (ASLTA) (Proposed Bylaws Revision as of June 1, 2010)

To the Membership: This is a proposed revision of the Bylaws of the ASLTA. The membership has the opportunity to review and discuss this Bylaws revision proposal until August 31, 2010. Each ASLTA member of good standing will receive a mail or email ballot to vote on this Bylaws revision proposal during the week of June 21-26, 2010.

Notes: (1) Bolded, underlined words or sentences stand for new additions to the Bylaws of the ASLTA, and (2) Strikethrough words or sentences mean removal from the current Bylaws of the ASLTA (approved in 2003).

MISSION OF THE ASLTA

To perpetuate, preserve, and promote American Sign Language (ASL) and Deaf Culture through excellence in teaching. This includes teaching ASL as a heritage or first language, as a second language, and as part of Deaf Studies.



ARTICLE I – NAME and LOCATION of the ASSOCIATION

Section 1 - Name of the Association

The name of this non-profit national organization shall be known as the American Sign Language Teachers Association (ASLTA). **For the remainder of the Bylaws, the ASLTA shall be called “the Association.”**

Section 2 - Location of the Association

The home office of the Association shall be maintained at a location determined by the Board of Directors of the Association. ~~The President, with approval of the Board of Directors, shall designate an individual to function as an office administrator to carry out functions and responsibilities for the Association.~~ The office shall be the repository of all records, files, papers, and documents pertaining to the business of the Association.

ARTICLE II – OBJECTIVES

1. **To perpetuate, preserve, and promote American Sign Language as a heritage language.**
2. To provide a closer relationship between teachers of ASL and Deaf Studies and other organizations with similar interests consistent with the mission of the Association.
3. To provide an effective avenue for the exchange of information regarding methods of teaching and materials related to the in-

struction of ASL and Deaf Studies.

4. To provide professional development opportunities for ASL and Deaf Studies teachers.
5. To develop and maintain certification standards for ASL teachers and academic programs offering ASL and Deaf Studies courses.
6. To **provide a certification system to ensure highly qualified** ~~certify~~ **teachers of** ~~and programs offering~~ **American Sign Language and Deaf Studies.** ~~courses~~
7. To develop standards and procedures for the accreditation of training programs, facilities and personnel involved in the education of teachers of ASL and/or Deaf Studies.
8. To develop and maintain a national directory of fellow members **including** certified teachers and certified ASL and/or Deaf Studies programs.
9. To encourage the development and maintenance of affiliated chapters.
10. **To support the ASL Honor Society program for the benefit of secondary and postsecondary ASL students.**

ARTICLE III -- MEMBERSHIP

Section 1 - Categories of Membership

Membership in the Association shall be open to teachers of ASL and/or Deaf



Studies and other interested individuals. There shall be five categories of membership. Members in good standing shall pay dues according to appropriate categories of membership on an annual basis.

1. Certified Member. A certified member who is a member in good standing and has received ASLTA teacher certification from the Association shall have full voting privileges in all matters of the Association.
2. Associate Member. An associate member who is a member in good standing and is not **ASLTA**-certified as a teacher of ASL and/or Deaf Studies shall have voting privileges in all matters of the Association except evaluation and certification.
3. Supporting Member. A supporting member in good standing who is a non-certified individual or student **not teaching ASL and** interested in supporting the objectives and activities of the Association **but** shall not have voting privileges.
4. Institutional Member. Educational institutions, agencies, corporations, and other associations which support the mission of the Association may choose to join as an institutional member. Institutional members shall not have voting privileges. One designated person shall receive the Associa-

tion's newsletter and other pertinent mailings. In addition, the institutional member will be so noted in membership directories or other listings of the membership of the Association.

5. Honorary Member. Those individuals or organizations who are honorary members recognized by the Association for their contributions to the mission of the Association shall not have voting privileges. Honorary members shall receive the Association's newsletter and pertinent mailings. Furthermore, honorary members shall receive an embossed certificate in recognition of their contributions to the Association. Since honorary membership is a lifetime designation, honorary members shall pay no annual dues.

Section 2 - Membership Dues

Dues for the categories of membership of the Association shall be determined by a majority vote of the Board of Directors. Annual dues shall be payable in January. Members **in arrears more than** four (4) **months after payment is due** shall be dropped from membership. Those members who are certified members must pay dues annually to maintain their teacher certification.

ARTICLE IV – MEETINGS

Section 1 - General **Business** Meetings



General **business** meetings of the membership shall be held biennially during odd numbered years at a location and date to be determined by the Board of Directors of the Association.

Section 2 - Quorum

For the purpose of conducting meetings, at least twenty-five (25) voting members in good standing shall constitute a quorum. For those issues involving the ASLTA Certification System, only members (at least 25 members holding ASLTA teacher certification in good standing) shall vote (please refer to Article III, Section 1 and 2).

Section 3 - Special Meetings of the Membership

In absence of a quorum, the President or at least four (4) Board members may call a special meeting of the membership. Motions made at a special meeting shall be non-binding and referred to the Board of Directors for further action. The Board of Directors, at its discretion, may defer action on motions until the next General Meeting with a quorum, refer motions to an appropriate committee for disposition, or conduct a mail referendum vote to determine consensus of the membership for selected motions made while in a Special Meeting.

Section 4 - Board of Directors Meetings

The Board of Directors shall meet at least once annually. Special meetings of

the Board may be called by the President if necessary.

Section 5 - Parliamentarian

The President, at his/her discretion, may appoint a Parliamentarian to advise the organization on parliamentary procedures.

ARTICLE V – BOARD of DIRECTORS

Section 1 - Composition of Board of Directors of the Association

The Board of Directors of the Association shall be composed of the President, Vice President, Secretary, Treasurer, **Certification Committee Chair, Chapter Affiliation Chair**, and Professional Development Chair who shall be responsible for business matters of the Association between biennial general business meetings. All Board members, except the immediate Past President, shall have voting privileges. **The immediate Past President shall serve as a consultant to the Board for up to two years.** The President shall appoint, subject to confirmation by the Board of Directors, **standing and special committees of the Association.** By unanimous consent, the Board of Directors may waive confirmation procedures.

Section 3 - Budget

The Board of Directors, with the cooperation of the Treasurer, shall prepare a



budget on an annual basis by April 15, based on the five-year strategic plan. The budget will clearly indicate projected revenue and sources (e.g., membership, grants, financial support) as well as projected expenditures including specific charges to the Association for services. No other charges, direct or indirect, may be made against the Association budget without consent of the Board of Directors.

SECTION 4 - Removal of Board Members or Committee Chairs

Any Board member or committee chair may be removed from office **for cause** with a majority vote of the Board of Directors based on a vote of no confidence or at the Board of Directors' discretion.

ARTICLE VI - DUTIES of OFFICERS

Section 1 - Duties of the President

The President shall be the primary elected officer of the Association. S/he shall preside at all meetings of the Association and Board meetings. S/he shall be responsible for the oversight of all Board duties and for coordination of all Board activities but not limited to preparation of the Board meeting agendas and appointing committee chairs. S/he shall serve as the primary liaison with external organizations.

Section 2 - Duties of the Vice-President

The Vice-President shall serve in the absence of the President. S/he shall succeed to the office of President should that office became vacant prior to the expiration of the term of office of the President. **The Vice-President shall serve as Bylaws Chair.** In addition, s/he shall perform all duties as assigned by the President and approved by the Board of Directors. S/he shall oversee the implementation and activities of committees assigned by the President.

Section 3 - Duties of the Secretary

The Secretary shall keep accurate and complete minutes of all meetings of the Association and the Board of Directors. The Secretary shall maintain a roster of all members of the Association, and shall keep on file all documents, **electronic data storage**, communications and other papers related to the business of the Association.

Section 4 - Duties of the Treasurer

The Treasurer shall ensure that accurate financial records are kept and maintained, and reports are made at each Board of Directors meeting, and an audit is performed annually.

Section 5 - Duties of the **Certification Committee Chair**

The Certification Committee Chair (CCC) shall manage the **Evaluation**



and Certification System including revisions and appeals, and shall serve as liaison between the Certification Committee and the Board of Directors.

Section 6 – Duties of the **Chapter Affiliation Chair**

The Chapter Affiliation Chair (CAC) shall have charge of all affiliated chapters of the Association in the United States of America. S/he shall oversee the affiliation process and maintenance process of chapters, including submission of chapter Bylaws, fulfillment of required procedures for affiliation and annual maintenance of chapters in good standing.

Section 7 – Duties of the Professional Development Chair

The Professional Development Chair (PDC) shall be responsible for coordinating all aspects of professional development activities but not limited to (1) conference planning, (2) maintaining a resource listing of presenters, (3) assistance with professional development opportunities for members and (4) **assistance with professional development workshop hours and Continuing Education Units (CEUs) for members of the Association.**

Section 8 - Compensation

Board Members shall serve without compensation except for standard expenses as approved by the Board of Directors.

ARTICLE VII - ELECTION and APPOINTMENT of BOARD MEMBERS

Section 1 – **Board Members to be Elected and/or Appointed**

Those Board members of the Association to be elected, and who shall serve until their successors are duly elected, shall be President, Vice President, Secretary and Treasurer. Three other Board members of the Association: Certification Committee Chair, Chapter Affiliation Chair, and Professional Development Chair shall be appointed by the President, subject to approval of the Board of Directors. All of them shall be members of the Board of Directors. President, Vice-President, Secretary, Treasurer, and Certification Committee Chair shall have Professional-level certification and be members in good standing for at least two years prior to election or appointment to the Board of Directors. **Chapter Affiliation Chair and Professional Development Chair shall have Professional-level certification and be members in good standing for at least two years prior to election or appointment to the Board of Directors.**

Section 2 - Nomination Process

Nominations for elected members of the Board of Directors shall be made by a Nomination Committee composed of **three (3) Professional-level members in good standing selected by the Board of Directors.** Recommendations for nomination of officers may be sub-



mitted to the Nomination Committee by any voting member of the organization, provided the nomination is accompanied by 1) biographical data detailing the nominee's qualifications for the office and 2) signature of the nominee. A call for nominations from the membership, stating and describing the offices open for election, shall be printed in the **Association newsletter, the website and/or email.** Nominations from the membership must be submitted to the Nomination Committee **at least ninety (90) days prior to the biennial general business meeting.**

Section 3 - Election Procedures

There shall be alternating elections every two (2) years. Groups of officers to be elected in alternate elections are as follows:

1. The President and the Secretary (2013, 2017 and so forth)
2. The Vice President and the Treasurer (2011, 2015 and so forth)

Elections will take place by **email or on-line** ballot **at least sixty (60) days** prior to the start of the biennial **general business** meeting. All voting members in good standing shall be provided with one (1) ballot. Return of ballots will be accepted **at least thirty (30) days** prior to the start of the **biennial general business meeting.** **Election results will be announced at the biennial business meeting of the Association.**

in the Association newsletter, and/or on the Association website. In the event that no prior nominations are offered for a position, nominations from the floor at the general business meeting will be accepted.

Section 4 - Expiration of Terms of Office

Board Members of the Association shall continue in office until the conclusion of the biennial general business meeting of the membership.

Section 5 - Limit on Consecutive Terms in Office

Any Board member **shall serve no more than two (2) consecutive 4-year terms** in the same position.

Section 6 - Resignations, Vacancies and Removal from Office

1. A Board member may resign by notifying the President of the Association in writing 30 days prior to the effective date.
2. The Board of Directors shall have the authority to fill any vacancy on the Board that may occur between biennial general business meetings of the Association with the exception of the President that shall be filled by the Vice President.
3. Board members who miss two consecutive meetings or fail to fulfill duties may be asked to re-



sign and subject to removal with a majority vote of the Board of Directors.

ARTICLE VIII – CHAPTER AFFILIATION

Section 1 - Recognition of **Affiliated Chapters**

The President, with the approval of the Board of Directors, shall have the authority to officially **recognize groups or organizations of ASL-Deaf Studies teachers as affiliated chapters of the Association.**

Section 2 - Compliance with Guidelines for Affiliated Chapters

Affiliated chapters of the Association shall comply with the requirements as stipulated in the Guidelines for Chapter Affiliation and Maintenance. **Chapters shall pay affiliation fees by January annually.**

Section 3 - Termination of Official Recognition of **Affiliated Chapters**

The President, with approval of the Board of Directors, shall have the authority to terminate the recognition of any **affiliated** chapter of the Association that fails to abide by the philosophy, by-laws and policies of the Association, and/or to maintain itself as an active affiliated Chapter of the Association.

ARTICLE IX – BYLAWS AMENDMENTS

The Bylaws of the Association shall be **amended or revised** only by mail **or email** ballot to all voting members in good standing with a 2/3 affirmative vote and a majority of eligible votes cast.

ARTICLE X – PARLIAMENTARY AUTHORITY

The rules contained in the current edition of *Robert's Rules of Order Newly Revised* shall govern the Association in all cases to which they are applicable and consistent with the Bylaws, and any special rules of order the Association may adopt.

ARTICLE XI -- DISSOLUTION

~~In case of dissolution, all monies and records shall be given to a non-profit organization chosen by the membership of the Association.~~ **In the event of dissolution, all of the remaining assets and property of the Association shall after payment of necessary expenses, be distributed to such organizations as shall qualify under Section 501c(3) of the Internal Revenue Code of 1986, as amended or successor provisions as the Board of Directors shall determine.**

Approved 2003 ASLTA Bylaws at the NAD/ASLTA Conference in July 2004
Unofficial First Revision 4/12/05
Unofficial Second Revision 12/31/07



ASLTA

American Sign Language Teachers Association

Unofficial Third Revision 8/25/2009

Fourth Revision 6/1/2010

BYLAWS

Look for your ballot!

Vote!

**Help ASLTA earn its
501c3!**

Help ASLTA help you!

BYLAWS

ASLTA News

Is actively seeking

- Articles**
- Announcements**
- Chapter Notices**
- Research**
- Spotlights on ...**
 - Teachers**
 - Schools**
 - Teachers**

Send you material to our Newsletter Editor, AlysseR@aol.com using the subject header ASLTA News Submission.

Send advertising donations to our ASLTA Treasurer, BBonni2@aol.com.

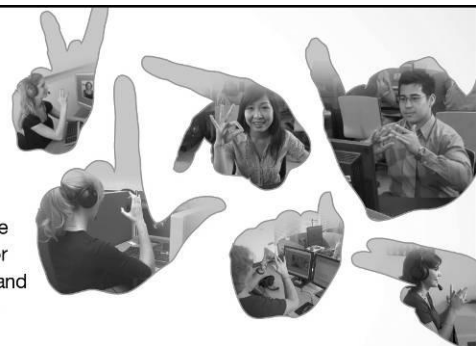
Digital tools for sign language studies.

Whether the focus is on basic communication in American Sign Language or advanced proficiency for career-path interpreter training, the Sony Virtuoso™ and Soloist® ASL digital language lab software suite can give your students the competitive edge. Capture high quality video and audio; simulate real-life interpreting situations for practicum skill development; create digital student portfolios; and easily save, review and assess student work digitally. Be progressive with our digital tools to positively impact your language program and student performance.

"The Sony software is a vehicle for instructors to use as an assessment tool in order to provide critical feedback to aid in the development of American Sign Language and interpreting skills."

Kathy Basilotto, CI, M.Ed.
Assistant Professor
Interpreter Training Program
Ocean County College, NJ

©2010 SANS Inc. Virtuoso and Soloist are trademarks of Sony Electronics Inc. SANS products incorporate SANS and Sony technology.



www.sansinc.com
Ask us for a demo at
sales@sansinc.com

SOLOIST®
Digital PC Compositive Recorder

VIRTUOSO™
Instructional Control Software

SANS Software
And
Network
Solutions

Exclusive Licensor of Sony
Language Learning Software



ASLTA

American Sign Language Teachers Association

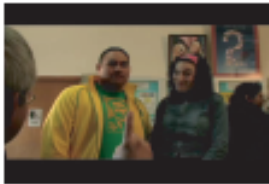
*Want to motivate your ASL students to follow Deaf cultural norms?
Need to make it less scary for your hearing students to attend Deaf events?
Looking for a ready-made curriculum to teach Deaf culture?*

*Get your FREE examination copy of the DVD/Workbook set
that is sweeping the nation as the #1 Deaf Culture Curriculum*

A Sign of Respect

Strategies for Effective Deaf/Hearing Interactions

by Thomas K. Holcomb and Anna Mindess



What should hearing people do if they don't understand what someone signed to them?



What is an appropriate "Deaf Hug"?



What is the polite way to join a group of signers?



Should hearing people alert Deaf people to noises?

This unique and effective DVD/workbook set follows a typical hearing student as she attends her first Deaf events and faces 18 culturally challenging situations. Viewers must pick from 3 possible solutions for each scenario. Then narrator, Tom Holcomb explains why the answer selected is correct or not. Try it for yourself now by viewing a scene at www.treehousevideo.com.

The DVD/workbook set contains an interactive DVD and a newly re-designed 92-page workbook* with everything you need:

- Readings
- Homework assignments
- In-class activities
- Journal questions

Get your FREE examination copy now!

*Try it out for 60 days. If your bookstore orders at least 10 copies,
you can keep your trial copy as our gift.*

For more information, visit **www.treehousevideo.com**

View Thomas Holcomb's answers to FAQs in ASL

Download our 5-page Instructor's Guide FREE now!

*NOTE: Workbook is provided on the DVD as a .pdf file



NCASLTA Conference

November 4-7, 2010
Hendersonville, NC

Aim High:
New Frontiers in Teaching ASL

Hosted by Blue Ridge Community College

www.ncaslta.org



Registration

Name: _____

Address: _____

Phone Number: _____ E-mail address: _____

Early Bird Registration until September 11, 2010

- NCASLTA Member \$60
- Nonmembers \$80

At the door

- NCASLTA Member \$90
- Nonmembers \$110

Registration until October 11, 2010

- NCASLTA Member \$70
- Nonmembers \$90

Send Payment to:

Robert Moore
PO Box 7312
Boiling Springs, NC 2801

Student Registration

- Student \$60 Banquet \$20



42 McMurray Road, Flat Rock, NC
828-693-9910

Mention NCASLTA for room rate of \$99



ASLTA

American Sign Language Teachers Association

The most user-friendly ASL curriculum just got even better!



Success is easy with the newly updated Bravo ASL! curriculum.

Use the colorful graphics on the NEW interactive slide presentation to effortlessly introduce vocabulary and grammar in a natural way...using ASL. The comprehensive Bravo ASL! Curriculum now gives you hours of digital media that supports you and your students' success!



HARRIS
COMMUNICATIONS

Exclusive Distributor of
Sign Enhancers Products

Order now for summer and fall classes! No. CURR-P(V4) ~~\$999.00~~ Sale! \$949.00

Go online: www.signenhancers.com or Call us: (800) 767-4461

Look for our booth at the CIT/ASLTA Conference in October!





ASLTA

American Sign Language Teachers Association



OHIO AMERICAN SIGN LANGUAGE TEACHERS ASSOCIATION
is proud to present their annual conference on

“American Sign Language Teaching
Methods of the 21st Century”

Friday, September 24, 2010 7pm-10pm

Saturday, September 25, 2010 8am-5pm

Wright State University
Creative Arts Building
3640 Colonel Glenn Highway
Dayton, Ohio 45436

Who should attend: OASLTA members, ASL teachers, Future interpreters, anyone interested.

Workshops will be presented in ASL Only!

Workshops TBA RID CEUs Pending

Questions? Contact Sharon Lane, OASLTA President, Sharon0248@aol.com

*****Send registration form &

payment to:

Judith Mair, OASLTA Committee
3098 Bennington Ave
Columbus, Ohio 43231

Name: _____

Address: _____ State: _____ Zip: _____

Phone: _____ Email Address: _____

OASLTA Member ___ non-member ___ Interpreter ___ ASL Student ___

Become an OASLTA member for only \$15.00 a year and save money! Attendance is free for quarterly workshops.

OASLTA members pay \$45.00 includes Continental Breakfast

Non-members pay \$65.00 includes Continental Breakfast

ASLTA and RID CEUs will be provided for workshops attended.

REGISTRATION DEADLINE: September 15, 2010



ASLTA

American Sign Language Teachers Association

A^{TO}Z

ABC STORIES IN ASL



Directed by:

BEN BAHAN

BEN JARASHOW

ABC Stories Performed by: Ben Bahan, Lindsay Darnall, Jr.,
Stefanie Ellis, Ben Jarashow, CJ Jones, and Brian J. Morrison

NOW AVAILABLE FROM
DAWNSIGNPRESS!

DELIGHTFUL ...

HUMOROUS ...

INSPIRING ...

ABSOLUTELY AMAZING!!!

26 **A to Z** stories told in ASL
PLUS 51 minutes of bonus features!

Visit us at www.dawnsign.com and
order your copy today!



**Spread
the
word!**

**Florida
ASLTA's**

**2011 Annual Conference
February 25, 26, 27, 2011
www.fasлта.org**

**Ramada Inn – Mandarin
Jacksonville, FL**

We've done more than 20 of these winter conferences over the past years (something nice about Florida in February!). We have great presenters, great accommodations, great food, and a great time – all for a small price. Check us out at www.fasлта.org!



ASLTA

American Sign Language Teachers Association



ASLTA Conference 2007 DVDs

***Missed out on some
of the workshops?
Get them on DVD!***

A lot happened at the ASLTA Conference and you can catch up on anything you missed with these high-quality DVDs of conference workshops and events. Share conference workshops with colleagues and students, or just review highlights at your leisure.

**Presented in
American Sign Language**

DVDs will be shipped in February 2008

ASL Poetry and Story Telling
About Teaching ASL
Conference Proceedings
Combo (All three DVDs)

1 disc
4 discs
24 discs
29 discs

\$29.95
\$99.95
\$146.95
\$234.85

Name _____

Address _____

City _____

State _____ Zip Code _____

Phone _____

Email _____

	Quantity	Price	Total Cost
ASL Poetry/Story Telling	_____ x	\$29.95	_____
About Teaching ASL	_____ x	\$99.95	_____
Conference Proceedings	_____ x	\$146.95	_____
Combo (All three DVDs)	_____	\$234.85	_____
Orders are non-refundable Portion of proceeds go to ASLTA			Total \$ _____

Payment Method

_____ check/money order

_____ Visa _____ Mastercard

_____ Discover _____ AMEX

Name of Cardholder _____

Credit Card # _____

Expiration Date _____

Signature _____

**Please mail
or fax order to:**
CSD-TV
102 N. Krohn Place
Sioux Falls, SD 57103
FAX: (605) 367-5958



www.csd.tv

For more information contact CSD-TV at 800-642-6410 (V) or 866-273-3323 (TTY)

CSD (also known as Communication Service for the Deaf, Inc.) is a private, nonprofit organization dedicated to providing broad-based services, ensuring public accessibility and increasing public awareness of issues affecting deaf and hard of hearing individuals. Through global leadership and a continuum of quality communication services and human service programs, CSD provides the tools conducive to a positive and fully integrated life. Please visit us online at www.c-s-d.org to learn more about what we can do for you.



CSD-TV has launched two compelling new programs created by and for the deaf and hard of hearing community.



FYE

FYE provides investigative reports, interviews, feature segments and profiles of deaf and hard of hearing people in the news. **Spice Up** takes you into the kitchen of noted deaf chef Jeff Perri as he shares the secrets to creating exciting cuisine. Watch a new episode every week online at www.csd.tv





ASLTA

American Sign Language Teachers Association

**ASL / Deaf Businesses show your support.
ASL Clubs advertise your wares!**

Advertising Donations

Full page = \$150

½ page = \$100

¼ page (this size) \$75

Deadlines for Articles & Advertisements

March 1st

June 1st

September 1st

December 1st

Looking for a way to generate new customers? Want to keep your products in front of your current clientele? Want to launch something new? Let ASLTA help you increase your sales.

Our quarterly newsletter is read by teachers of ASL from all around the nation in winter, spring, summer, and fall. Our readership consists of 300+ teachers who purchase your products and then pass your contact information on to their students who, in turn, also purchase your products. And, as we all know, word of mouth – or, in our case, sign of hand – advertising is the most effective!

Each issue of the ASLTA News consists of 12-20 pages that measure 8 ½" x 11" per page. The ASLTA News is mailed, first class, not bulk! This puts your company's name and information right in front of your customers!

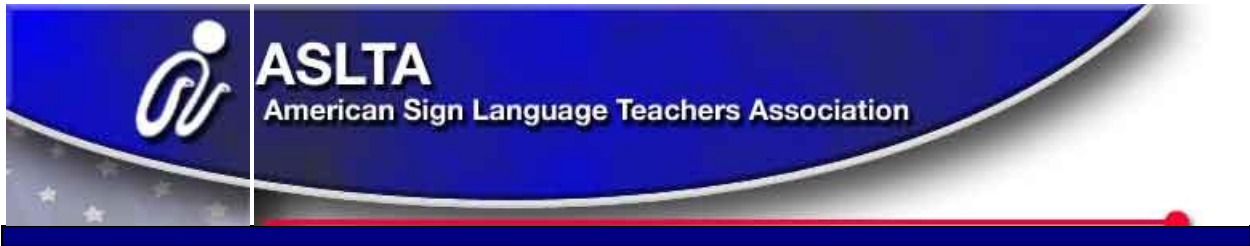
Send your camera-ready copy (tiff, jpg, Word document, or Adobe .pdf) to **Betti Bonni (ASLTA Treasurer)** via email: BBonni2@aol.com. Send payments to **Betti Bonni, ASLTA Treasurer, P.O. Box 20823, St. Petersburg, FL 33742.**

Advertisements

Donation	Size	Quarterly Deadlines	Annual Rates
\$150	Full Page (6.5"x9")	MAR 1 – JUN 1 – SEP 1 – DEC 1	5% discount **
\$100	½ Page (vertical: 3.25"x9" or horizontal: 6.5"x4.5")	MAR 1 – JUN 1 – SEP 1 – DEC 1	5% discount **
\$75	¼ Page (3.25"x4.5")	MAR 1 – JUN 1 – SEP 1 – DEC 1	5% discount **

* Thirty days prior to publication.

** Ads will be updated if received prior to normal advertising deadlines. If not, the last quarter's ad will be re-run.



American Sign Language Teachers Association



**WA ASLTA Chapter hosts 6th
National Professional Development Conference**

ASL NOW! Teaching to the Next Level

*Renaissance Seattle Hotel in Seattle, Washington
June 28 – July 3, 2011*

ASLTA Members, ASL-Deaf Studies Professors and Instructors, Program Directors, Linguists, Researchers, Interested Individuals, Sponsors, and Friends

Attention! Early Birds Combo available now! Save extra \$\$\$!

The Early Bird Combo is worth only \$350 per person! It is good until November 30, 2010.

The Combo will include:	• Conference registration	• Program book
• Reception	• Keynote speakers	• Booth exhibits
• ASLTA luncheon Thursday	• One breakfast Saturday	• Banquet dinner Saturday
• Unlimited participation in a variety of professional growth workshops		

The late combo will be worth \$400 per person from Dec. 1, 2010 to March 31, 2011.

The very late combo will be worth \$450 per person on and after April 1, 2011.

(Cut along the line)

Name _____ Date _____

Street Address _____

Town/City _____ State _____ Zip Code _____

Email address _____

Please make check or money order payable to: 2011 ASLTA Conference

Please mail the form with payment to:
Terry Sasser, Special Assistant
terrysasser@comcast.net
P.O. BOX 1572, Seattle, WA 98020-1572



ASLTA

American Sign Language Teachers Association



ASLTA
AMERICAN SIGN LANGUAGE TEACHERS ASSOCIATION

2010 ASLTA Membership
PO Box 20823
St. Petersburg, FL 33742

2010 Membership Application

To maintain valid certification [Provisional or Qualified or Professional], dues must be paid each and every calendar year

Dues cycle is based on annual calendar year. Payment is due in January.

PLEASE PRINT CLEARLY!

Member's Information:

Last: _____ First: _____

Address: _____

Main email: _____

Other contact info: _____

Institutional Affiliation: _____

Membership Categories: (select one)

Certified Membership (Voting) \$ _____ (\$50)

Circle one: Provisional _ Qualified _ Professional

Associate [Non-certified] Membership (Voting) \$ _____ (\$40)

(Non-certified ASLTA members, Aspiring Teachers, Mentors, Presenters)

ASL Honor Society Chapter Sponsor \$ _____ (\$35)

(for those teachers who are not certified but are sponsors of the ASLHS chapter in their school)

Supporting Membership (Non-Voting) \$ _____ (\$25)

(for general public –non-teachers - who would like to lend support to the efforts of the national organization)

Institutional Membership (Non-Voting) \$ _____ (\$150)

(for organizations, schools, publishers, etc.)

Donation: \$ _____

For office use only:
Thank you letter sent _____

TOTAL: \$ _____

For office use only:
____ Secretary
____ Treasurer
____ Member Coord
Date rec'd _____
Check nbr _____
Card sent _____

Important Privacy Notice:

ASLTA maintains a database of all membership information. This database is kept strictly confidential, with access only by members of the Board and the Membership Coordinator. However, when deemed appropriate by the Board, announcements or news may be sent via email to members on the list. If you wish to NOT receive any emails, Initial here: _____

ASLTA may set up a membership directory on our website. Members' names, state of residence, and certification level may be published. If you do NOT wish to have your information in the directory, Initial here: _____ Lack of initials implies consent.

American Sign Language Teachers Association
POB 92445, Rochester NY 14692-9998