



**2007 ASL Storytelling
Competition**

The American Sign Language Honor Society is pleased to announce the national 2007 ASL Storytelling competition. This annual competition is open to ASL students at the high school, community college, and university levels. Cash prizes will be awarded in each of the following categories: **ABC Story**, **Handshape Story**, and **Number Story**.

Winning stories will be posted on the ASLHS website for all to see. This competition is an ideal opportunity for students to demonstrate understanding of the different forms of ASL storytelling. Let's see what our students can do!

In order to submit a story for consideration, the student must attend a school with an active ASLHS chapter. New ASLHS chapter applications can be submitted with the ASL storytelling competition entry forms.

Submission deadline: **April 20, 2007**
Winners announced **May 15, 2007**

For entry forms, guidelines, and related information, please visit the ASLHS website at
<http://www.aslhonorsociety.org>.

<i>Inside This Issue!</i>	<i>Page</i>
ASL Honors Society	1
Prizes	1
Submission Deadlines	2
Reports: Board & Standing	3
Reports: Ad Hoc	5
Call for PDC Presentations	7
PDC Registration	10
Preview the Hotel	12
Fingerspelling	13
Announcements	14
Membership Form	15

***Check the website for current information between newsletters:
www.aslta.org***

***Prizes for ASL Honor
Storytelling Competition***

Prizes
Category: ABC Story
1st place: \$100.00
2nd place: \$50.00
3rd place: Honorable mention certificate

Category: Handshape Story
1st place: \$100.00
2nd place: \$50.00
3rd place: Honorable mention certificate

(Continued on page 14)

American Sign Language Teachers Association
POB 92445, Rochester, NY 14692-9998
Return mail to: 2074 Fairwood Dr #10, Taylorsville, UT 84118

ASLTA News is published four times a year:
January, April, July, October

ARTICLES WANTED:

Articles about teaching, learning, and/or research in the areas of 1st and 2nd language acquisition, Deaf culture, Deaf community, Deaf history, Deaf life, et cetera, are being sought. Please consider submitting something today. After all, this is your newsletter and it should reflect your needs, wants, and desires.

SUBMISSION DEADLINES

ARTICLES & DONATIONS FOR ADVERTISING:

March 1st (April)
June 1st (July)
September 1st (October)
December 1st (January)

\$150/full page

\$100/1/2 page

\$75/ 1/4 page

\$25/ directory listings

5% discounts apply if paid 1 year in advance.

Copy (advertising & articles) is accepted in the form of MS Publisher, MS Word, jpg, gifs, or Adobe Acrobat (PDF) files and should be sent as an email attachment directly to the newsletter editor:

arasmussen@valenciacc.edu
 Please cc to AlysseR@aol.com

DONATIONS should be sent to

ASLTA
P O Box 92445
Rochester, NY 14692-9998

ASLTA Membership Form is online at
<http://asltanet.org/membership/index.html>

2007 ASLTA Membership



2007 ASLTA Membership
 PO Box 92445
 Rochester, NY 14692-9998

Dues cycle is based on a calendar year -- January to December

Any questions, please email membership@asltanet.org

PLEASE PRINT CLEARLY!!!

Member's Information:

Name: _____

Address: _____

Main Email (REQUIRED): _____

Other Email: _____

Institutional Affiliation: _____

Membership Categories:

Certified Membership (Voting) \$ _____ (\$50)
 (Certified ASLTA members only! To maintain valid certification, dues must be paid each and every year)

Associate Membership (Voting) \$ _____ (\$40)
 (Non-certified ASLTA members, Aspiring Teachers, Mentors, Presenters)

Supporting Membership (Non-Voting) \$ _____ (\$25)

Institutional Membership (Non-Voting) \$ _____ (\$150)
 (Not for Individuals)

Donation: \$ _____

TOTAL: \$ _____

Payment Method:

Money Order or Check only. (Note: \$25 fee charged on all returned checks!)

Sorry we are not accepting credit or debit card payment at this time.

Thank you!!!

Job Announcements

Position Title	Name of College/ School District	Location	Application Deadline
ASL Assistant Professor	Gardner-Webb University	Boiling Springs, NC	screening begins Feb 15, 2007
ASL/ Deaf Studies Teacher	Pennsylvania School for the Deaf	Pennsylvania, PA	open until filled
Interpreter Educator	University of Arkansas at Little Rock	Little Rock, AK	begins February 1, 2007
Teacher ASL	New Caney Independent School District	New Caney, TX	none
ASL Specialist III	University of Louisville	Louisville, KY	immediately screen- ing until filled*
Deaf Studies Assistant Professor	Towson University	Towson, MD	December 15, 2007*

For more job announcements, go to: <http://asлта.org/job/index.html>

For workshop announcements, go to:
<http://asлта.org/workshops/index.html>

(Continued from page 1)

Category: Number Story

- 1st place: \$100.00
- 2nd place: \$50.00
- 3rd place: Honorable mention certificate

Criteria

All stories will be judged on the following criteria:

- 1) Clarity
- 2) Sign production
- 3) Originality & Story Parameters
- 4) Facial Expressions
- 5) Presentational Format

Please note:

All story submissions must be recorded onto a DVD.

VHS materials will not be accepted.

For entry forms, submission guidelines, and related information, please visit the ASLHS website:

Your ADVERTISEMENT Here!

Donations

- full page = \$150
- ½ page = \$100
- ¼ page (this size) \$75

ASL / Deaf Businesses show your support.

ASL Clubs advertise your wares!

Help ASLTA publish more articles by sponsoring our news with a donation for advertisement.

ASLTA, POB 92445, Rochester, NY 14692-9998. See page 6 for more details.

Reports: Officers & Committees

President: Glenna Ashton
Capricorns Rejoice!

2007 will be a busy year since we are looking forward to the 4th National Professional Development conference in Tampa, Florida on October 25 – 28, 2007. All the conference forms are online at www.asлта.org and we hope everyone will attend or even present there. The theme is “Making Connections – Research, Learn, Teach” with four tracks on researching, learning, teaching, and interpreting. There is a lower rate for members that keep their ASLTA membership current to 2007. CIT members have the opportunity to attend and present the same as ASLTA members. Start planning and saving for a great Floridian conference!

ASLTA, like other similar professional organizations such as CIT, RID, or CED, provide the opportunities for involvement, improvement, certification, and most of all, respect, and recognition of our field of teaching ASL. An excellent place to start is with your nearest chapter of ASLTA. Every member and officer should try to find creative ways to be active and responsive to the area’s needs and interests. What is happening with these areas of that chapter? Memberships, meetings, elections, committees, workshops, certifications, fundraising, advocacy, and reports are all areas that should be ongoing with active involvement of all

members, not just the officers. After all, everyone is busy working teaching ASL and Deaf Culture! Therefore, it takes a team effort to make things happen. If you want an ASLTA Board member to help jump start your chapter for 2007, invite one of us! However, travel expenses will have to be covered, since ASLTA must watch the bottom line on our budgeting. When there are strong active chapters, then they will make the national organization even stronger.

Here are two quotes I found interesting from other people’s notes.

“People who speak different languages live in different worlds, not the same world with different labels.” – Edward Sapir, American Linguist. Thus, you can see the important job we have in teaching ASL and Deaf Culture, and in bridging the worlds.

“It’s tough trying to keep your feet on the ground, your head above the clouds, your nose to the grindstone, your shoulders to the wheel, your finger on the pulse, and your eye on the ball.” – Angela Jones, RID president, used this quote to talk about the RID strategic plan but I thought, heck that is a teacher’s life! We all work hard because we want the best and try our best for the students and for ourselves.

Are you certified? Apply today!

(Continued on page 4)

(Continued from page 3)

Vice President: Tom Riggs

No report at this time.

Treasurer: Betti Bonni

No report at this time.

Secretary: Dorothy Wilkins

No report at this time.

Standing Committees

Evaluation Chair: Keith Cagle

The ASLTA Evaluation office has resumed fully in the first week of November after moved to the new house in Charlotte on Oct 27th. I was able to do some evaluation works during the period of temporary hold, because some of you sent the three copies of documentations and videotapes/

DVDs, then I sent them out to the evaluators immediately. Remember the new address for our ASLTA Evaluation office is **PO Box 39, Newell, NC 28126**

Some of you asked if you could send the DVDs, instead of VHS videotapes. Yes, if you can send the three DVDs, you can.

It is very important to keep your ASLTA membership in a good standing to keep your ASLTA certification valid. If you are not sure about your membership status, please contact Mark Jones, the coordinator of ASLTA membership at membership@aslta.org He is taking care of

(Continued on page 5)

REMINDER:

Renew ASLTA membership now.

Certification is a membership privilege.

**If you're not a member,
your certification is invalid.**

Fingerspelling ... Based on Linguistic Principles

by Alysse Rasmussen

I've watched students learn their alphabet and even had them practice signing visual rhyme words like "an, ban, can, dan, fan, ian, jan, man, nan, pan, ran, san, tan, van, etc. It's very helpful. But they still work twice as hard as they need to in order to avoid having to fingerspell.

Then I remembered an article that I read in one of the old roundtable journals back in the late seventies. This article talked about teaching reading skills, in this case fingerspelling skills, based on linguistic principles. It argued that people read clusters and shapes, not individual letters. It divided ASL letters into categories and talked about how much easier it was to see "letters that looked like they moved" than it was to see letter where only the "thumb position" alerted the signer to the differences.

It made sense to me, so now when I teach fingerspelling, I introduce my students to the basic handshapes and explain how to hold the hand, where to look, and how not to bounce. I let them practice their names.

But when I get ready to test their receptive skills, I highlight one group of letters, say the movement letters [Z I P J and Q]. Actually, I teach QU because very few words in English

have a Q without a U. There are, to the best of my knowledge, only 11 words in English that use those letters. We practice those words and when we're ready to assess, the students feel more confident because they know the quiz will only have words that use the letters Z I P Q U J.

The next time, I add full hand letters [B C W F].

After that I add the 1/2-hand letters, often in two groups [L V D] and [K R U X].

The spread-hand letters come next [G H Y].

The thumb-letters are last and usually grouped [M N T A] [S O] and [E].

The students feel more confident because they are focusing on adding just a few letters at a time. It also allows them to catch patterns of errors more quickly.

Once they have the basics down, I embed the fingerspelling in sentences. That sets them back a bit, especially if they've been staring at my hand instead of catching the flow of the letters with their peripheral vision. But after a few times, they learn to rely on the cues in the sentences.

Questions? AlysseR@aol.com

2007 ASLTA Professional Development Conference Renaissance Tampa Hotel International Plaza



Large, spacious, and well-lit, these conference rooms will host fantastic workshops designed and hand-picked to meet the professional needs of our ASLTA members.



When you're not in sessions, sit by the pool or lounge in the lobby, talking about all the great info you'll take home!



Curl up comfy in your room and talk the night away as you network with ASLTA friends from all around the nation!



(Continued from page 4)

sending you the annual stamp for your ASLTA certificates.

Have a great and productive year in 2007.

Professional Development Chair: Trix Bruce

Thank you all for spreading the announcements of workshops and jobs; please continue all the way. How exciting, we are now seeking Presenters for our National Conference this coming next year 2007. Please find this attached form and looking forward to work with you all.

Chapter Chair: Pat Beech

It is hard to believe that it is already January 2007. Where has time gone?

We have a new chapter - Georgia ASLTA. Congratulations! The URL is GeorgiaASLTA.org. The current officers are: Secretary - Julia King, Treasurer - Rose Crews, and PDC - Kelly Kim. The President and Vice-president positions are vacant. If anyone is interested, please let the officers know.

Current members of Dogwood ASLTA (representing southeast part of Virginia) wants the chapter active again. We will set up a meeting soon to discuss how they can attract new members, etc.

Pennsylvania ASLTA will have its biennial conference titled "ASL: A Revolutionary Language!" It will be

held on May 4-5, 2007 at the Community College of Allegheny County (CCAC-North campus) in Pittsburgh, Pa. At this conference, there will be an election of officers for 2006-2008.

West Virginia is interested in becoming a chapter.

I would like all chapters to continue sending their workshop announcements and attendance information to Trix Bruce, PDC. She will be tracking your chapter's workshop hours (minimum of 12 per year). Her e-mail address is pdchair@aslta.org.

Whenever there is an election of new officers, change in officers, etc., please do inform chapter@aslta.org and webmaster@aslta.org so updates can be made to the ASLTA website. If you know of an interested group of teachers, individuals, etc., that would like to set up a chapter, please ask them to contact chapter@aslta.org for an application packet.

Ad Hoc Committees

ASL Honors Society Report: Jason Zinza

See front cover.

ASLPI Report: Eddy Laird

No report at this time.

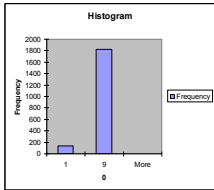
ASL-RIH Report: Alysse Rasmusen

ASL-Recognition in Higher Education Committee emailed 1961 sur-

(Continued on page 6)

(Continued from page 5)

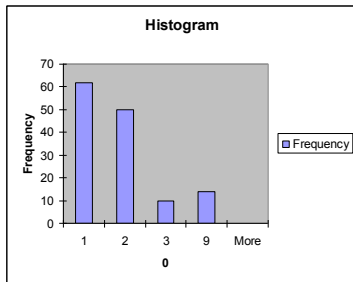
veys to 4-year colleges and universities in the United States. To date we have received 137 replies (7% response).



Currently we are investigating other ways of collecting the data in order to ensure a higher rate of return.

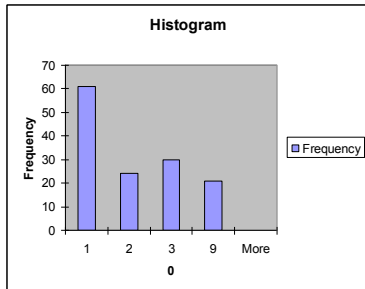
Written Policy:

Yes: 66 (46%) No: 50 (34%)
 Don't Know: 10 (8%) 0Response: 14 (10%)



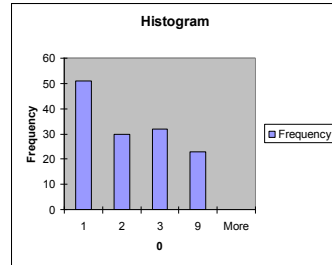
Accept Less Commonly Taught Languages

Yes: 62 (45%) No: 24 (18%)
 Don't Know: 30 (22%) 0Response: 21 (15%)



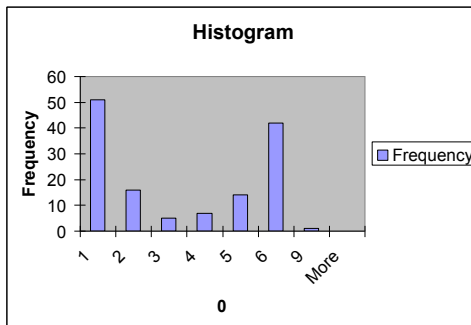
Accepts Indigenous Languages

Yes: 52 (38%) No: 30 (21%)
 Don't Know: 32 (23%) 0Response: 23 (17%)



Accept ASL

Not Applicable: N/A 42 (31%)
 Yes: Entrance & Exit: 52 (38%)
 Sort of:
 Entrance, Not Exit: 16 (12%)
 Graduation 5 (4%)
 Conditional 7 (5%)
 No: No 14 (10%)
 No Response 1 (1%)



Once the results are in, the information will be compiled and made available to our members and the public. Based on the responses, additional materials, supporting ASL in Higher Education, will be developed.

PAYMENT INFORMATION

TOTAL PAYMENT: \$ _____

Check # _____ (make checks payable to ASLTA)
 Money order # _____ (payable to ASLTA)

Sorry no credit charges accepted

Mail this form to:
 Dorothy M. Wilkins
 ASLTA Registration
 P.O. Box 92445
 Rochester, New York 14692-9998

contact information:
 Dorothy M. Wilkins
 secretary@aslt.org

HOTEL INFORMATION

Renaissance Tampa Hotel (Marriott)
 International Plaza
 4200 Jim Walter Blvd.
 Tampa, Florida 33607
 (800) 468-3571 / (813) 877-9200
 www.RenaissanceTampa.com

Room rate: \$139.00 per night for single/double and \$159.00 per night for triple/quad. Be sure to provide the ASLTA group reservation code when you register to get the discount rate. The code is aslasla.

To guarantee your room at the Renaissance Tampa Hotel, make your reservation soon! The cutoff date is September 25, 2007. Register online at www.RenaissanceTampa.com or call (800) 468-3571 or (813) 877-9200.





American Sign Language Teachers Association
4th National Professional Development Conference
Making Connections – Research, Learn, Teach
October 25 – 28, 2007 - Tampa, Florida

REGISTRANT INFORMATION

Mr. Mrs. Ms. Dr. _____
Name for Badge _____ E-Mail _____
Affiliation _____
Address _____
City, State, Zip _____
Home Phone _____ VP/TTY/V Work Phone _____ VP/TTY/V _____
Emergency Contact Name _____ Phone Number _____
All workshops will be presented in ASL only. If you require an interpreter for special needs (close-vision, deaf-blind), please indicate: (all requests must be made by Aug 25, 2007)

REGISTRATION FEE

Includes reception, continental breakfasts, buffet lunch, snack breaks, and banquet

	Early	Regular	Late/On-Site
Registration forms & payment must be postmarked by	6/25/07	9/25/07	9/26/07
ASLTA or CIT member (copy of 2007 membership card)	\$275	\$350	\$400
Non-member (add \$50.00)	\$325	\$400	\$450

(Join or renew with membership form!)

IMPORTANT INFORMATION – read carefully before registering

Member rate: in order to receive member rates for the conference, you must be a current ASLTA or CIT member. Membership applications can be obtained from our Web site (www.aslta.org).

Cancellation policy: All cancellations must be in writing. Registrations may not be transferred.

Cancellation Postmarked	Refund Amount
By 6/25/07	75%
By 9/25/07	50%
After 9/26/07	0%

Confirmation letters will be e-mailed or mailed within four weeks of receipt of registration. Please contact Dorothy M. Wilkins at secretary@aslta.org if you have not received confirmation within four weeks of mailing your registration. Unconfirmed registrations cannot be guaranteed.

Purchase Orders will be accepted for the conference. Payment terms are 30 days from receipt of invoice. If payment is not received by 9/25/07, you will be billed at the on-site registration rate (see registration section).

I have read and understand the information above: _____
Signature _____ Date _____



2007 ASLTA CONFERENCE

American Sign Language Teachers Association
4th National Professional Development Conference
Making Connections – Research, Learn, Teach
October 25 – 28, 2007 - Tampa, Florida
Renaissance Tampa Hotel (Marriott) International Plaza
4200 Jim Walter Blvd, Tampa, Florida 33607
www.RenaissanceTampa.com (hotel code: aslasla)

CALL FOR PRESENTERS

The 2007 American Sign Language Teachers Association, 4th National Professional Development Conference is seeking highly motivated presenters who specialize in the field of ASL research, learning or/and teaching. We would like to invite you to present and submit a presentation proposal. The mission of the conference is to demonstrate and connect research, learning, and teaching strategies offered by ASL presenters from K-12 schools, colleges, community programs, and interpreter training programs. The conference also promotes an excellent opportunity to enhance professional networking and personal growth/renewal.

TYPES OF PRESENTATIONS:

ASLTA hopes to have creative, fascinating, and dynamic presentations. We ask you to be creative in designing and preparing your presentation to be interactive, so that will enhance participants' teaching skills and strategies. Presentation topics must be in one or more of those conference themes: Research, Learn, or/and Teach. The length of presentation can be either 1.5 or 3.0 hours long. Presenters should include the following activities:

- To provide hands-on examples and tools
- To share results, pitfalls, successes, and lessons learned about your teaching
- To facilitate an interactive discussion about a hot issue, opportunity, or research

PRESENTER DISCOUNTS & BENEFITS:

- ASLTA offers a special lower registration rate available \$250 only for the accepted presenters. If there are co-presenters, the main presenter gets the special rate.
- A Certificate of Workshop Presentation

APPLICATION PROCESS:

The 2007 ASLTA conference is accepting presentation proposals. If you are interested, please kindly fill out the presentation proposal form. Proposals will be evaluated by the ASLTA screening group. Applicants will be notified whether they are selected or not.

DEADLINE FOR SUBMISSION – MARCH 25, 2007

Send presentation proposal form with supporting materials via email to Patricia Bruce at pdchair@aslta.org



2007 ASLTA CONFERENCE

American Sign Language Teachers Association
 4th National Professional Development Conference
 Making Connections - Research, Learn, Teach
 October 25 - 28, 2007 - Tampa, Florida

PRESENTATION PROPOSAL FORM

Name of Main Presenter(s): _____

Names of Co-Presenters: _____

Mailing Address: _____

City: _____ State: _____ Zip: _____

Phone VP/TTY/V: _____ Fax: _____

E-mail: _____ Pager/Text: _____

ASLTA Certified: Professional Qualified Provisional None

BIO: (100 words or less)

TITLE OF PRESENTATION:

WORKSHOP DESCRIPTION: (200 words or less)

TARGET AUDIENCES: Research Learning Teaching Interpreting
 MEDIA NEEDS: Overhead TV/VCR Own Equipment (Laptop, LCD Projector, other)

SPECIAL NOTE: All presentations of any type to be in ASL only with no interpreters provided

DEADLINE FOR SUBMISSION - MARCH 25, 2007

Send presentation proposal form with supporting materials via email to Patricia Bruce at pdchair@aslta.org